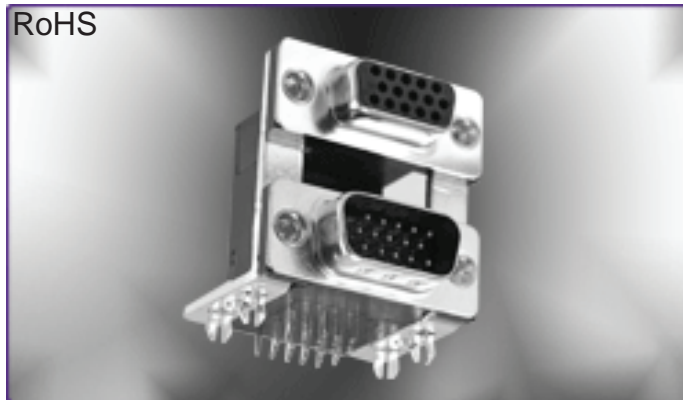
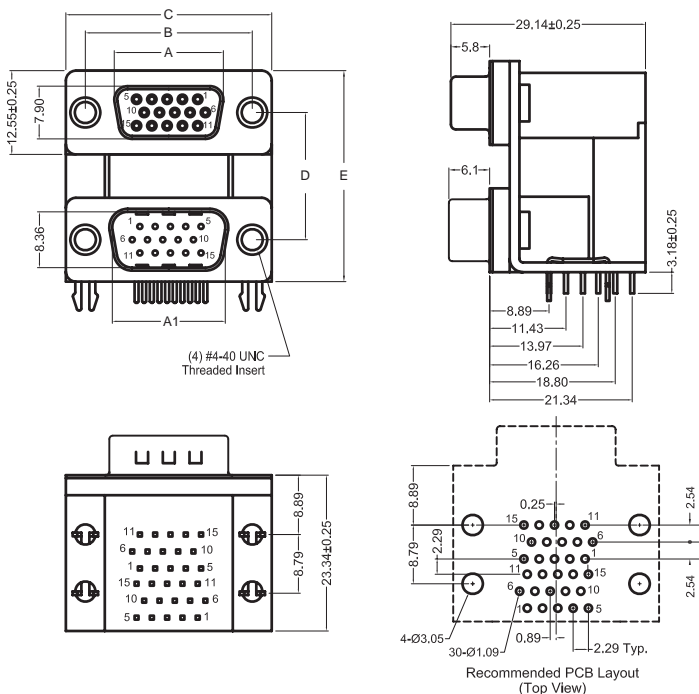


RoHS



## K42X Series High Density Dual-Port D-Sub

Dimensions in mm



Number of Contacts (Shell Size)	Dimensions (Inch/ mm)			
	A	A1	B	C
9 (E)	.643	.666	.984	1.213
	16.33	16.92	24.99	30.81
15 (A)	.971	.994	1.312	1.541
	24.66	25.25	33.32	39.14
25 (B)	1.511	1.534	1.852	2.088
	38.38	38.96	47.04	53.04
37 (C)	2.159	2.181	2.500	2.729
	54.84	55.42	63.50	69.32

Center to Center Spacing	D	E
A	.750 19.05	1.244 31.60
B	.900 22.86	1.394 35.41
C	.625 15.88	1.119 28.42

A = Exterior of Female Shell (S)      A1 = Interior of Male Shell (P)

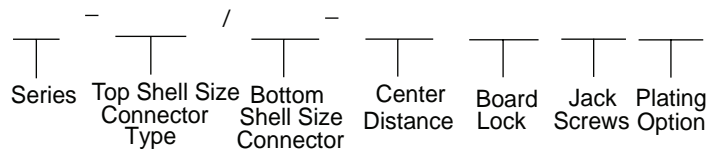
## STACKED D-SUBMINIATURE

### K42X Series

#### Documentation & Ordering Information


Kycon Part #	
--------------	--

#### Part Builder



#### Series

K42X - High Density Dual-Port D-Subminiature Connector

#### Top/Bottom Shell Size

- A26S/S - 26 Contacts, Receptacle over Receptacle
- B44S/S - 44 Contacts, Receptacle over Receptacle
- E15S/P - 15 Contacts, Receptacle over Plug
- E15S/S - 15 Contacts, Receptacle over Receptacle
- E15SV/SV - 15 Contacts, VESA, Receptacle over Receptacle

#### Center to Center Distance

A - .750" (Standard)

#### Board Locks Option

4N - Board Locks (Standard)

#### Jack Screws Option

- Blank - No Jack Screws
- J - 4-40 HEX Removable Jack Screws
- R - 4-40 Round Riveted Jack Screws

#### Plating Option

- Blank - Gold Flash
- 15 - 15µ" Gold
- 30 - 30µ" Gold

Contact Kycon for High Temperature and Other Options