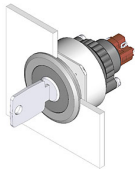


# EAO – Your Expert Partner for Human Machine Interfaces

## K14-135.22200 - Keylock switch

### K14-135.22200 - Keylock switch



*Attention: The preview is based on a sample product. This can differ from your current configuration.*

#### Mounting

Design	flush
Mounting cut-out	Ø 30,5 mm

#### Front

Front dimension	Ø 35 mm
Front shape	round

#### Other Attributes

Weight	0,044 kg
--------	----------

#### Operating-/Indication part

Switching angle	90° right
-----------------	-----------

#### IP-Rating

Front protection	IP65
------------------	------

#### Connection Method

Terminal	Soldering terminal
----------	--------------------

#### Actuator

Switching action	Rest(a) - Maintain(a)
------------------	-----------------------

#### Switching element

Rotary positions	2
Switching system	Snap-action switching element
Contacts	1 NC + 1 NO
Switching current	5 A
Contact material	
Switching voltage	250 V AC

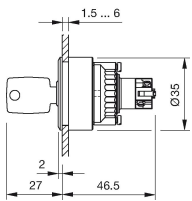
#### Function

Keylock switch	
----------------	--

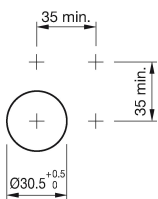
# EAO – Your Expert Partner for Human Machine Interfaces

K14-135.22200 - Keylock switch

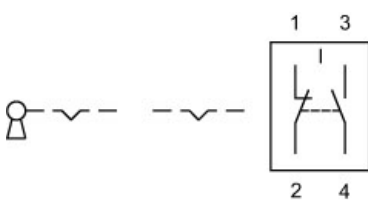
## Dimensions



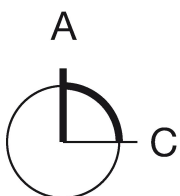
## Mounting cut-outs



## Wiring diagram



## Switching positions



## Additional information

Lock numbers 1001, lock type KABA  
Two keys are supplied with each keylock switch.  
Optional lock numbers on request

## Legend

Contacts: NC = Normally closed, NO = Normally open