

# IT 40 series

## Mains pushbutton switches - 6000V dielectric strength

*Distinctive features and specifications*

- Mains pushbutton switches for PC boards
- Highest dielectric 6 KV
- Latchdown mechanism

B

### ELECTRICAL SPECIFICATIONS

- Max. current/voltage rating with resistive load : see table below
- Insulation resistance : 10.000 M $\Omega$  min. at 500VDC
- Dielectric strength : 6.000 Vrms 50 Hz min.  
(other components to be kept outside protection area A to preserve 6KV on PCB - see drawing on next page)
- Electrical life at full load : 20.000 cycles

CURRENT/VOLTAGE RATINGS	
Certified ratings	Inrush current
IEC 65 NFC 92130 (L.C.I.E. certificate)	according to UL1054
1,5/56A 250VAC 20.000 cycles	TV3 250VAC 25.000 cycles

### MATERIALS

- Case and cover : polyester  
UL VO
- Plunger : polyamide 6-6
- Contacts : silver/nickel alloy  
(Ag/Ni)
- Other molded parts in  
UL approved materials

### GENERAL SPECIFICATIONS

- Mechanical life : 50.000 cycles min.
- Operating temperature : -10°C to +85°C
- Storage temperature : -30°C to +85°C
- Total travel : 8 mm (.314)

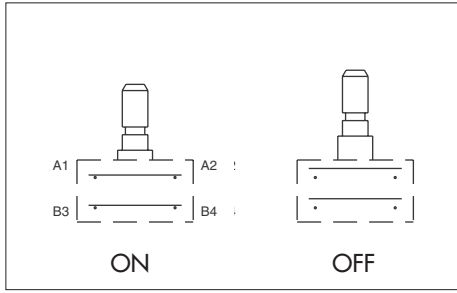
**Dimensions** : first dimensions are in mm while inches are shown as bracketted numbers.



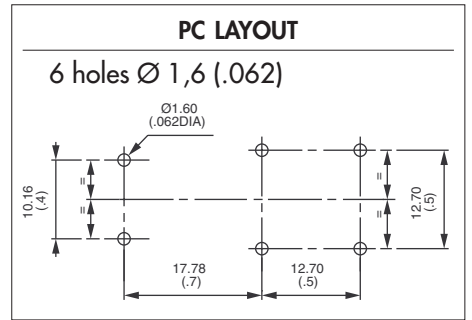
**Packaging unit** : 40 pieces

# IT 40 series

Mains pushbutton switches - 6000V dielectric strength



- Double pole configurations

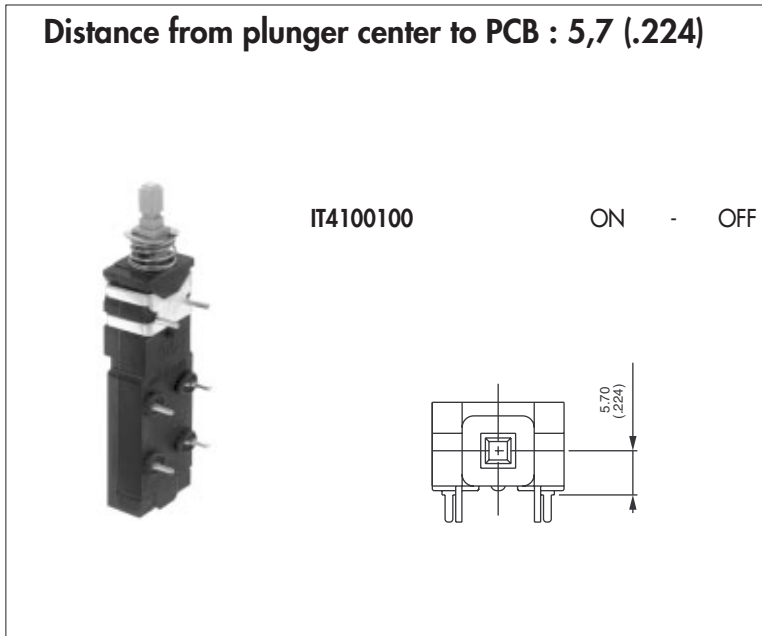


MODEL  
STRUCTURE

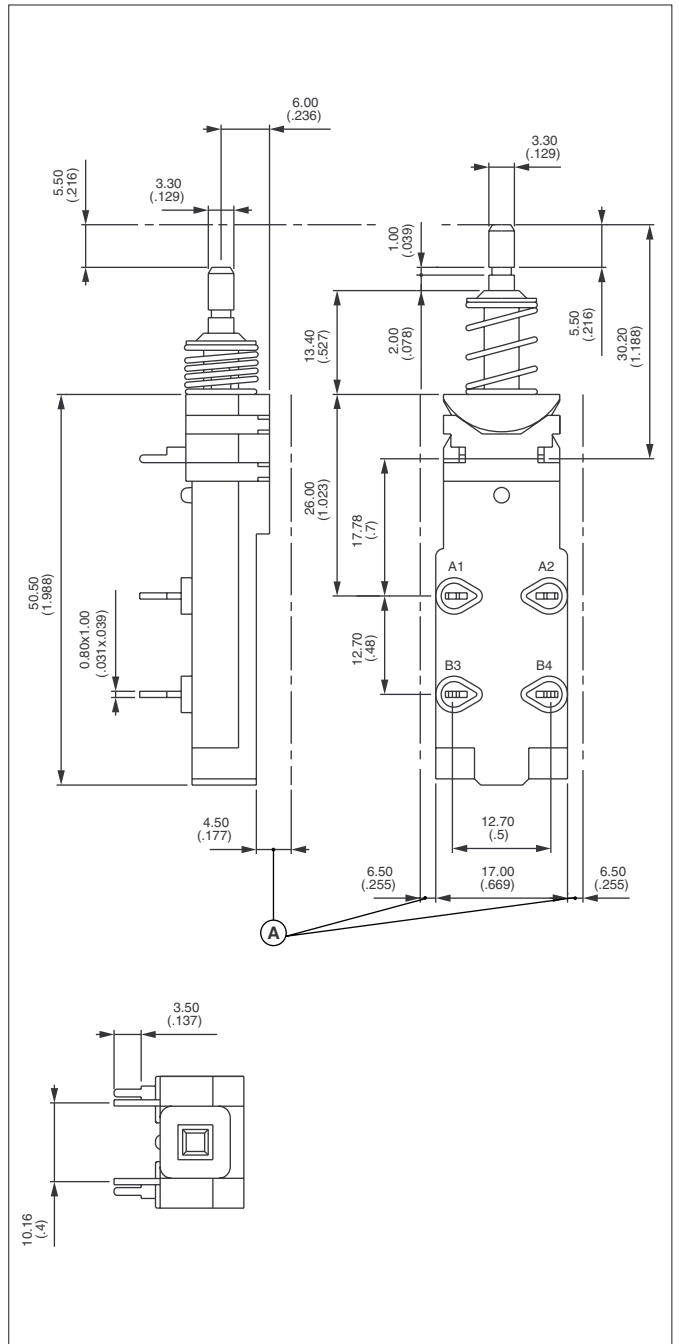
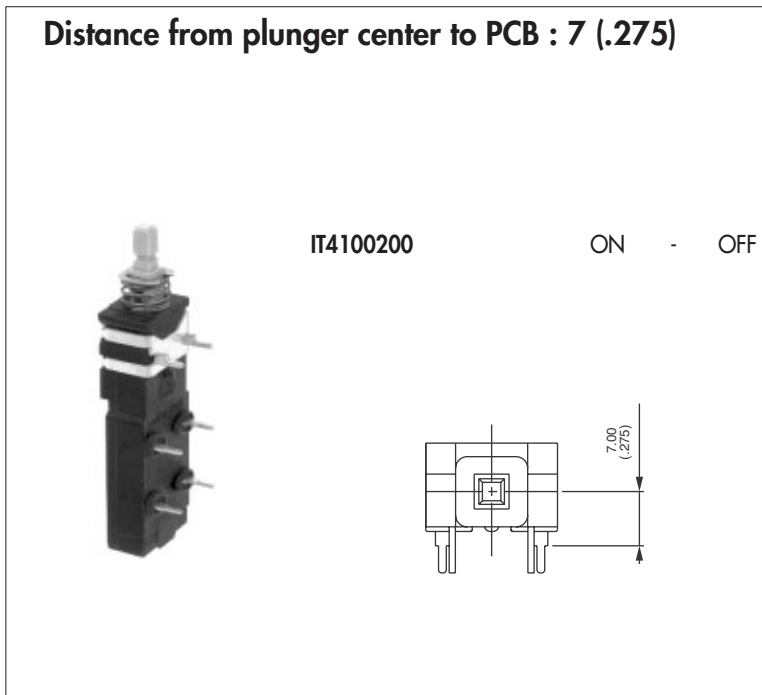


B

Distance from plunger center to PCB : 5,7 (.224)



Distance from plunger center to PCB : 7 (.275)



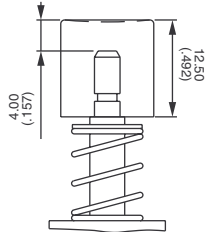
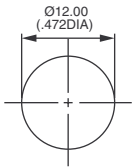
# IT 40 series

Mains pushbutton switches - 6000V dielectric strength

OPTIONS

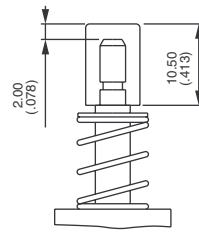
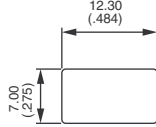


## CAPS



**U1670**

Round cap



**U1680**

Rectangular cap

### Cap colours

Replace "0" by number

- |     |        |
|-----|--------|
| 1   | blue   |
| 2   | black  |
| 3   | green  |
| 4   | grey   |
| 5   | yellow |
| 6   | red    |
| 7/1 | white  |
| 9   | orange |

B