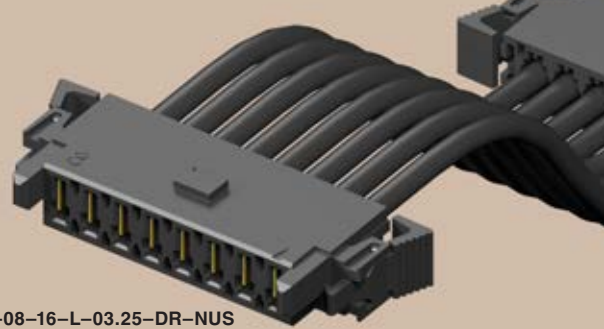
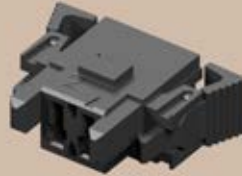


(5,00 mm) .1969"

MPSS, IMS5, CC46 SERIES

IMS5-02-02



MPSS-08-16-L-03.25-DR-NUS

MINI POWER CABLE ASSEMBLY

Mates with:
MPT

SPECIFICATIONS

For complete specifications see www.samtec.com?MPSS

Insulator Material:
Nylon 6/6

Contact Material:
Copper Alloy

Plating:
Au or Sn over

50µ" (1,27 µm) Ni

Latch:
Nylon 6/6

Operating Temp Range:
-35°C to +105°C

Voltage Rating:
600 VAC/848 VDC

Wire:
14 or 16 AWG

RoHS Compliant:
Yes



CURRENT RATING (PER CONTACT)	
AMBIENT TEMP	MPSS/MPT
20°C	20.4A
40°C	17.8A
60°C	14.6A
75°C	11.7A
8 POSITIONS (1x8) 16 AWG POWERED	

MPSS	NO. OF POSITIONS	WIRE GAUGE	PLATING OPTION	ASSEMBLED LENGTH	END 1 OPTION	END 2 OPTION
	-02, -03, -04, -06, -08	-14 -16	-L = 10µ" (0,25 µm) Gold on contact -T = Matte Tin	- "XX.XX" = Wire Length in Inches (83,00 mm) 03.25" min.	-SR = Single End -DR = Double End	(Available with -DR only) -NUS = Notch up, straight -NDS = Notch down, straight

NO. OF POSITIONS	A
-02	(30,07) 1.184
-03	(35,07) 1.381
-04	(40,08) 1.578
-06	(50,09) 1.972
-08	(60,10) 2.366



HAND TOOL
CAT-HT-246-1416-11
Contact Samtec

MINI APPLICATOR
CAT-MA-246-1416-XX-02
Contact Samtec

TYPE	NO. OF POSITIONS	02	TYPE	1416	01	PLATING OPTION
IMS5 = Body, Loose	-02, -03, -04, -06, -08	-02 = Plastic Latch	CC46L = Contact, Loose CC46R = Contact, Full Reel	-1416 = 14 to 16 AWG		-L = 10µ" (0,25 µm) Gold on contact -T = Matte Tin

Note: Some lengths, styles and options are non-standard, non-returnable.

Due to technical progress, all designs, specifications and components are subject to change without notice.

WWW.SAMTEC.COM