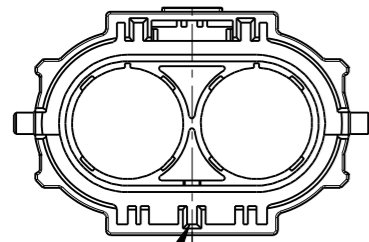


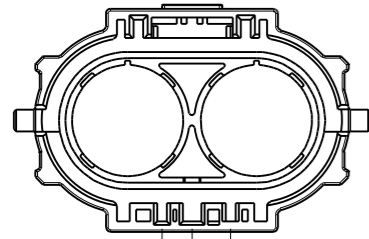
REV	ECN	DESCRIPTION	DATE	MODIFIED
1		PRE-RELEASE	15/08/13	Eric
2			09/09/14	Eric
3		ADD WIRE DIAMETER	15/09/15	Robin Yuan

SCALE 3:5

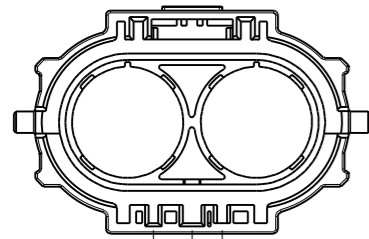
CUSTOMER DRAWING



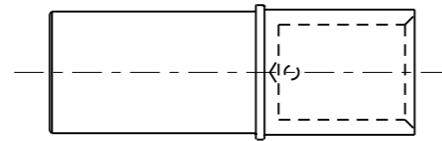
KEYWAY
HVSL 1000 06 2 A
CODING A



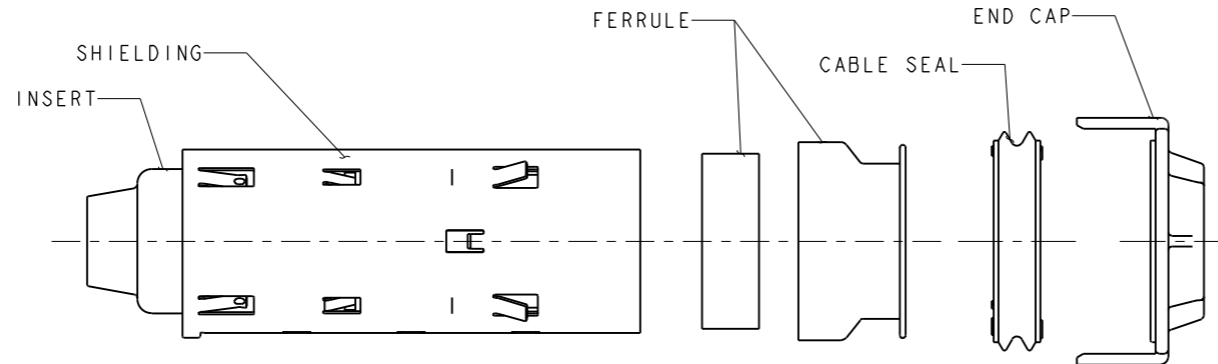
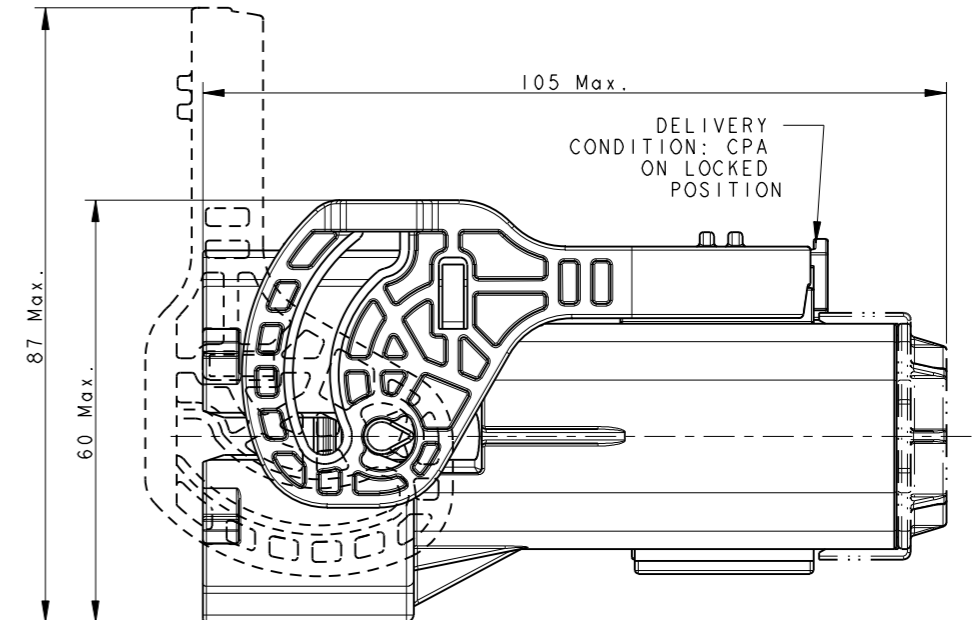
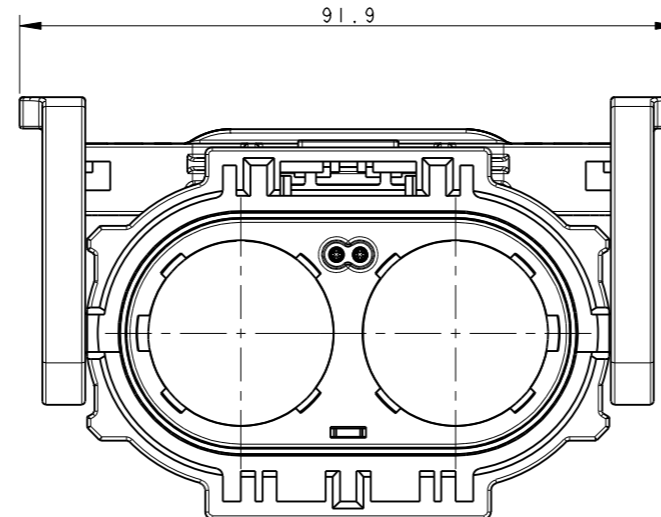
7 9
HVSL 1000 06 2 B
CODING B



9 7
HVSL 1000 06 2 C
CODING C



SOCKET CONTACT
P/N: C4200036161 --70 mm² WIRE
C4200036162 --50 mm² WIRE
C4200036163 --35 mm² WIRE
C4200036164 --25 mm² WIRE



KIT OF SOCKET INSERT
P/N: C4220036011 --70 mm² WIRE OD=19.0 ± 0.7MM
C4220036012 --50 mm² WIRE OD=16.5 ± 0.4MM
C4220036013 --35 mm² WIRE OD=14.2 ± 0.4MM
C4220036014 --25 mm² WIRE OD=11.9 ± 0.3MM

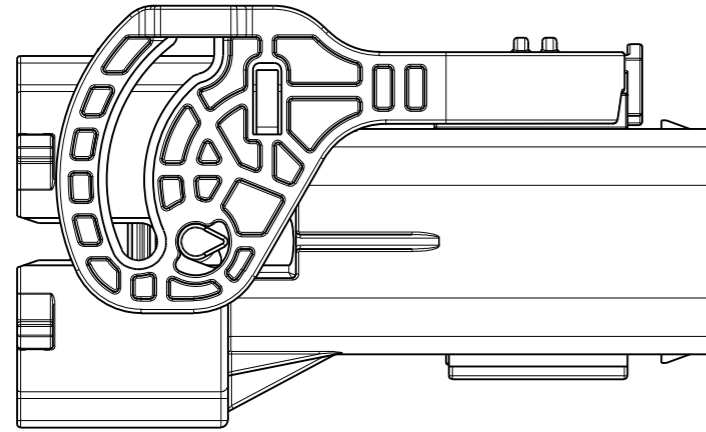
NOTES:

- MATERIAL & FINISH:
PLASTIC BODY: THERMOPLASTICS UL 94V-0 ORANGE COLOR
SOCKET CONTACT: COPPER ALLOY SILVER PLATED
SHIELDING: COPPER ALLOY TIN PLATED
FERRULE: STAINLESS STEEL
CABLE SEAL: SILICONE RUBBER
- ELECTRONICAL CHARACTERISTICS:
HIGH VOLTAGE RATED 1000 V DC MAX.
CURRENT RATED 250 A MAX.
WITHSTANDING VOLTAGE 3000 V AC
PRODUCTS ARE COMPLIANCE WITH EN 60664-1 POLLUTION II
- ENVIRONMENT CHARACTERISTICS:
IP67 IP6K9K RATED (WHEN MATING)
IP2XB RATED FOR FINGER TOUCH-PROOF
- DELIVERY WITHOUT CONTACTS. THE CONTACTS SHOULD BE ORDERED SEPARATELY.
- SEE APCD-TD-073 FOR ASSEMBLY INSTRUCTION.

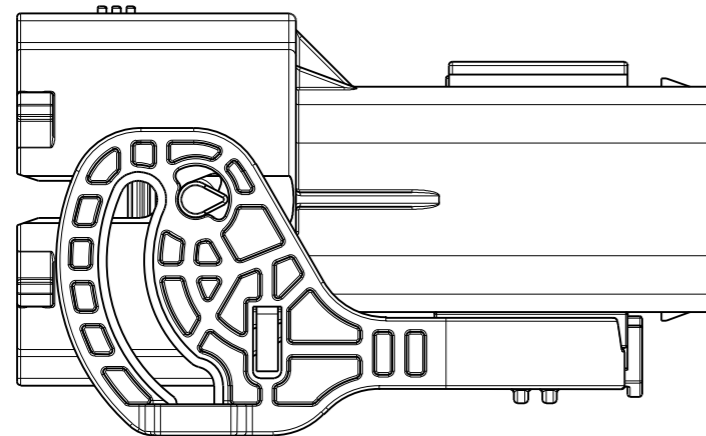
C-HVSL1000062X

C-HVSL1000062X

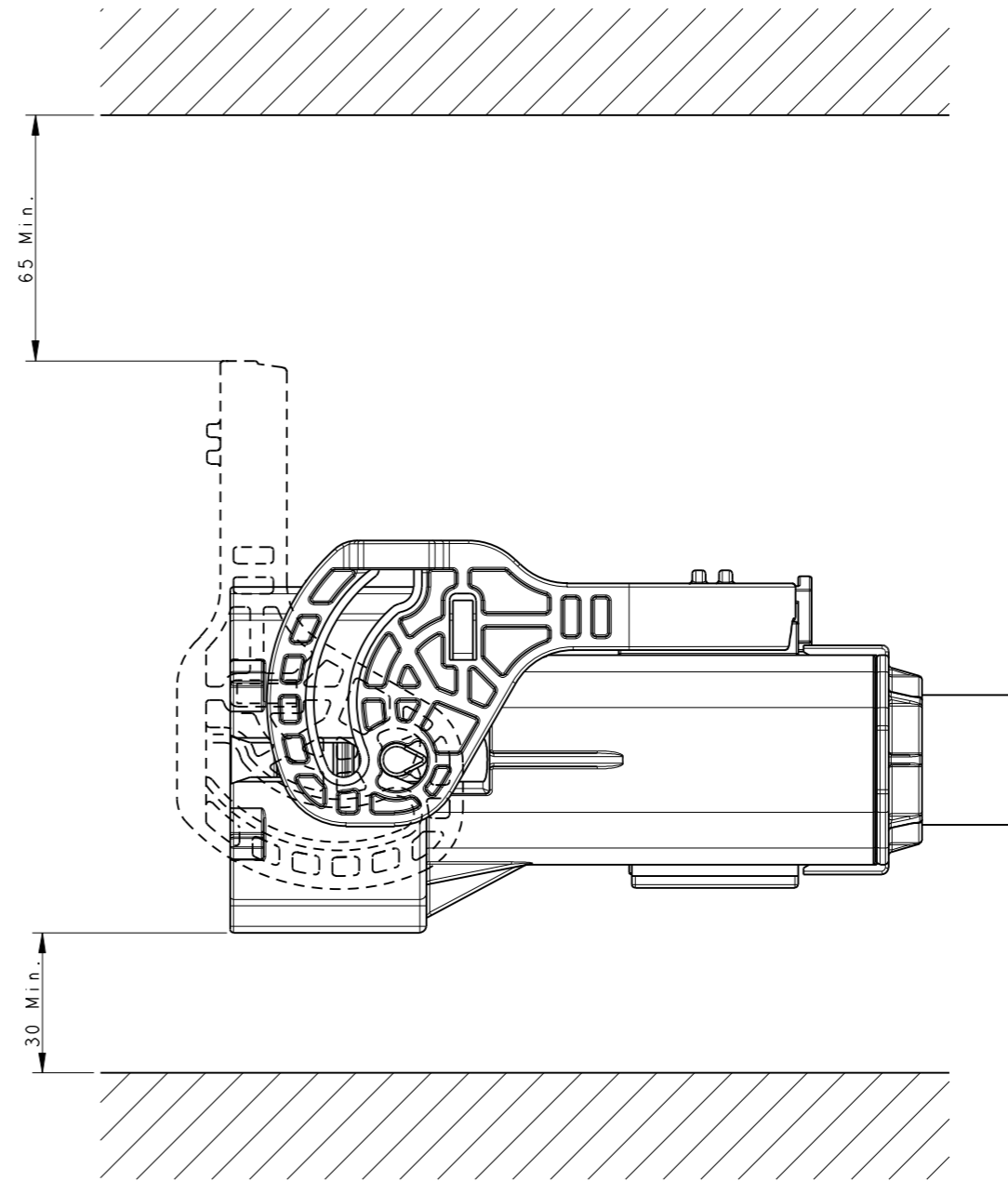
DIMENSIONS ANSI Y14.5M UNITS: MM Pro/E FILE	TOLERANCES .X ±0.3 .XX ±0.10 ANGLES ±0.5°	PROJECTION 	TITLE Amphenol Pcd Shenzhen ENGR Robin Yuan 15/09/15		
			HVSL 1000 06 2 X STRAIGHT PLUG ASSEMBLY		
ORIGINAL NOT FOR CUSTOMER DISTRIBUTION	THIS DOCUMENT CONTAINS PROPRIETARY INFORMATION WHICH IS THE CONFIDENTIAL PROPERTY OF AMPHENOL PCD SHENZHEN		SIZE A3	DWG NO. C-HVSL1000062X	REV 3
			CODE: 58982	SCALE: 1:1	SHEET 1 OF 2



HVSL 1000 06 2 X



HVSL 1000 06 2 X RL
(REVERSE LEVER)



INSTALLATION CLEARANCE
ACC. TO USCAR 25

SIZE	DWG NO.	REV
A3	C-HVSL1000062X	3
CODE: 58982	SCALE: 1:1	SHEET 2 OF 2