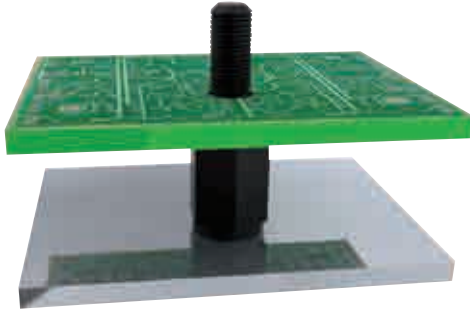


THREADED AND NON-THREADED SPACERS

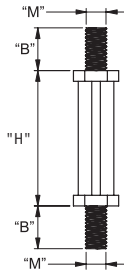
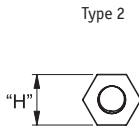
Hex Threaded Standoff

HTSN-2\HNSM-2\HTSN-3

Black, Nylon 6/6, RMS-172



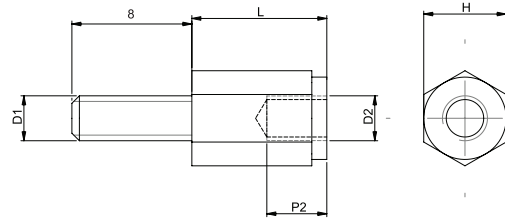
Can't find the size you are looking for? Contact us!



Type 2 Male/Male

Part Number	Thread "M"	Dimensions (mm)			Std Pack Qty
		"L"	"H"	"B"	
HTSN-M2.5-5-3	M2.5	5	5	6	500
HTSN-M2.5-10-3	M2.5	10	5	6	500
HTSN-M2.5-12-3	M2.5	12	5	6	500
HTSN-M2.5-15-3	M2.5	15	5	6	500
HTSN-M2.5-18-3	M2.5	18	5	6	500
HTSN-M2.5-20-3	M2.5	20	5	6	500
HTSN-M2.5-25-3	M2.5	25	5	6	500
HTSN-M3-5-3	M3	5	6	6	500
HTSN-M3-8-3	M3	8	6	6	500
HTSN-M3-10-3	M3	10	6	6	500
HTSN-M3-12-3	M3	12	6	6	500
HTSN-M3-15-3	M3	15	6	6	500
HTSN-M3-18-3	M3	18	6	6	500
HTSN-M3-20-3	M3	20	6	6	500
HTSN-M3-25-3	M3	25	6	6	500
HTSN-M3-30-3	M3	30	6	6	500
HTSN-M3-35-3	M3	35	6	6	500
HTSN-M4-5-3	M4	5	6	6.4	500
HTSN-M4-8-3	M4	8	6	6.4	500
HTSN-M4-12-3	M4	12	6	6.4	500
HTSN-M4-15-3	M4	15	6	6.4	500
HTSN-M4-18-3	M4	18	6	6.4	500
HTSN-M4-20-3	M4	20	6	6.4	500
HTSN-M4-25-3	M4	25	6	6.4	500
HTSN-M4-30-3	M4	30	6	6.4	500
HTSN-M4-35-3	M4	35	6	6.4	500
HTSN-M4-40-3	M4	40	6	6.4	500

Type 1



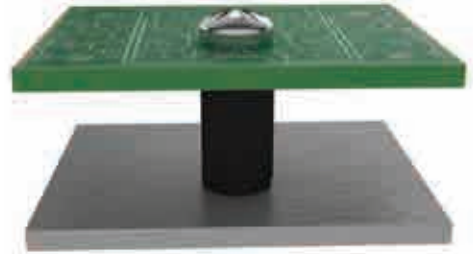
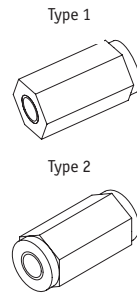
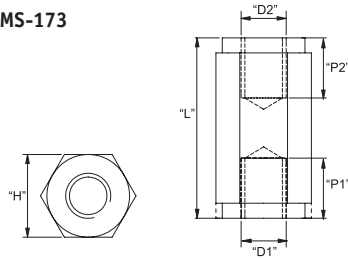
Type 1 Female/Male

Part Number	Thread "D1 & D2"	Dimensions (mm)			Std Pack Qty
		"L"	"H"	"P2"	
HNSM2.5-5-5-2	M2.5	5	5	3	500
1317188	M2.5	8	5	5	500
HNSM2.5-10-5-2	M2.5	10	5	8	500
HNSM2.5-12-5-2	M2.5	12	5	9	500
HNSM2.5-15-5-2	M2.5	15	5	10	500
HNSM2.5-18-5-2	M2.5	18	5	10	500
HNSM2.5-20-5-2	M2.5	20	5	10	500
HNSM2.5-25-5-2	M2.5	25	5	10	500
HTSN-M3-5-5-5-2	M3	5	5.5	3	500
HTSN-M3-8-5-5-2	M3	8	5.5	5	500
HNSM3-10-5-5-2	M3	10	5.5	8	500
HNSM3-12-5-5-2	M3	12	5.5	9	500
HNSM3-15-5-5-2	M3	15	5.5	10	500
HNSM3-18-5-5-2	M3	18	5.5	10	500
HNSM3-20-5-5-2	M3	20	5.5	10	500
HNSM3-25-5-5-2	M3	25	5.5	10	500
HNSM3-30-5-5-2	M3	30	5.5	10	500
HNSM3-35-5-5-2	M3	35	5.5	10	500
HTSN-M3-5-6-2	M3	5	6	3	500
552198	M3	8	6	5	500
552191	M3	10	6	8	500
552201	M3	12	6	9	500
552211	M3	15	6	10	500
1317189	M3	18	6	10	500
552214	M3	20	6	10	500
HTSN-M3-25-6-2	M3	25	6	10	500
1317190	M3	30	6	10	500
HTSN-M3-35-6-2	M3	35	6	10	500
HTSN-M3-8-8-2	M3	8	8	5	500
HTSN-M3-10-8-2	M3	10	8	8	500
HTSN-M3-12-8-2	M3	12	8	9	500
HTSN-M3-15-8-2	M3	15	8	10	500
HTSN-M3-20-8-2	M3	20	8	10	500
HTSN-M3-25-8-2	M3	25	8	10	500
HTSN-M3-30-8-2	M3	30	8	10	500
HTSN-M3-35-8-2	M3	35	8	10	500
HTSN-M4-5-8-2	M4	5	8	3	500
1306280	M4	8	8	5	500
552192	M4	10	8	8	500
552209	M4	12	8	9	500
552199	M4	15	8	10	500
HTSN-M4-18-8-2	M4	18	8	10	500
1306279	M4	20	8	10	500
552195	M4	25	8	10	500
552194	M4	30	8	10	500
1317191	M4	35	8	10	500
522210	M4	40	8	10	500
1306281	M5	10	10	8	500
HTSN-M5-12-10-2	M5	12	10	9	500
HTSN-M5-15-10-2	M5	15	10	10	500
HTSN-M5-18-10-2	M5	18	10	10	500
HTSN-M5-20-10-2	M5	20	10	10	500
HTSN-M5-25-10-2	M5	25	10	10	500
HTSN-M5-30-10-2	M5	30	10	10	500
HTSN-M5-35-10-2	M5	35	10	10	500
1317192	M5	40	10	10	500

Hex Threaded Standoff Female/Female

HTSN-1/HNSM-1

Black, Nylon 6 25% Glass Filled, RMS-173



Part Number	Thread	Dimensions (mm)			Type	Std Pack Qty
		"L"	"H"	"P1"/"P2"		
HTSN-M2-5-5-1	M2	5	5	Through	2	500
HTSN-M2-8-5-1	M2	8	5	Through	2	500
HTSN-M2-10-5-1	M2	10	5	Through	2	500
HTSN-M2-12-5-1	M2	12	5	10	2	500
HTSN-M2-15-5-1	M2	15	5	10	2	500
HTSN-M2-18-5-1	M2	18	5	10	2	500
HTSN-M2-20-5-1	M2	20	5	10	2	500
HTSN-M2.5-5-5-1	M2.5	5	5	Through	2	500
HTSN-M2.5-8-5-1	M2.5	8	5	Through	2	500
552200	M2.5	10	5	Through	2	500
552215	M2.5	12	5	10	2	500
HNSM2.5-15-5-1	M2.5	15	5	10	2	500
HNSM2.5-18-5-1	M2.5	18	5	10	2	500
HNSM2.5-20-5-1	M2.5	20	5	10	2	500
552222	M2.5	25	5	10	2	500
HTSN-M3-5-5-5-1	M3	5	5.5	Through	1	500
HTSN-M3-8-5-5-1	M3	8	5.5	Through	1	500
HNSM3-10-5-5-1	M3	10	5.5	Through	1	500
HNSM3-12-5-5-1	M3	12	5.5	10	1	500
HNSM3-15-5-5-1	M3	15	5.5	10	1	500
HNSM3-18-5-5-1	M3	18	5.5	10	1	500
HNSM3-20-5-5-1	M3	20	5.5	10	1	500
HNSM3-25-5-5-1	M3	25	5.5	10	1	500
HNSM3-30-5-5-1	M3	30	5.5	10	1	500
HNSM3-35-5-5-1	M3	35	5.5	10	1	500
HTSN-M3-5-6-1	M3	5	6	Through	2	500
HTSN-M3-8-6-1	M3	8	6	Through	2	500
552206	M3	10	6	Through	2	500
552190	M3	12	6	Through	2	500
552196	M3	15	6	Through	2	500
552204	M3	18	6	10	2	500
HTSN-M3-20-6-1	M3	20	6	10	2	500
552216	M3	25	6	10	2	500
HTSN-M3-30-6-1	M3	30	6	10	2	500
HTSN-M3-35-6-1	M3	35	6	10	2	500
HTSN-M3-5-7-1	M3	5	7	Through	2	500
HTSN-M3-10-7-1	M3	10	7	Through	2	500
HTSN-M3-12-7-1	M3	12	7	Through	2	500
HTSN-M3-15-7-1	M3	15	7	Through	2	500
HTSN-M3-18-7-1	M3	18	7	10	2	500
HTSN-M3-20-7-1	M3	20	7	10	2	500

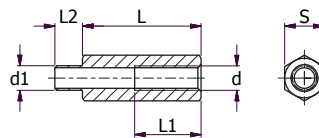
Part Number	Thread	Dimensions (mm)			Type	Std Pack Qty
		"L"	"H"	"P1"/"P2"		
HTSN-M3-25-7-1	M3	25	7	10	2	500
HTSN-M3-30-7-1	M3	30	7	10	2	500
HTSN-M3-5-8-1	M3	5	8	Through	2	500
HTSN-M3-8-8-1	M3	8	8	Through	2	500
HTSN-M3-10-8-1	M3	10	8	Through	2	500
HTSN-M3-12-8-1	M3	12	8	Through	2	500
HTSN-M3-15-8-1	M3	15	8	Through	2	500
HTSN-M3-20-8-1	M3	20	8	10	2	500
HTSN-M3-25-8-1	M3	25	8	10	2	500
HTSN-M3-30-8-1	M3	30	8	10	2	500
HTSN-M3-35-8-1	M3	35	8	10	2	500
HTSN-M4-5-8-1	M4	5	8	Through	2	500
HTSN-M4-8-8-1	M4	8	8	Through	2	500
HTSN-M4-10-8-1	M4	10	8	Through	2	500
HTSN-M4-12-8-1	M4	12	8	Through	2	500
552205	M4	15	8	Through	2	500
HTSN-M4-18-8-1	M4	18	8	Through	2	500
552203	M4	20	8	Through	2	500
HTSN-M4-25-8-1	M4	25	8	10	2	500
552207	M4	30	8	10	2	500
HTSN-M4-35-8-1	M4	35	8	10	2	500
552208	M4	40	8	10	2	500
HTSN-M4-10-10-1	M4	10	10	Through	2	500
HTSN-M4-12-10-1	M4	12	10	Through	2	500
HTSN-M4-15-10-1	M4	15	10	Through	2	500
HTSN-M4-18-10-1	M4	18	10	Through	2	500
HTSN-M4-20-10-1	M4	20	10	Through	2	500
HTSN-M4-25-10-1	M4	25	10	10	2	500
HTSN-M4-30-10-1	M4	30	10	10	2	500
HTSN-M4-35-10-1	M4	35	10	10	2	500
HTSN-M4-40-10-1	M4	40	10	10	2	500
HTSN-M5-10-10-1	M5	10	10	Through	2	500
HTSN-M5-15-10-1	M5	15	10	Through	2	500
HTSN-M5-18-10-1	M5	18	10	Through	2	500
HTSN-M5-20-10-1	M5	20	10	Through	2	500
HTSN-M5-25-10-1	M5	25	10	10	2	500
HTSN-M5-30-10-1	M5	30	10	10	2	500
HTSN-M5-35-10-1	M5	35	10	10	2	500
HTSN-M5-40-10-1	M5	40	10	10	2	500

Soldering Spacer - Male/Female

SR6124

Tin Plated Brass

- Designed to improve and automate fastening of metal spacers on PCB
- Low thermal inertia and tin plated finish
- Perfect electrical connection, suitable for EMC applications
- To be soldered manually or through a soldering wave



Part Number	Dimensions (mm)						Std Pack Qty
	d	S	L	L2	L1	d1	
314310041250	M3	5	10	3.5	6	3.1	100
314315041250	M3	5	15	3.5	8	3.1	100