

## Ocal® Installation Products

### Equipped with chain vise.

#### Tri-Stand Vise

- Sturdy, stable frame collapses for easy mobility and storage
- Ceiling brace for overhead support enables you to secure frame even during difficult work
- Features recesses for bending tubes 3/8", 1/2" and 3/4" O.D.



ROTH00076

CAT. NO.	DESCRIPTION	PIPE CAPACITY IN. METRIC SIZE DESIGNATOR*
ROTH00076	Tri-Stand with 6" Chain Vise (use with Ocal Jaws for PVC-coated conduit)	1/2 – 6 16 – 155

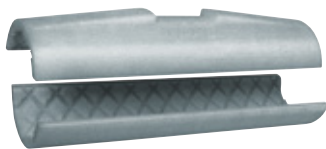
\* Metric size designator (ANSI C80.1-1994).

### Superior design and construction for faster, safer chain-vise clamping of PVC-coated conduit.

#### Ocal® Half-Shell Clamps

If you already have a chain vise, now you can avoid the expense of purchasing a yoke vise with special jaws — or the trouble of making clamps out of PVC or steel pipe — to cut and thread PVC-coated conduit. These Half-Shell Clamps come in the full range of 1/2" to 6" trade sizes. Buy the individual sizes you need, or choose our convenient set, which contains all the sizes from 1/2" to 2" in a handy carrying/storage case.

A unique internal design ensures secure clamping while protecting the integrity of the conduit's PVC coating. Cast from ductile iron for extreme strength and durability, Ocal® Half-Shell Clamps offer you years of consistent, reliable service.



- Two-piece construction, cast from ductile iron for exceptional strength, durability and performance
- Cross-hatched interior surface grips conduit securely while safeguarding PVC jacket from damage
- Available individually in 1/2" through 4" trade sizes
- Also available in a convenient set – 1/2" to 2" trade sizes
- Each clamp clearly marked with trade size for easy identification
- Openings at each end enable hanging for handy storage

CAT. NO.	CONDUIT SIZE	
	IN.	METRIC*
<i>Individual Half-Shell Clamps</i>		
HLF-SHL-CLP1/2	1/2	16
HLF-SHL-CLP3/4	3/4	21
HLF-SHL-CLP1	1	27
HLF-SHL-CLP1-1/4	1 1/4	35
HLF-SHL-CLP1-1/2	1 1/2	41
HLF-SHL-CLP2	2	53
HLF-SHL-CLP2-1/2	2 1/2	63
HLF-SHL-CLP3	3	78
HLF-SHL-CLP3-1/2	3 1/2	91
HLF-SHL-CLP4	4	103
<i>Half-Shell Clamp Set (in carrying/storage case)</i>		
HLF-SHL-CLP-SET1	1/2 – 2	16 – 53

\* Metric size designator (ANSI C80.1-1994).