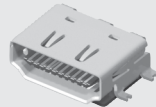
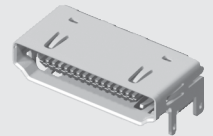


HDMR-19-01-S-SM-PF



HDMR-19-02-S-SM



HDMR-29-01-S-SM

**HDMR SERIES**

# HIGH-SPEED I/O RECEPTACLES

**SPECIFICATIONS**

For complete specifications and recommended PCB layouts see [www.samtec.com?HDMR](http://www.samtec.com?HDMR)

- Insulator Material:**  
High Temperature Thermoplastic
- Contact Material:**  
Copper Alloy
- Shell Material:**  
Nickel Plated Brass
- Operating Temp Range:**  
-25 °C to +85 °C
- Plating:**  
Gold on Contacts, Nickel on Shell and Tin on Tails
- Current Rating:**  
1.3 A per pin  
(6 adjacent pins powered)
- Voltage Rating:**  
40 VAC
- Minimum Cycles:**  
100
- Lead-Free Solderable:**  
Yes
- RoHS Compliant:**  
Yes

Meets Digital Display Working Group Single Monitor Interface Specifications

Optional Panel Flange (19 position only)

Hot Pluggable

Selectively Plated

19 or 29 Positions

Surface Mount or Through-hole Signal Leads

Through-hole or Surface Mount (19 only) Ground tails

HDMR	NO. OF POSITIONS	LEAD STYLE	PLATING	TAIL OPTION	OPTIONS	"X" R
	<b>-19</b> = 19 Positions / Mates with HPXXX 5 Pairs <b>-29</b> = 29 Positions / Mates with HPXXX 8 Pairs	<b>-01</b> = Through-hole Ground Tails <b>-02</b> = Surface Mount Ground Tails (-19 only)	<b>-S</b> = 30 μ" (0.76 μm) Gold on Mating Area, Tin on Tails	<b>-SM</b> = Surface Mount (Signal Leads) <b>-TH</b> = Through-hole (Only available on HDMR-19-01-X-TH-PF-L)	<b>-PF</b> = Panel Flange <b>-L</b> = Locking Option (Only available on HDMR-19-01-X-TH-PF-L & HDMR-29-01-X-TH-PF-L)	<b>-TR</b> = Tape & Reel <b>-FR</b> = Full Reel Tape & Reel (must order max. quantity per reel; contact Samtec for quantity breaks)

NO. OF POSITIONS	A
-19	(15.00) .591
-29	(22.30) .878

**Note:**  
Some lengths, styles and options are non-standard, non-returnable.