

Straight Blade Devices INSULGRIP® 15 & 20 Ampere Plugs and Connectors

Featuring Integral VARI-SIZE™ Cord Grip

Individually molded face for each blade configuration keeps debris out of plug interior.

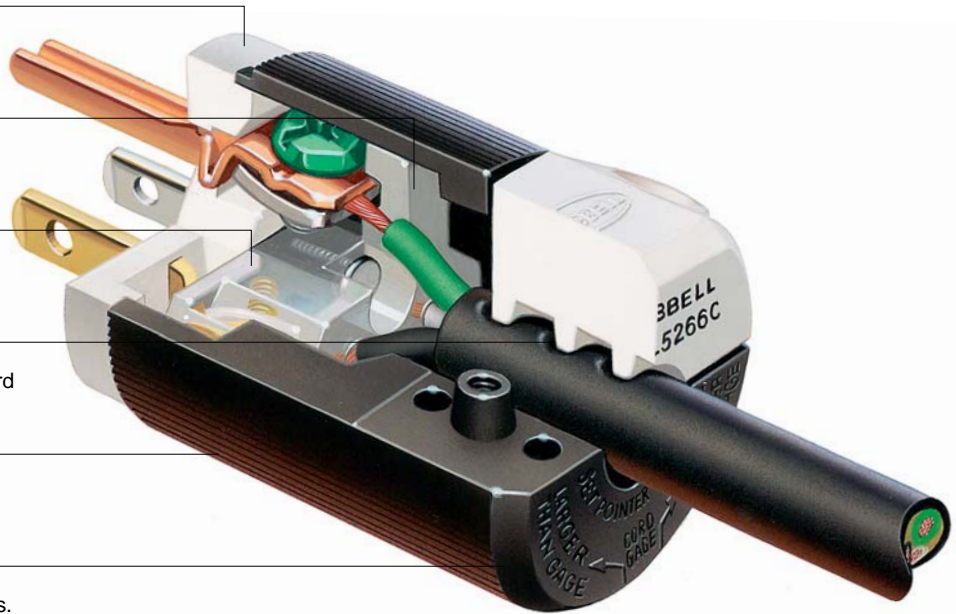
Roomy wiring chamber provides ample space for wiring.

Individual wiring terminals completely enclosed in their own separate chambers.

Powerful, offsetting cord grips clamp on individual conductors and outer cord jacket to prevent strain on terminals.

Ribbed nylon housing is impact and chemical resistant.

Beveled housing prevents snagging when dragged across uneven surfaces.



Integral VARI-SIZE insert adjusts to a wide range of cord sizes: .230"-.720" (5.8-18.3).



Multiple drive screws provide screwdriver versatility. Pocketed recess for cord grip screws deter slippage of the screwdriver.



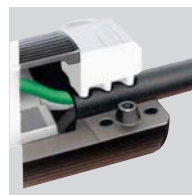
VARI-SIZE pointer set to "smaller than gauge" position. Cord diameter range is .230"-.360" (5.8-9.0). Accepts slotted and Phillips head drivers.



Transparent angled wiring entrance holes permit "straight in" conductor insertion.



Catalog number is visible on the device while in use for easy identification.



Powerful offsetting cord grips clamp on individual conductors and outer cord jacket to prevent strain on terminations.

Straight Blade Devices

2 Pole, 3 Wire Grounding

15 and 20 Ampere, 125 Volts

INSULGRIP® Heavy Duty Plugs



IP20
SUITABILITY



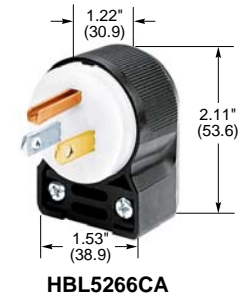
NEMA 5-15P
15A 125V
UL CSA
0.5 HP



NEMA 5-20P
20A 125V
UL CSA
1 HP

Insulgrip Plugs

Description	Cord Dia.	Catalog Numbers	
Black and white nylon.	.230"-.720" (5.8-18.3)	HBL5266C™	HBL5366C™
Corrosion resistant yellow nylon.	.230"-.720" (5.8-18.3)	HBL52CM66C	HBL53CM66C
8-position angle plug, black and white nylon.	.325"-.655" (8.3-16.6)	HBL5266CA	HBL5366CA
8-position angle plug, transparent enclosure.	.325"-.655" (8.3-16.6)	HBL5266CAT	—
Anchor lock, black and white nylon. ⁽¹⁾	.230"-.720" (5.8-18.3)	HBL5280C	—
Anchor lock, corrosion resistant yellow nylon. ⁽¹⁾	.230"-.720" (5.8-18.3)	HBL52CM80C	—
Finger grip, black neoprene, combination screws. CSA only.	.312"-.468" (7.9-11.9)	HBL5921	—
Fusible, black vinyl housing, slotted screws. CSA only.	.296"-.625" (7.5-15.9)	HBL5299	—



Insulgrip Hospital Grade Plugs

Description	Cord Dia.	Catalog Numbers	
Black and white nylon.	.230"-.720" (5.8-18.3)	HBL8215C™	HBL8315C
Transparent housing.	.230"-.720" (5.8-18.3)	HBL8215CT	HBL8315CT
8-position angle plug, transparent housing.	.250"-.655" (6.4-16.6)	HBL8215CAT	HBL8315CAT

Accessories

Seal-Tite® triple seal, black elastomer cover for Insulgrip® plugs when used in a cord set, and connector bodies when used with flanged inlets.	HBL6017*
Same as above except yellow.	HBL60CM17*
PLUGOUT® Lockout device for Hubbell plugs and others.	HLD

Notes: See page A-39 for accessories. See page A-42 for technical information.

⁽¹⁾UL component listed only. Not for general use applications.

*IP55 when installed and used properly with mating components.