

# Straight Blade Devices

## 20A, 250V, 2 Pole, 3 Wire Grounding

HBL® Extra Heavy Duty, Specification Grade, Duplex Receptacle

# HUBBELL

### Features

- Deep nylon body design delivers increased impact resistance
- One-piece brass integral ground strap
- Finder Groove Face
- Deep body design with circuit ID face

### Ordering Information

Description	Device Color	UPC	Catalog Number
Deep body design with	Brown	783585435480	HBL5462

### Listings

UL Listed to UL498 File No. E2186  
 Certified to CSA 22.2, No. 42 File 285  
 NEMA® WD-6 Compliant  
 NEMA® WD-6 Compliant

### Specifications

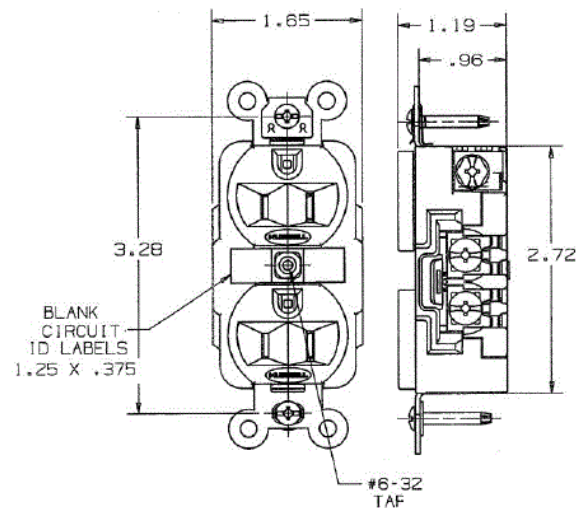
Face	Nylon
Base	PBT
Power Contacts	.036 in. (.9) Brass
Wire Clamps	.031 in. (.8) Brass
Clamping Plate	Nickel plated brass
Terminal Screws	Plated brass
Mounting Strap	.050 in. (1.3) Brass
Automatic Self-grounding Clip	Stainless steel
Mounting Screws	Zinc plated steel

### Performance

Electrical	
Current Interrupting	Certified for current interrupting at full rated current
Dielectric Voltage	Withstands 2,000V minimum
Mechanical	
Product Identification	Ratings are a permanent part of the device
Terminal Accommodation	#14-#10 AWG copper stranded or solid conductor only
Terminal Identification	Terminals identified in accordance with UL 498 and CSA
Environmental	
Flammability	Top: UL 94V-2, Base: UL 94V-0
Operating Temperatures	Maximum continuous 75°C; minimum -40°C (w/o impact)



20A 250V  
 NEMA 6-20R  
 UL CSA  
 2 HP



### Online Resources

Customer Use Drawing  
 eCatalog  
 Installation Instructions

### Accessories

Wallplate or Weatherproof Cover

Duplex Openin

Dimensions in Inches (mm)

Hubbell Wiring Device-Kellems • Hubbell Incorporated (Delaware) • 40 Waterview Drive • Shelton, CT 06484

Phone (800) 288-6000 • Fax (800) 255-1031 • Specifications subject to change without notice.

