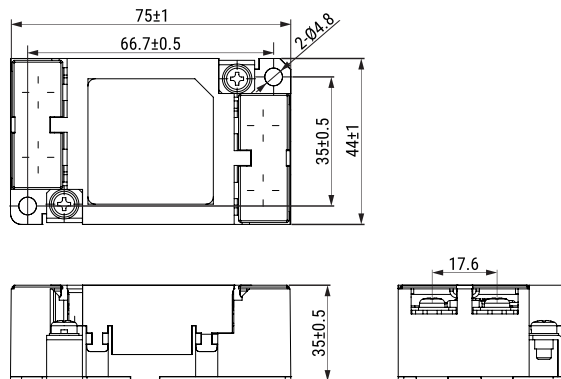


KEMET, GTX, EMI/RFI Filters, Noise Suppression, 250 VAC, 560 VDC, 10 A, 75x44x25mm



#### Dimensions

<b>L</b>	75mm +/-1mm
<b>W</b>	44mm +/-1mm
<b>H</b>	25mm +/-1mm
<b>S</b>	17.6mm NOM
<b>L1</b>	66.7mm +/-0.5mm
<b>W1</b>	35mm +/-0.5mm

#### Packaging Specifications

<b>Packaging Quantity:</b>	30
<b>Component Weight:</b>	122 g

#### General Information

<b>Series:</b>	GTX
<b>Style:</b>	Plastic Box
<b>Description:</b>	EMI Filter, With Y Capacitor
<b>Phase:</b>	Single-phase
<b>RoHS:</b>	With Exemptions
<b>Qualifications:</b>	UL, cUL, TUV
<b>Tightening Torque:</b>	1.2 ~ 1.4N-m (Recommended)
<b>Line Terminal:</b>	14-4(JST)
<b>Line Terminal Width:</b>	12 Max.
<b>Earth Terminal:</b>	R5.5-4(JST)
<b>Earth Terminal Width:</b>	9.5 Max.
<b>Miscellaneous:</b>	60 K Self-Temperature Rise Max.
<b>Terminal Type:</b>	Screw

#### Specifications

<b>Voltage AC:</b>	250 VAC
<b>Voltage DC:</b>	560 VDC
<b>Rated Current:</b>	10 A
<b>Temperature Range:</b>	-25/+55°C
<b>Leakage Current:</b>	0.75 mA (MAX)