



for a greener tomorrow



**MITSUBISHI
ELECTRIC**

Changes for the Better

FACTORY AUTOMATION

e-Factory

GOT2000 Series

Graphic Operation Terminal



GOT2000 *Wide*

Graphic Operation Terminal



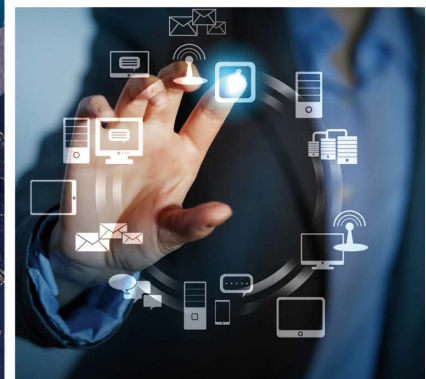
Smart silver



Cool black

- Large amounts of information in the wide display area
- Stylish and compact model with narrow bezel

GLOBAL IMPACT OF MITSUBISHI ELECTRIC



Through Mitsubishi Electric's vision, "Changes for the Better" are possible for a brighter future.

Changes for the Better

We bring together the best minds to create the best technologies. At Mitsubishi Electric, we understand that technology is the driving force of change in our lives. By bringing greater comfort to daily life, maximizing the efficiency of businesses and keeping things running across society, we integrate technology and innovation to bring changes for the better.

Mitsubishi Electric is involved in many areas including the following

Energy and Electric Systems

A wide range of power and electrical products from generators to large-scale displays.

Electronic Devices

A wide portfolio of cutting-edge semiconductor devices for systems and products.

Home Appliance

Dependable consumer products like air conditioners and home entertainment systems.

Information and Communication Systems

Commercial and consumer-centric equipment, products and systems.

Industrial Automation Systems

Maximizing productivity and efficiency with cutting-edge automation technology.

INDEX

1. Lineup	04
2. Hardware	06
GT21 Wide Model	06
3. Features	08
4. Specifications	14
5. Product List	16
6. Support	18



GOT2000 *Wide*
Graphic Operation Terminal

GOT2000 *Wide*

Graphic Operation Terminal





Large amounts of information
in the wide display area

Stylish and compact model
with narrow bezel

Smart silver, cool black

GT25 model Coming soon

The high-performance wide model is coming soon.

GT21 model

Coming soon

Ethernet	CC-Link IE Field Basic	RS-232	RS-422/485
Memory for storage (ROM) 15MB			



GT2107-WTBD



GT2107-WTSD

7" Wide	
WVGA	DC power

Display section : TFT color
Display color : 65536 colors
Resolution : 800 x 480 dots

HMI/GOT Screen Design Software

Professional Designs in Just a Few Clicks

You can design GOT wide screens with GT Works3, familiar software that can be commonly used for the GOT2000 Series.

* Use GT Works3 Version 1.170C or later to design GT2107 screens.

GOT Screen Design Software
MELSOFT GT Works3+plus



GT21 model Available in 2 colors

Affordable and compact, equipped with basic functions and high resolution LCD. The GOT wide model satisfies your needs in various applications.



High resolution WVGA:
800 × 480 dots



Ethernet, USB host (USB-A)
equipped as standard



Support VNC server
function **Coming soon**



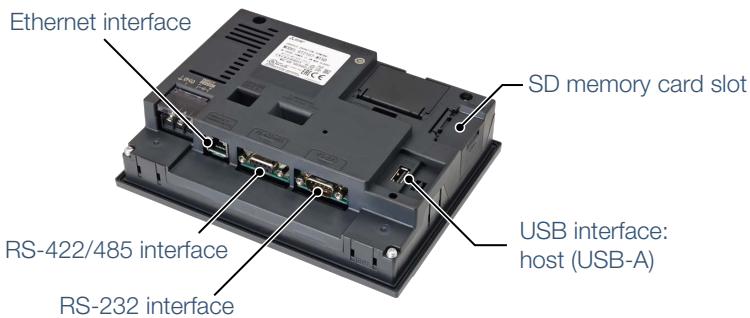
Support outline font and
antialiasing

Specifications

Item	Specifications
	GT2107-WTBD GT2107-WTSD
Display	7" Wide, 65536 colors, TFT color LCD
Resolution	WVGA 800 × 480 dots
Backlight	White LED
User memory	Memory for storage (ROM):15 MB
Standard interface	Ethernet, RS-232, RS-422/485, USB host (USB-A), USB device (USB Mini-B), SD memory card slot

Various interfaces

Ethernet interface

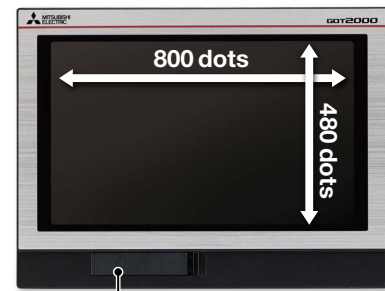


SD memory card slot

RS-422/485 interface

USB interface:
host (USB-A)

RS-232 interface



USB interface: device (USB Mini-B)



Wide screen displays large
amounts of information

High resolution WVGA screen has sufficient display area for long alarm messages.

> For more details, see page 8 and page 9.

▶ Greatly increased expressiveness!



External dimensions are almost the same

Standard
5.7" GT1055-Q external dimensions:
164 (W) × 135 (H) × 56 (D) mm
(6.46 (W) × 5.32 (H) × 2.21 (D) inch)

Wide
7" GT2107-W external dimensions:
189 (W) × 142 (H) × 48 (D) mm
(7.44 (W) × 5.59 (H) × 1.89 (D) inch)

4.2 times larger resolution

Standard

QVGA 320 × 240 dots



Wide

WVGA 800 × 480 dots



Connect one GOT to various
industrial devices *

Ethernet (1 port) and various interfaces are equipped as standard. The first GT21 model with the USB host enables you to connect a USB mouse and keyboard, or transfer data using a USB memory.

* GT2107 only.

> For more details, see page 12 and page 13.



GOT2000 *Wide*

Graphic Operation Terminal



Coming soon

Remote monitoring provides wide access to application *

Remote monitoring with the VNC server function is now available on GT21. By remotely connecting to GOT from personal computer or tablet, you can operate, monitor production equipment and connect to system devices.

* GT2107 only.

> For more details, see page 10.



Enhanced graphics *

Outline fonts can now be used on GT21. Antialiasing smooths out jagged text edges and displays clear characters, offering improved visibility of screen display.

* GT2107 only.

Standard 16dot HQ Gothic

Happy

Wide Outline Gothic (antialiasing enabled)

Happy

▶ Clear characters improves visibility

Improve visibility and operation of your application with GOT wide model

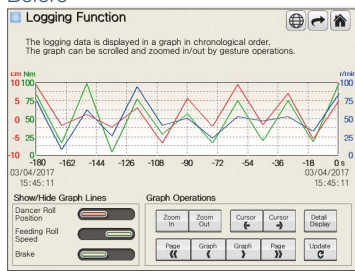
The GOT wide model has various advantages and benefits



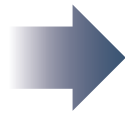
The greater amount visual information, the higher productivity

Increase the graph display area

Before

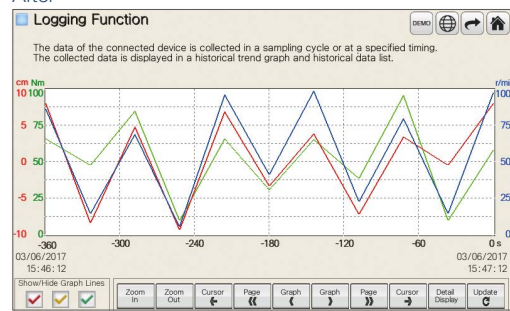


Can I check more information in a graph on a single screen?



On wide model

After



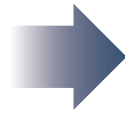
The wide landscape screen displays a large amount of graph information.

Increase alarm information

Before

Occurred	Message	Rest.
3/ 4/2017 15:46:04	Parameter error	15:46
3/ 4/2017 15:46:04	Fuel error	15:46
3/ 4/2017 15:46:04	Internal pressure error	15:46
3/ 4/2017 15:46:04	Timing belt fault	15:46
3/ 4/2017 15:46:04	Apparatus life	15:46
3/ 4/2017 15:46:04	Oil pressure error	15:46
3/ 4/2017 15:46:04	Battery error	15:46
3/ 4/2017 15:46:04	Fuse error	15:46
3/ 4/2017 15:46:04	Parameter error	15:46

Can I check more alarms on a single screen?



On wide model

After

Occurred	Message	Rest.
03/04/2017 15:45:59	Parameter error	15:46
03/04/2017 15:45:59	Fuel error	15:46
03/04/2017 15:45:59	Internal pressure error	15:46
03/04/2017 15:45:59	Timing belt fault	15:46
03/04/2017 15:45:59	Apparatus life	15:46
03/04/2017 15:45:59	Oil pressure error	15:46
03/04/2017 15:45:59	Battery error	15:46
03/04/2017 15:45:59	Fuse error	15:46
03/04/2017 15:45:59	Parameter error	15:46
03/04/2017 15:45:59	Fuel error	15:46
03/04/2017 15:45:59	Internal pressure error	15:46
03/04/2017 15:45:59	Timing belt fault	15:46
03/04/2017 15:45:59	Apparatus life	15:46
03/04/2017 15:45:59	Oil pressure error	15:46

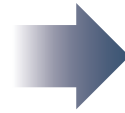
Move the operation menu to the side of the wide screen and you can display more alarms.

Always show numeric keypad

Before

Time	Current	Predicted	Achieved	Operation speed
15:48	3456	3456	3456	Low Medium High
15:48	3456	3456	3456	
15:48	3456	3456	3456	
15:48	3456	3456	3456	
15:48	3456	3456	3456	
15:48	3456	3456	3456	
15:48	3456	3456	3456	
15:48	3456	3456	3456	
15:48	3456	3456	3456	
15:48	3456	3456	3456	

Can I avoid hiding the information every time I enter a value to a numerical input?



On wide model

After

Time	Current	Predicted	Achieved	Operation speed
15:49	3456	3456	3456	Low Medium High
15:49	3456	3456	3456	
15:49	3456	3456	3456	
15:49	3456	3456	3456	
15:49	3456	3456	3456	
15:49	3456	3456	3456	
15:49	3456	3456	3456	
15:49	3456	3456	3456	
15:49	3456	3456	3456	
15:49	3456	3456	3456	

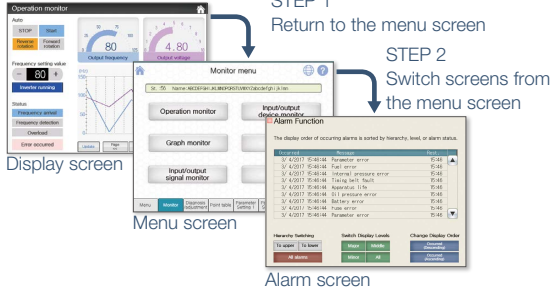
Put the numerical keypad on the base screen and operate the screen while viewing necessary information.



Improve operability by always displaying the menu

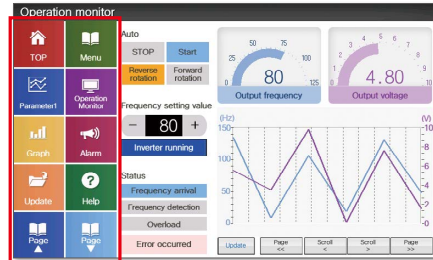
Quickly change screens from every display screen

Before



Do I always have to return to the menu screen?

After

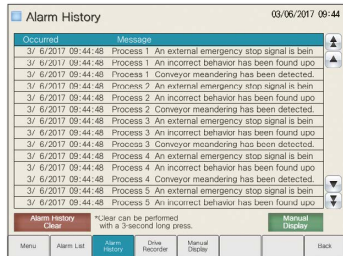


Arrange the menu on the side of the wide screen and switch screens with just one touch operation.

Display large amounts of information in all languages

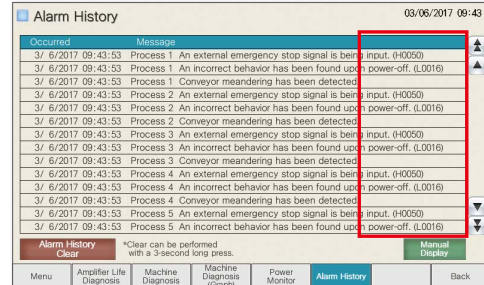
View the information at a glance

Before



The amount of information on a single screen varies depending on the language to use.

After



Display large amounts of information on the wide screen regardless of the language.

Install GOT in confined spaces

Downsize the operation panel



Compact body with wide display area!

On wide model



The compact body can be installed vertically and enables downsizing of the machine.

GOT Smart Remote Solutions

The GOT2000 improves visualization accessibility and reduces total cost of ownership



Monitor and operate from remote locations

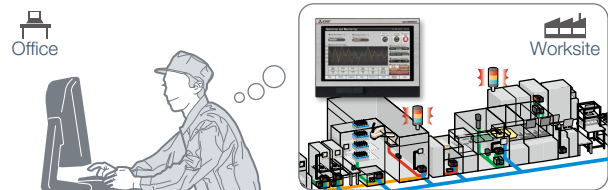
VNC server function * **Coming soon**

Monitor production remotely

Remotely view and operate the GOT screen from information devices such as a personal computer and tablet. No dedicated screens are required.

- * GT2107 only.
- * A separate license (GT25-VNCSKEY) is required.
- * One client can connect to one GOT at the same time.

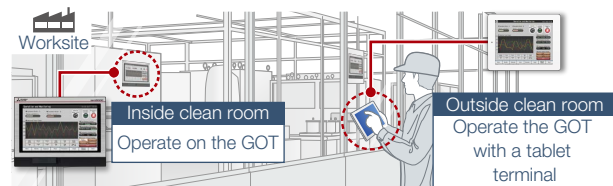
On a personal computer in your office



Same operations as GOT

Utility functions including the backup/restoration function and the device monitor are also supported on computers and tablets.

On a tablet from a remote location



Safe operation avoiding simultaneous operations

Exclusive control of authorization prevents accidents that might be caused by simultaneous operations by multiple operators.

With operating authority
 Input operations enabled



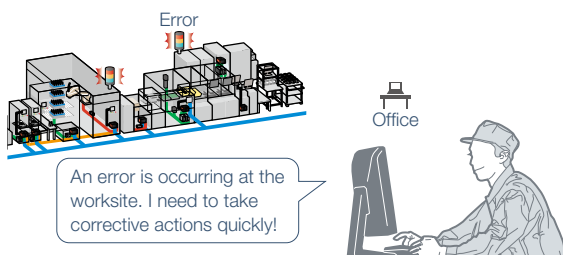
Without operating authority
 Input operations disabled



Application examples

Check the alarm without visiting the worksite

From a remote office, you can easily monitor the alarms. Check the alarm and corrective actions in detail, and you can solve the problem quickly and reduce downtime.



Easily startup the large equipment

When starting up and adjusting the large-scale equipment, you may have to work away from the GOT. You can now check the GOT screen using a tablet from a remote location so that all the work can be done by a single operator efficiently.



Specification details and restrictions

For the supported connection types and necessary option devices, please refer to the Graphic Operation Terminal GOT2000 Series Catalog (L(NA)08270ENG) or the relevant product manual.

GOT Easy Drive Control Interactive Solutions

Support startup, adjustment of servo systems with advanced functionality and improved connectivity

For the details of the GOT2000 Series drive control interactive functions, please refer to the following catalog.

- GOT2000 Series Drive Control Interactive Solutions catalog (L(NA)08335ENG)



Support startup, adjustment, and maintenance of servo systems

Drive control interactive functions

The GOT2000 provides major functions of MR Configurator2 (supporting MR-J4). The GOT Drive enhanced functionality is designed to eliminate need for additional hardware, software and suits customers' applications to speed up system startup, improve maintenance and troubleshooting.

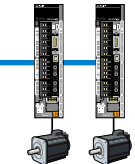
GOT2000



Simple Motion module



Servo amplifier MR-J4-□B(-RJ)



Check the status of servo amplifier without using a personal computer

Support screen design with sample screens

Sample screens are available for connection between GOT2000 and servo amplifiers. You can change parameters, monitor the servo amplifiers, and perform test operations. Sample code screens are included with GT Works3.

Compatible language: English, Japanese, Simplified Chinese

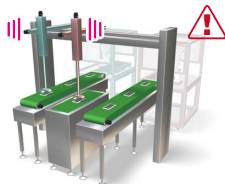


Recommended functions

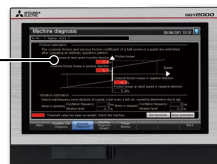
Machine diagnosis function

GOT displays the machine diagnosis screen of the maintenance functions of MR Configurator2. In addition, by using estimation values collected by logging and threshold values set on the GOT, you can predict machine deterioration and make preventive maintenance easy.

MELSERVO-J4-GF(-RJ) is now supported. This servo amplifier automatically calculates threshold values and creates the screen to predict machine failure. There is no need to set threshold values on GOT.



Perform preventive maintenance before the machine stops



One-touch tuning function/Tuning function

GOT displays the tuning screens that are equivalent to the adjustment functions of MR Configurator2. You can easily adjust gain parameters of servo amplifiers on the GOT without a personal computer.

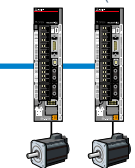
GOT2000



Simple Motion module



Servo amplifier MR-J4-□B(-RJ)



There is no need to use a personal computer

Specification details and restrictions

For the supported connection types and necessary option devices, please refer to the Graphic Operation Terminal GOT2000 Series Catalog (L(NA)08270ENG) or the relevant product manual.

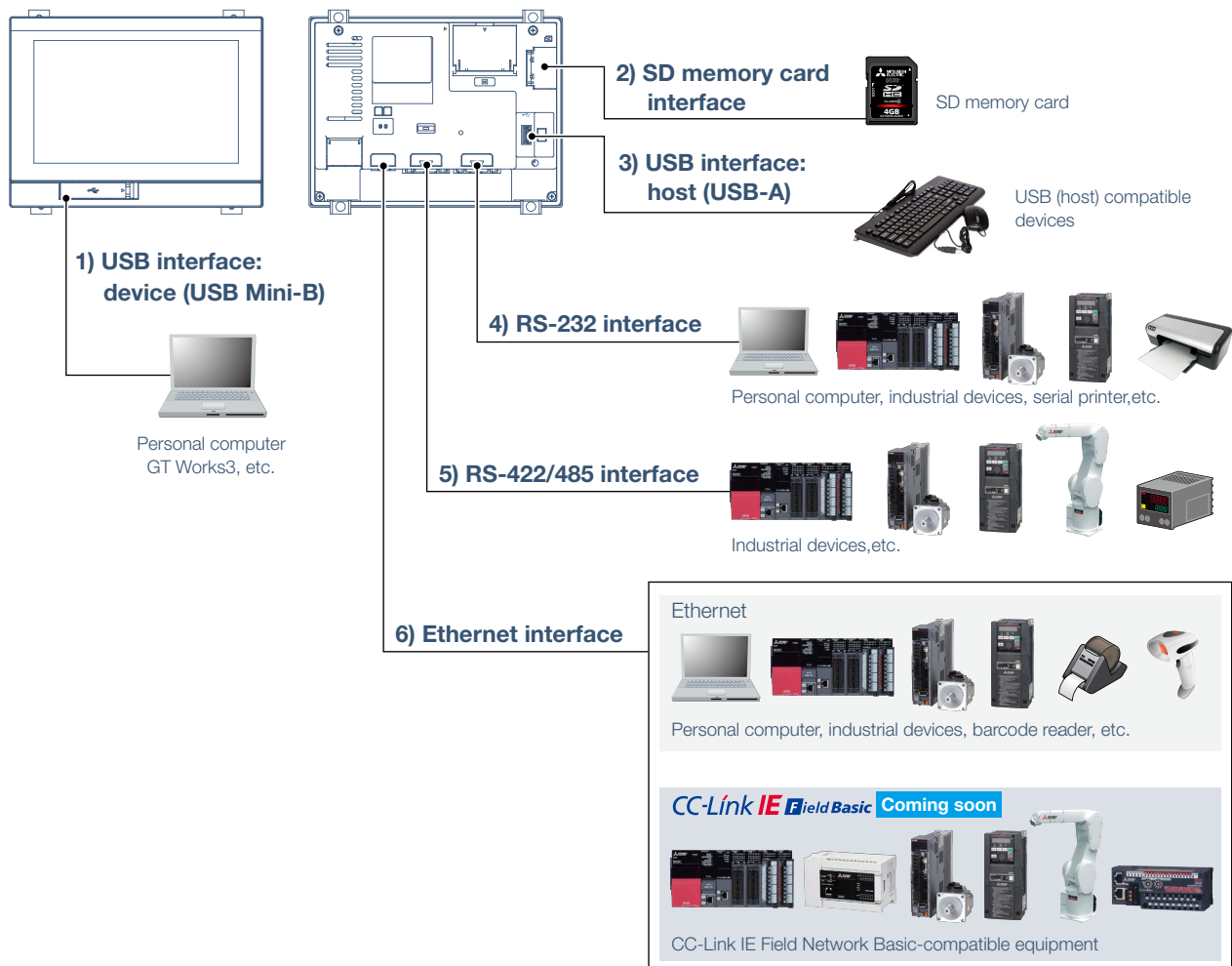
Easily connect to various industrial devices

Simply connect to various controllers using built-in interfaces of GOT



Built-in interfaces of GOT to connect to various industrial devices

GT2107-WTBD/GT2107-WTSD



Specification details and restrictions

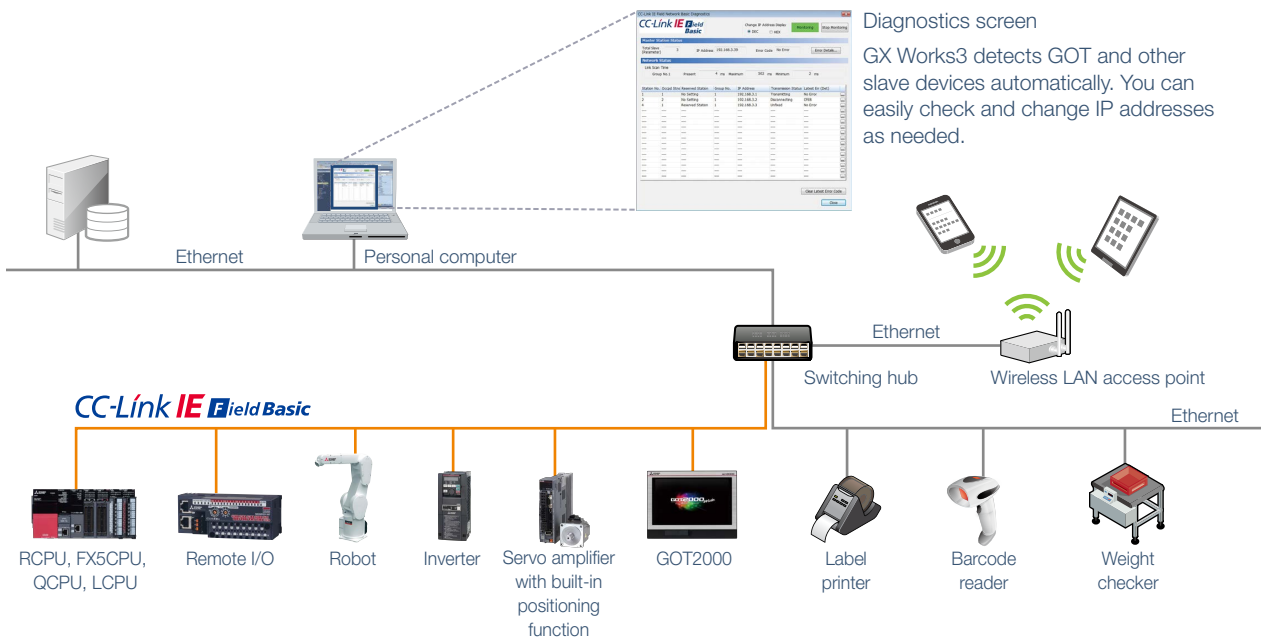
For the supported connection types and necessary option devices, please refer to the Graphic Operation Terminal GOT2000 Series Catalog (L(NA)08270ENG) or the relevant product manual.



Highly flexible system configuration

Support CC-Link IE Field Network Basic **Coming soon**

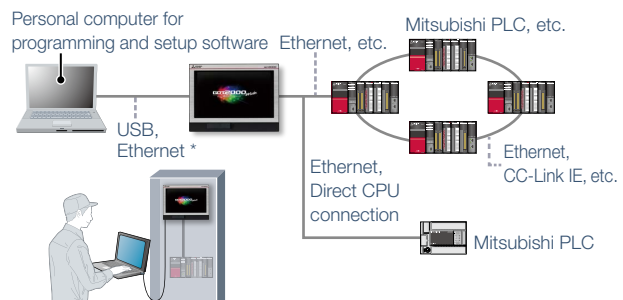
Use the standard Ethernet interface and connect GOT with CC-Link IE Field Network Basic compatible devices. Ethernet TCP/IP communication can be used together with CC-Link IE Field Network Basic.



Easy debugging

FA transparent function

By connecting a personal computer to the front USB interface on the GOT, you can use the GOT as a transparent gateway to enable programming, startup, and adjustment of industrial devices. Users do not have to bother with opening the cabinet or changing cable connections.



* Unusable when the GOT is connected to controllers via Ethernet connection.

Specification details and restrictions

For the supported connection types and necessary option devices, please refer to the Graphic Operation Terminal GOT2000 Series Catalog (L(NA)08270ENG) or the relevant product manual.

Function list

For details of functions, supported controllers, and connection types, please refer to the GOT2000 Series Manual or Help.
 ●: Supported —: Not supported ○: Option devices required △: Option devices required depending on usage

Category	Function name	Option devices	GT21		
			GT2107	Standard model	
Figure/object functions	Figure		●	●	
	Logo text		●	●	
	Touch switch		●	●	
	Lamp		●	●	
	Numerical display, Numerical input		●	●	
	Text display, Text input		●	●	
	Date display, Time display	△	●	●	
	Comment display		●	●	
	Parts display	△	●	●*5	
	Parts movement	△	●	●*5	
	Historical data list display	△	●	●*5	
	Simple alarm display		●	●	
	System alarm display		—	—	
	Alarm display (user)	△	●	●*5	
	Alarm display (system)	△	—	—	
	Recipe display (record list)		—	—	
	Graph		●	●	
	Historical trend graph	△	●	●*5	
	Graphical meter		●	●	
	Level, Panelmeter		●	●	
	Slider		●	●	
	Document display	○	—	—	
	Logging	△	●	●*2	
	Recipe	△	●	●*5	
	Device data transfer		●	●	
	Trigger action		●	●	
	Time action	△	●	●	
	Hard copy	File output	○	●	●*2
		Serial printer output		●	●*2
		PictBridge printer output	○	—	—
	Project script, Screen script		●	●	
	Object script		—	—	
	Functions performed on background of GOT	Barcode function		●	●*2
		RFID function		●	●*2
		GOT Mobile function	○	—	—
VNC server function		○	●	—	
Remote personal computer operation function (Ethernet)		○	—	—	
Remote personal computer operation function (serial)		○	—	—	
Video display function		○	—	—	
RGB display function		○	—	—	
Multimedia function		○	—	—	
External I/O function		○	—	—	
Operation panel function		○	—	—	
RGB output function		○	—	—	
Report function		Serial printer output	△	●	●*2
		PictBridge printer output	○	—	—
Sound output function		△	—	—	
Server function, Client function			—	—	
Mail send function			—	—	
FTP server function		△	●	●*4	
File transfer function (FTP transfer)		○	●	●*4	
File transfer function (GOT internal transfer)		○	—	—	
MES interface function		○	—	—	
Wireless LAN function		△	—	—	
USB mouse, USB keyboard			●	—	
				NEW	—

Category	Function name	Option devices	GT21		
			GT2107	Standard model	
GOT functions	Base screen		●	●	
	Overlap window		●	●	
	Superimpose window		●	●	
	Dialog window		●	●	
	Mobile screen		—	—	
	Key window		●	●	
	Language switching		●	●	
	System information		●	●	
	Operator authentication function	△	●	●*5	
	Operation log	○	—	—	
	Startup logo		●	●	
	KANA KANJI conversion		—	—	
	FA transparent		●	●	
	SoftGOT-GOT link	○	—	—	
	Backup/Restoration	○	●	●*2	
	Multi-channel function		●	●*2	
			2 channels (No units can be mounted)	2 channels (No units can be mounted)	
	Station No. switching		●	●	
	GOT network interaction		—	—	
	Screen gesture function		—	—	
	Object gesture function		—	—	
	Security key authentication function		—	—	
	IP filter function		—	—	
	File manager	△	—	—	
	Vertical display *1		●	●	
			(Rotate 90° to left)	(Rotate 90° to right)	
	Maintenance functions	Device monitor		●	●
		Sequence program monitor (Ladder)	○	—	—
		Sequence program monitor (SFC)	○	—	—
		Network monitor		—	—
		CC-Link IE Field Network diagnostics		—	—
		Intelligent module monitor		—	—
		Drive recorder	△	—	—
		Servo amplifier monitor		—	—
		R motion monitor		—	—
Q motion monitor			—	—	
Motion SFC monitor		○	—	—	
CNC monitor 2			—	—	
CNC monitor			—	—	
CNC data I/O		○	—	—	
CNC machining program edit			—	—	
Log viewer		△	—	—	
FX list editor			●	●*3	
FX ladder monitor			—	—	
iQSS utility		○	—	—	
System launcher			—	—	
MELSEC-L troubleshooting		—	—		

*1 Remote personal computer operation function (Ethernet) cannot be used.
 The following screens are displayed horizontally:
 Utility screen, monitor and data management screens that are displayed from the utility screen (sequence program monitor, etc.)
 For the details of other GOT operations when placed vertically, please refer to the relevant product manual or the Help.

*2 Excluding GT2103-PMBLS.

*3 GT2104-RTBD only.

*4 GT2104-R, GT2103-PMBD only.

*5 On GT2103-PMBLS, only the functions that do not require SD memory card can be used.

Specifications

General specifications

Item	Specifications						
Operating ambient temperature *1	0 °C to 55 °C (horizontal installation), 0 °C to 50 °C (vertical installation)						
Storage ambient temperature	-20 °C to 60 °C						
Operating ambient humidity	10% RH to 90% RH, non-condensing *2						
Storage ambient humidity	10% RH to 90% RH, non-condensing *2						
Vibration resistance	Compliant with JIS B 3502 and IEC 61131-2	Under intermittent vibration	Frequency	Acceleration	Half amplitude	Sweep count	
			5 to 8.4 Hz	—	3.5 mm	10 times in each X, Y, or Z direction	
		Under continuous vibration	8.4 to 150 Hz	9.8 m/s ²	—	—	—
			5 to 8.4 Hz	—	1.75 mm	—	—
8.4 to 150 Hz	4.9 m/s ²	—	—	—	—		
Shock resistance	Compliant with JIS B 3502 and IEC 61131-2 (147 m/s ² (15G), 3 times in each X, Y, or Z direction)						
Operating atmosphere	No greasy fumes, corrosive gas, flammable gas, excessive conductive dust, and direct sunlight (as well as at storage)						
Operating altitude *3	2000 m or less						
Installation location	Inside control panel						
Overvoltage category *4	II or less						
Pollution degree *5	2 or less						
Cooling method	Self-cooling						
Grounding	Grounding with a ground resistance of 100 Ω or less by using a ground cable that has a diameter of 1.6 mm or more. If impossible, connect the ground cable to the control panel.						

*1 Includes the temperature inside the enclosure of the control panel to which the GOT is installed.

*2 If the ambient temperature exceeds 40 °C, the absolute humidity must not exceed 90% RH at 40 °C.

*3 Do not use or store the GOT under a pressure higher than the atmospheric pressure at altitude 0 m. Doing so may cause a malfunction. Air purging by applying pressure to the control panel may create clearance between the surface sheet and the touch panel. This may cause the touch panel to be not sensitive enough or the sheet to come off.

*4 This indicates the section of the power supply to which the equipment is assumed to be connected through the public electrical power distribution network and the machinery within the premises. Category II applies to equipment that is supplied with power from fixed facilities. The withstand surge voltage for the equipment with the rated voltage up to 300 V is 2500 V.

*5 This indicates the occurrence rate of conductive material in an environment where a device is used. Pollution degree 2 indicates an environment where only non-conductive pollution occurs normally and a temporary conductivity caused by condensation shall be expected depending on the conditions.

Power supply specifications

Item	Specifications	
	GT2107-WTBD	GT2107-WTSD
Power supply voltage	24 V DC (+10%, -15%)	
Power supply frequency	—	
Power consumption	Under the maximum load	11.3 W or less
	Main unit (backlight OFF)	7.0 W
Inrush current	35 A or less (3 ms, ambient temperature: 25 °C, under the maximum load)	
Permissible instantaneous power failure time	5 ms or less	
Noise immunity	Noise voltage: 1000 Vp-p, noise width: 1 μs, measured by a noise simulator with noise frequency ranging from 30 Hz to 100 Hz	
Withstand voltage	500 V AC for 1 minute across power terminals and earth	
Insulation resistance	500 V DC across power terminals and earth, 10 MΩ or more by an insulation resistance tester	

Operate and store the GOT in environments without direct sunlight, high temperature, dust, humidity, and vibrations.

For inquiries relating to the status of conforming to various standards and laws (CE, UL/cUL, KC), please contact your local sales office.

Performance specifications

Item	Specifications		
	GT2107-WTBD	GT2107-WTSD	
Display section *1*2	Display device	TFT color LCD	
	Screen size	7" Wide	
	Resolution	WVGA: 800 × 480 dots	
	Display size	152.4(6.00) (W) × 91.44(3.60) (H) mm (inch)	
	Number of displayed characters	16-dot standard font: 50 characters × 30 lines (two-byte characters)	12-dot standard font: 66 characters × 40 lines (two-byte characters)
		65536 colors	65536 colors
	Brightness adjustment	32 levels	32 levels
	Backlight	LED (Not replaceable)	LED (Not replaceable)
	Backlight life *4	Approx. 50000 h (operating ambient temperature: 25 °C, display intensity: 50%)	
	Touch panel *3	Type	Analog resistive film
Key size		Minimum 2 × 2 dots *8 (per key)	
Simultaneous press		Not available *5 (Only 1 point can be touched.)	
Life		1 million touches or more (operating force: 0.98 N or less)	
Panel color	Black	Silver	
User memory	User memory capacity	Memory for storage (ROM): 15 MB	
	Life (number of write times)	100000 times	
Built-in clock precision	±45 seconds/month (ambient temperature: 25 °C)		
Battery	GT11-50BAT lithium battery		
	Life	Approx. 5 years (ambient temperature: 25 °C)	
Built-in interface	RS-232	1 channel Transmission speed: 115200, 57600, 38400, 19200, 9600, 4800 bps Connector shape: D-sub 9-pin (male)	
	RS-422/485	1 channel Transmission speed: 115200, 57600, 38400, 19200, 9600, 4800 bps Connector shape: D-sub 9-pin (female)	
	Ethernet	1 channel Data transfer method: 10BASE-T, 100BASE-TX Connector shape: RJ-45 (modular jack)	
	USB (host)	1 channel (rear face)	1 channel (rear face)
		Maximum transfer rate: Full-Speed 12 Mbps Connector shape: USB-A	Maximum transfer rate: Full-Speed 12 Mbps Connector shape: USB-A
	USB (device)	1 channel (front face)	1 channel (front face)
		Maximum transfer rate: Full-Speed 12 Mbps Connector shape: USB Mini-B	Maximum transfer rate: Full-Speed 12 Mbps Connector shape: USB Mini-B
	SD memory card	1 channel, SDHC compliant (maximum 32 GB)	1 channel, SDHC compliant (maximum 32 GB)
Wireless LAN communication unit interface	—	—	
Sound output interface	—	—	
Buzzer output	Single tone (tone length adjustable)		
POWER LED	—		
Protective structure *6	Front: IP67F *7*9 Inside control panel: IP2X		
External dimensions	189 (7.44) (W) × 142 (5.59) (H) × 48 (1.89) (D) mm (inch)		
Panel cut dimensions	180.5 (7.11) (W) × 133.5 (5.26) (H) mm (inch)		
Weight (excluding a fitting)	0.7 (1.54) kg (lb)		
Compatible software package	GT Works3 Version1.170C or later		

*1 As a characteristic of liquid crystal display panels, bright dots (always lit) and dark dots (never lit) may appear on the panel. Since liquid crystal display panels comprise a great number of display elements, the appearance of bright and dark dots cannot be reduced to zero. Individual differences in liquid crystal display panels may cause differences in color, uneven brightness and flickering. Note that these phenomena are characteristics of liquid crystal display panels and it does not mean the products are defective or damaged.

*2 Flickering may occur due to vibration, shock, or the display colors.

*3 When a stylus is used, the touch panel has a life of 100 thousand touches. The stylus must satisfy the following specifications.

- Material: polyacetal resin
- Tip radius: 0.8 mm or more

*4 To prevent the display section from burning in and lengthen the backlight life, enable the screen save function and turn off the backlight.

*5 If you touch two points or more simultaneously on the touch panel, a touch switch near the touched points may operate unexpectedly. Do not touch two points or more simultaneously on the touch panel.

*6 Note that the structure does not guarantee protection in all users' environments. The GOT may not be used in certain environments where it is subjected to splashing oil or chemicals for a long period of time or soaked in oil mist.

*7 To conform to IP67F, close the USB environmental protection cover by pushing the [PULL] mark firmly. (The GOT conforms to IP2X when the USB environmental protection cover is open.)

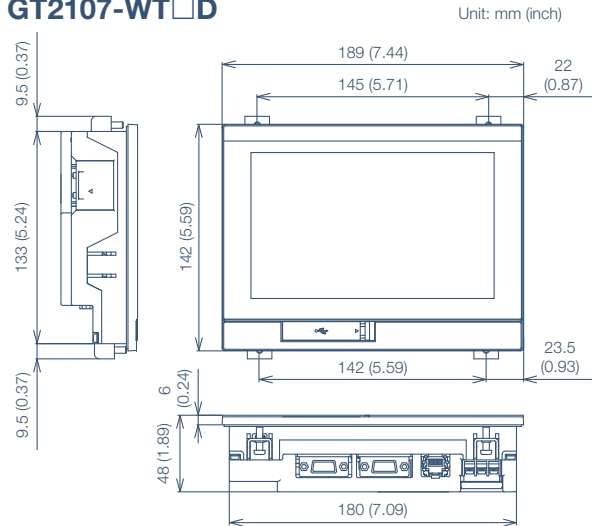
*8 The minimum size of a key that can be arranged. To ensure safe use of the product, the following settings are recommended.

- Key size: 16 × 16 dots or larger
- Distance between keys: 16 dots or more

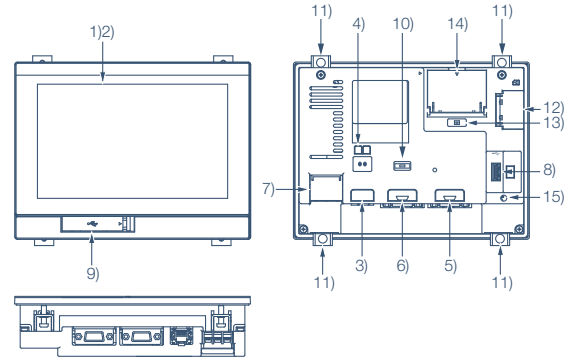
*9 The suffix "F" of IP67F is a symbol that indicates protection rate against oil. It is described in the Appendix of Japanese Industrial Standard JIS C 0920.

External dimensions

GT2107-WT□D



Components names

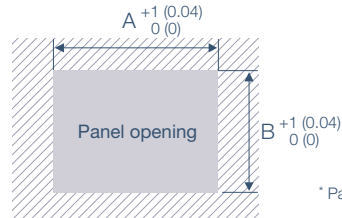


- 1) Display section
- 2) Touch panel
- 3) Ethernet interface
- 4) Ethernet communication status LED
- 5) RS-232 interface
- 6) RS-422/485 interface
- 7) Power terminal
- 8) USB interface (host/rear face)
- 9) USB interface (device/front face)
- 10) Terminating resistor setting switch
- 11) Unit installation fitting
- 12) SD memory card interface
- 13) SD memory card access LED (inside the cover)
- 14) Battery (inside the cover)
- 15) Cable clamp mounting hole

Panel cut dimensions

Unit: mm (inch)

Screen size	Model	A	B
7" Wide	GT2107-WT□D	180.5 (7.11)	133.5 (5.26)



* Panel thickness: 1.6 mm to 4 mm
(0.06 inch to 0.16 inch)

Product List

GOTs

Classification	Model	Screen size	Display section Display color	Panel color	Power
Wide model	GT2107-WTBD	7" WWGA	TFT color	Black	24 V DC
	GT2107-WTSD		65536 colors	Silver	

Options

Product name	Model	Specifications
Protective sheet	GT21-07WPSGC Coming soon	For 7" Wide <ul style="list-style-type: none"> • Antiglare type • Transparent • With a hole for the USB environmental protection cover • A set of 5 sheets
	GT21-07WPSCC Coming soon	For 7" Wide <ul style="list-style-type: none"> • Clear type • Transparent • With a hole for the USB environmental protection cover • A set of 5 sheets
USB environmental protection cover	GT21-WUCOV Coming soon	Environmental protection cover for the USB interface on the front face of the wide model GOT (for replacement)
Memory card SD memory card	NZ1MEM-2GBSD	SD memory card for GOT, 2 GB
	NZ1MEM-4GBSD	SDHC memory card for GOT, 4 GB
	NZ1MEM-8GBSD	SDHC memory card for GOT, 8 GB
	NZ1MEM-16GBSD	SDHC memory card for GOT, 16 GB
Battery	GT11-50BAT	Battery for backup of SRAM data and clock data.
Panel-mounted USB port extension	GT14-C10EXUSB-4S	Cable length: 1m, for extending the USB port of GOT to the surface of a control panel

Software

Product name	Model	Description		
HMI/GOT Screen Design Software MELSOFT GT Works3	SW1DND-GTWK3-E	English Version	Standard license product	DVD-ROM
	SW1DND-GTWK3-EA		Volume license product *1	
	SW1DND-GTWK3-EAZ		Additional license product *1*2	
VNC Server Function License *3*4 (GT21/GT25 common)	GT25-VNCSKEY-1	1 license		
	GT25-VNCSKEY-5	5 licenses		
	GT25-VNCSKEY-10	10 licenses		
	GT25-VNCSKEY-20	20 licenses		

*1 The desired number of licenses (2 or more) can be purchased. For details, please contact your local sales office.

*2 This product does not include the DVD-ROM. Only the license certificate with the product ID No. is issued.

*3 1 license is required for 1 GOT unit.

*4 The VNC server function will be supported by the GT21 wide model soon.

Recommended catalogs and leaflets

Various catalogs and leaflets are available. For details, please contact your local sales office.



Graphic Operation Terminal
GOT2000 Series
L(NA)08270ENG



GOT2000 Series
Ethernet communication unit
L(NA)08424ENG

HMI/GOT Screen Design Software

Professional Designs in Just a Few Clicks



This integrated software is used to create professional screen designs for GOTs. Developed with the concepts of "Simplicity", "Sleekness", and "User-friendliness" in mind, this is a powerful tool that pushes boundaries and delivers endless design possibilities.

**GOT Screen Design Software
MELSOFT GT Works3+plus**

Trademarks and registered trademarks

GOT, MELSOFT, CC-Link, CC-Link IE are either trademarks or registered trademarks of Mitsubishi Electric Corporation in Japan and other countries.

ETHERNET is a registered trademark of Xerox Corp.

VNC is a registered trademark of RealVNC Ltd. in the United States and other countries.

SD and SDHC Logos are registered trademarks or trademarks of SD-3C, LLC.

Other product and company names are either trademarks or registered trademarks of their respective owners.

Precautions before use

This publication explains the typical features and functions of the products herein and does not provide restrictions or other information related to usage and module combinations. Before using the products, always read the product user manuals. Mitsubishi Electric will not be held liable for damage caused by factors found not to be the cause of Mitsubishi Electric; opportunity loss or lost profits caused by faults in Mitsubishi Electric products; damage, secondary damage, or accident compensation, whether foreseeable or not, caused by special factors; damage to products other than Mitsubishi Electric products; or any other duties.

⚠ For safe use

- To use the products given in this publication properly, always read the relevant manuals before beginning operation.
- The products have been manufactured as general-purpose parts for general industries, and are not designed or manufactured to be incorporated in a device or system used in purposes related to human life.
- Before using the products for special purposes such as nuclear power, electric power, aerospace, medicine or passenger-carrying vehicles, consult with Mitsubishi Electric.
- The products have been manufactured under strict quality control. However, when installing the products where major accidents or losses could occur if the products fail, install appropriate backup or fail-safe functions in the system.

Global FA Centers



China Mainland

Shanghai FA Center

Mitsubishi Electric Automation (China) Ltd.
10F, Mitsubishi Electric Automation Center, No.1386 Hongqiao Road, Changning District, Shanghai, China
Tel: +86-21-2322-3030 / Fax: +86-21-2322-3000(9611#)

Beijing FA Center

Mitsubishi Electric Automation (China) Ltd. Beijing Branch
Unit 901, 9F, Office Tower 1, Henderson Centre, 18 Jianguomennei Avenue, Dongcheng District, Beijing, China
Tel: +86-10-6518-8830 / Fax: +86-10-6518-2938

Tianjin FA Center

Mitsubishi Electric Automation (China) Ltd. Tianjin Branch
Room 2003 City Tower, No.35, Youyi Road, Hexi District, Tianjin, China
Tel: +86-22-2813-1015 / Fax: +86-22-2813-1017

Guangzhou FA Center

Mitsubishi Electric Automation (China) Ltd. Guangzhou Branch
Room 1609, North Tower, The Hub Center, No.1068, Xingang East Road, Haizhu District, Guangzhou, China
Tel: +86-20-8923-6730 / Fax: +86-20-8923-6715

Taiwan

Taipei FA Center

SETSUYO ENTERPRISE CO., LTD.
3F, No.105, Wugong 3rd Road, Wugu District, New Taipei City 24889, Taiwan
Tel: +886-2-2299-9917 / Fax: +886-2-2299-9963

Korea

Korea FA Center

Mitsubishi Electric Automation Korea Co., Ltd.
7F-9F, Gangseo Hangang Xi-tower A, 401, Yangcheon-ro, Gangseo-Gu, Seoul 07528, Korea
Tel: +82-2-3660-9632 / Fax: +82-2-3663-0475

ASEAN

ASEAN FA Center

Mitsubishi Electric Asia Pte. Ltd.
307 Alexandra Road, Mitsubishi Electric Building, Singapore 159943
Tel: +65-6470-2480 / Fax: +65-6476-7439

Indonesia

Indonesia FA Center

PT. Mitsubishi Electric Indonesia Cikarang Office
Jl. Kenari Raya Blok G2-07A Delta Silicon 5, Lippo Cikarang - Bekasi 17550, Indonesia
Tel: +62-21-2961-7797 / Fax: +62-21-2961-7794

Vietnam

Hanoi FA Center

Mitsubishi Electric Vietnam Co., LTD. Ha Noi Office
6th Floor, Detech Tower, 8 Ton That Thuyet Street, My Dinh 2 Ward, Nam Tu Liem District, Hanoi City, Vietnam
Tel: +84-4-3937-8075 / Fax: +84-4-3937-8076

Ho Chi Minh FA Center

Mitsubishi Electric Vietnam Co., LTD. Ho Chi Minh Head Office
Unit 01-04, 10th Floor, Vincom Center, 72 Le Thanh Ton Street, District 1, Ho Chi Minh City, Vietnam
Tel: +84-8-3910-5945 / Fax: +84-8-3910-5947

Thailand

Thailand FA Center

Mitsubishi Electric Factory Automation (Thailand) Co., Ltd.
12th Floor, SV. City Building, Office Tower 1, No.896/19 and 20 Rama 3 Road, Kwaeng Bangpongpan, Khet Yannawa, Bangkok 10120, Thailand
Tel: +66-2682-6522 to 31 / Fax: +66-2682-6020

India

India Pune FA Center

Mitsubishi Electric India Pvt. Ltd. Pune Branch
Emerald House, EL-3, J Block, M.I.D.C., Bhosari, Pune - 411026, Maharashtra, India
Tel: +91-20-2710-2000 / Fax: +91-20-2710-2100

India Gurgaon FA Center

Mitsubishi Electric India Pvt. Ltd. Gurgaon Head Office
2nd Floor, Tower A & B, Cyber Greens, DLF Cyber City, DLF Phase - III, Gurgaon - 122002, Haryana, India
Tel: +91-124-463-0300 / Fax: +91-124-463-0399

India Bangalore FA Center

Mitsubishi Electric India Pvt. Ltd. Bangalore Branch
Prestige Emerald, 6th Floor, Municipal No.2, Madras Bank Road, Bangalore - 560001, Karnataka, India
Tel: +91-80-4020-1600 / Fax: +91-80-4020-1699

India Chennai FA Center

Mitsubishi Electric India Pvt. Ltd. Chennai Branch
Citilights Corporate Centre No.1, Vivekananda Road, Srinivasa Nagar, Chetpet, Chennai - 600031, Tamil Nadu, India
Tel: +91-44-4554-8772 / Fax: +91-44-4554-8773

India Ahmedabad FA Center

Mitsubishi Electric India Pvt. Ltd. Ahmedabad Branch
B/4, 3rd Floor, SAFAL Profitaire, Corporate Road, Prahaladnagar, Satellite, Ahmedabad - 380015, Gujarat, India
Tel: +91-79-6512-0063 / Fax: -

Americas

North America FA Center

Mitsubishi Electric Automation, Inc.
500 Corporate Woods Parkway, Vernon Hills, IL 60061, U.S.A.
Tel: +1-847-478-2100 / Fax: +1-847-478-2253

Mexico

Mexico FA Center

Mitsubishi Electric Automation, Inc. Mexico Branch
Mariano Escobedo #69, Col. Zona Industrial, Tlalhepanlta Edo. Mexico, C.P.54030
Tel: +52-55-3067-7511 / Fax: -

Brazil

Brazil FA Center

Mitsubishi Electric do Brasil Comercio e Servicos Ltda.
Avenida Adelino Cardana, 293, 21 andar, Bethaville, Barueri SP, Brasil CEP 06401-147
Tel: +55-11-4689-3000 / Fax: +55-11-4689-3016

Europe

Europe FA Center

Mitsubishi Electric Europe B.V. Polish Branch
ul. Krakowska 50, 32-083 Balice, Poland
Tel: +48-12-630-47-00 / Fax: +48-12-630-47-01

Germany FA Center

Mitsubishi Electric Europe B.V. German Branch
Mitsubishi-Electric-Platz 1, 40882 Ratingen, Germany
Tel: +49-2102-486-0 / Fax: +49-2102-486-1120

UK FA Center

Mitsubishi Electric Europe B.V. UK Branch
Travellers Lane, Hatfield, Hertfordshire, AL10 8XB, U.K.
Tel: +44-1707-28-8780 / Fax: +44-1707-27-8695

Italy FA Center

Mitsubishi Electric Europe B.V. Italian Branch
Centro Direzionale Colleoni - Palazzo Sirio, Viale Colleoni 7, Agrate Brianza (MB), Italy
Tel: +39-039-60531 / Fax: +39-039-6053-312

Czech Republic FA Center

Mitsubishi Electric Europe B.V. Czech Branch
Avenir Business Park, Radlicka 751/113e, 158 00 Praha5, Czech Republic
Tel: +420-251-551-470 / Fax: +420-251-551-471

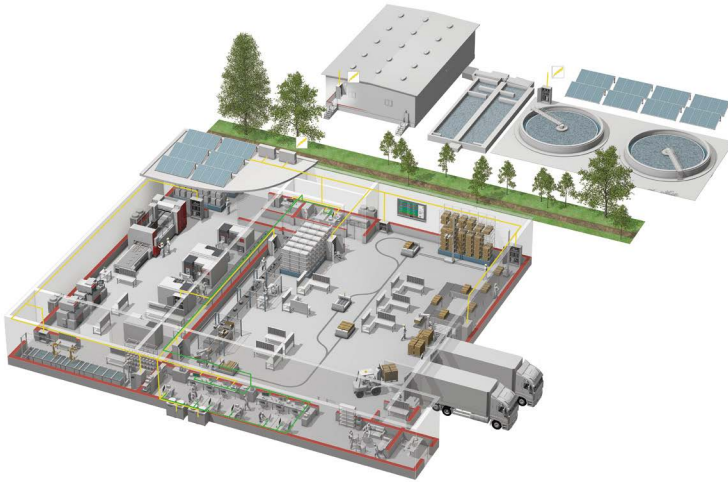
Russia FA Center

Mitsubishi Electric (Russia) LLC St. Petersburg Branch
Piskarevsky pr. 2, bld 2, lit "Sch", BC "Benua", office 720; 195027, St. Petersburg, Russia
Tel: +7-812-633-3497 / Fax: +7-812-633-3499

Turkey FA Center

Mitsubishi Electric Turkey A.S. Umraniye Branch
Serifali Mahallesi Nutuk Sokak No:5, TR-34775 Umraniye / Istanbul, Turkey
Tel: +90-216-526-3990 / Fax: +90-216-526-3995

YOUR SOLUTION PARTNER



Mitsubishi Electric offers a wide range of automation equipment from PLCs and HMIs to CNC and EDM machines.

A NAME TO TRUST

Since its beginnings in 1870, some 45 companies use the Mitsubishi name, covering a spectrum of finance, commerce and industry.

The Mitsubishi brand name is recognized around the world as a symbol of premium quality.

Mitsubishi Electric Corporation is active in space development, transportation, semi-conductors, energy systems, communications and information processing, audio visual equipment and home electronics, building and energy management and automation systems, and has 237 factories and laboratories worldwide in over 121 countries.

This is why you can rely on Mitsubishi Electric automation solution - because we know first hand about the need for reliable, efficient, easy-to-use automation and control in our own factories.

As one of the world's leading companies with a global turnover of over 4 trillion Yen (over \$40 billion), employing over 100,000 people, Mitsubishi Electric has the resource and the commitment to deliver the ultimate in service and support as well as the best products.



Low voltage: MCCB, MCB, ACB



Medium voltage: VCB, VCC



Power monitoring, energy management



Compact and Modular Controllers



Inverters, Servos and Motors



Visualisation: HMIs



Numerical Control (NC)



Robots: SCARA, Articulated arm



Processing machines: EDM, Lasers, IDS



Transformers, Air conditioning, Photovoltaic systems

* Not all products are available in all countries.

Global Partner. Local Friend.

GOT2000 *Wide* Graphic Operation Terminal

The release date varies depending on the product and your region. For details, please contact your local sales office.

The actual color may differ slightly from the pictures in this catalog. The actual display may differ from what are shown on GOT screen images.

MITSUBISHI ELECTRIC CORPORATION

HEAD OFFICE: TOKYO BLDG., 2-7-3, MARUNOUCHI, CHIYODA-KU, TOKYO 100-8310, JAPAN
NAGOYA WORKS: 1-14, YADA-MINAMI 5, HIGASHI-KU, NAGOYA, JAPAN

Country/Region Sales office

USA+1-847-478-2100
Mexico+52-55-3067-7511
Brazil+55-11-4689-3000
China+86-21-2322-3030
Taiwan+886-2-2299-2499
Korea+82-2-3660-9530

Singapore+65-6473-2308
Thailand+66-2682-6522 to 31
Indonesia+62-21-3192-6461
Vietnam+84-8-3910-5945
India+91-20-2710-2000
Australia+61-2-9684-7777

Germany+49-2102-486-0
UK+44-1707-28-8780
Italy+39-039-60531
Spain+34-935-65-3131
France+33-1-55-68-55-68
Czech+420-251-551-470

Turkey+90-216-526-3990
Poland+48-12-347-65-00
Russia+7-812-633-3497
South Africa+27-11-658-8100