

RoHS



GSGX/GSGXHT Series Right Angle Ganged Jack

Features



- Available in up to 12 Ports
- Available Fully Shielded for Category 5 Applications
- Reflow Compatible Through Hole Design
- CSA/NRTL Certified File No. LR78160

Performance Specifications

Materials and Finish

Housing Material

GSGX - PBT Thermoplastic, Glass Filled, UL 94V-0 Rated,
Black Color

GSGXHT - High Temperature Thermoplastic, UL 94V-0 Rated,
Black Color

Shield Material

Copper Alloy, Nickel Plated

Contact Material

Phosphor Bronze

Electrical Characteristics

Insulation Resistance

500 Megohms Min.

Dielectric Withstanding Voltage

1000V RMS, 60 Hz

Contact Resistance

20 milliohms Max.

Current Rating

1.5A

Voltage Rating

125V DC

Operating Temperature

-40°C to +85°C

Durability

500 Mating Cycles Min.

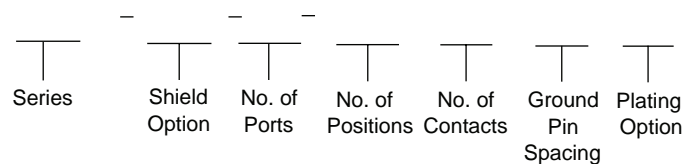
MODULAR JACKS AND PLUGS

GSGX/GSGXHT Series

Documentation & Ordering Information

Kycon Part #

Part Number Builder



Series

GSGX - Right Angle Ganged Jack

GSGXHT - High Temperature Right Angle Ganged Jack

Shield Options

N - Non-Shielded

NS - Shielded

Number of Ports

2 - 2 Port

4 - 4 Port

5 - 5 Port

6 - 6 Port

8 - 8 Port

10 - 10 Port

12 - 12 Port

Number of Positions/Contacts

88 - 8 Positions / 8 Contacts

Ground Pin Spacing (Shielded Only)

Blank - 3.68 mm Ground Pin Spacing

4.57 - 4.57mm Ground Pin Spacing

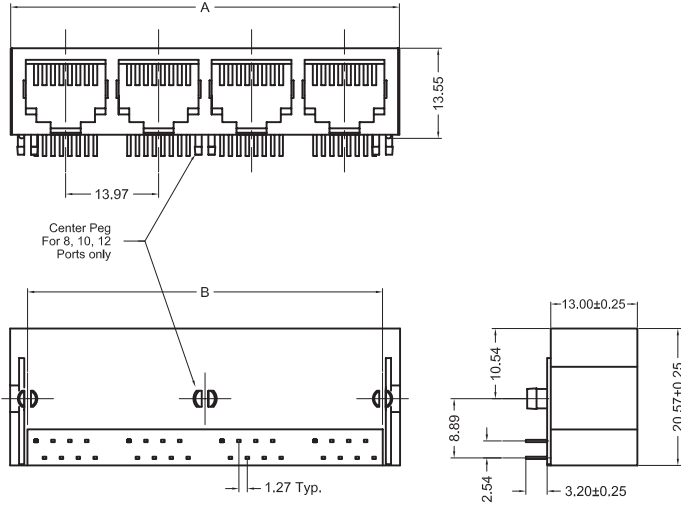
Plating Option

Blank - Standard

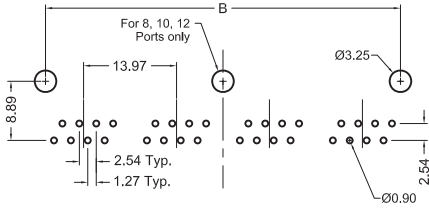
50 - 50µ" Gold Plating

*See next page for dimensions

GSGX-N-x-88
Dimensions in mm



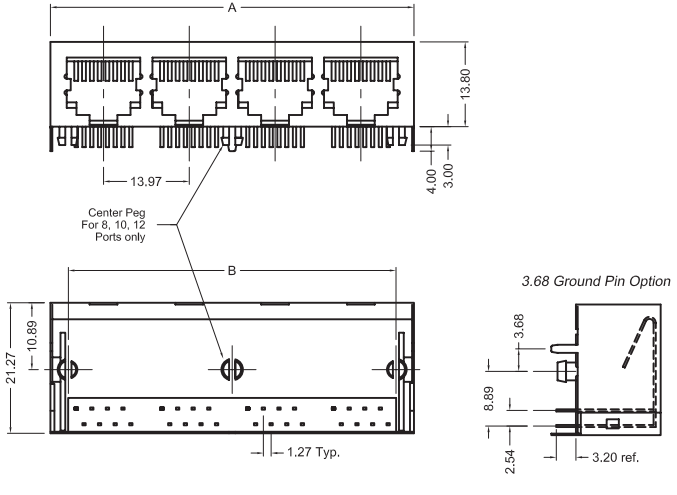
Recommended PCB Layout (Top View)



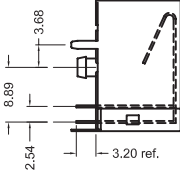
Dimensions			
	mm		
# of Ports	A	B	Style of Board Peg
2	30.48	25.40	Snap-In
4	58.42	53.34	Snap-In
5	72.39	67.31	Diamond*
6	86.36	81.28	Snap-In
8	114.30	109.22	Snap-In
10	142.24	137.16	Diamond**
12	170.18	165.10	Diamond**

*Snap-In available with min. quantity. Contact Kycon
**Outer pegs are diamond, center peg is snap-in style

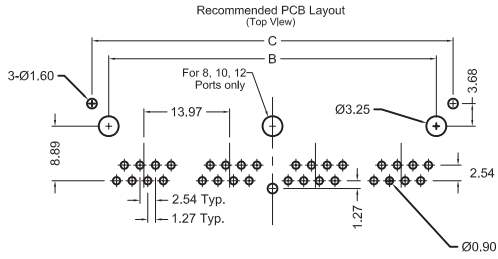
GSGX-NS-x-88
Dimensions in mm



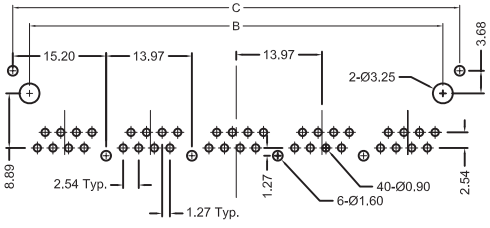
3.68 Ground Pin Option



Recommended PCB Layout (Top View)



Special PCB Layout for GSGX-NS-5-88 (Top View)



Dimensions (mm)				
# of Ports	A	B	C	Style of Board Peg
2	31.12	25.40	30.87	Snap-In***
4	59.06	53.34	58.81	Snap-In***
5	73.03	67.31	72.78	Diamond*
6	87.00	81.28	86.75	Snap-In***
8	114.94	109.22	114.69	Snap-In***
10	142.88	137.16	142.63	Diamond**
12	170.82	165.10	170.57	Diamond**

*Snap-In available with min. quantity. Contact Kycon
**Outer pegs are diamond, center peg is snap-in style
*** 4.57 Ground Pin option available