





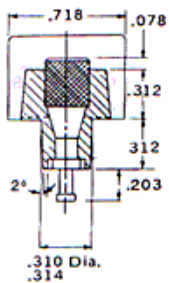
## FEATURES

- **SUPERIOR CONSTRUCTION** – All terminals are molded to place with precision screw machined brass inserts which will not twist, virtually eliminating broken joints while providing a full mechanical thread system.
- **IDEAL FOR SUB-CHASSIS OR THRU-PANEL APPLICATION** – No costly insulation or mounting set-up since feed thru insulators are an integral part of the moldings. Feature provides a full 1/4 inch terminal to ground clearance even thru 1/16 inch chassis.
- **DURABLE BASE MATERIAL** – Made of black thermo-set phenolic, or high-impact, break-resistant thermoplastic.
- **ELECTRICAL RATING** – 20 amps/up to 600 volts.
- **COMPACT BARRIER-TYPE DESIGN** – Especially suited for electronic and control applications.
- **FEED-THRU, PRINTED CIRCUIT OR SURFACE CONNECTION** – One thru 26 terminals on 7/16 inch center-to-center spacing.
- **BROAD WIRE RANGE** - UL recognized for no. 22AWG to No. 12AWG, depending on type of external contact designated with CSA requiring use of lugs on wire larger than No. 16AWG.
- **TERMINAL FLEXIBILITY** – External terminals available in three screw sizes with various internal terminal types.
- **RECOGNITION AND LISTING** – UL recognized and CSA certified.
- **METRIC SCREWS** – Available in GBPX and GFTX Series for export applications.

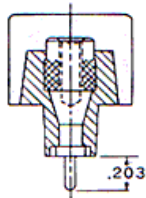
 Recognized under the Components Program of Underwriters Laboratories, Inc. Standard 1059, Guide No. XCFR2, File No. E62557.

 Guide No. 184-N-90, Report No. LR39186-1. COMPLIES WITH IEC 947-7-1.

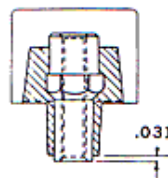
## VARIATIONS



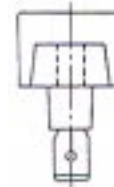
**GFTX**  
Turret-type  
solder pin



**GFTPX**  
.062" Dia.  
Printed  
Circuit  
Pin

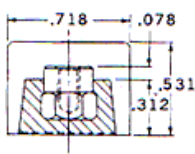


**GFTSX**  
No.6-32  
machine  
screw

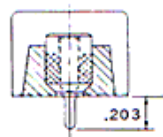


**NOTE:**  
Consult  
Factory for  
Minimums

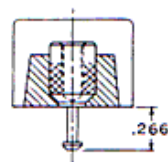
**GFTZLX**  
.250 X  
.031 QC  
Terminal



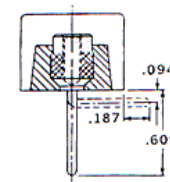
**GBSX**  
Closed-back  
design



**GBPX**  
.062" Dia.  
Printed  
Circuit  
Pin



**GBFTX**  
Turret-  
Type  
solder pin



**GBPNX**  
.062" Dia  
90Degree  
printed  
circuit pin

**NOTE:** Standard bend dimension shown. Other bend dimensions are available.

## ENGINEERING SPECIFICATIONS

**Center-to-Center Spacing:** 7/16" (11.11 mm)

**Wire Range:** No. 22AWG to No. 12AWG. (CSA requires use of lugs on wire larger than No. 16AWG.)

**Number of Terminals:** 1 thru 26

**Voltage Rating:** CSA – 300 volts  
 UL – \*150 volts – General Industrial  
           \*\*250 volts – Commercial Appliances  
           300 volts – Limited Energy Applications  
           600 volts – Limited Energy Applications

\*GFT, GFTP, GFTS, GFTAL rated for 300 volts.

\*\* GFTQALX rated for 125 volts.

**Tightening Torque:** Wire Binding Screw 9 in.-lb.  
 Wire Clamp 9 in.-lb.

**Current Rating:** 20 amps UL and CSA.

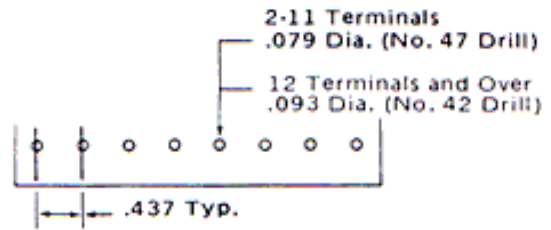
**Housing: "X" Grade**

Material:	Phenolic	Polyphenylene Oxide
Continuous Use Temp.: (UL Index)	150° C (302° F)	110° C (230° F)
Flammability Rating:	94V-0	94V-0
Water Absorption: (24 hrs. % wt. gain)	.06%	.05%
Chemical Resistance:	Resistant to most organic solvents.	Resistant to inorganic bases and acids – for organic substances contact factory for specific resistance.

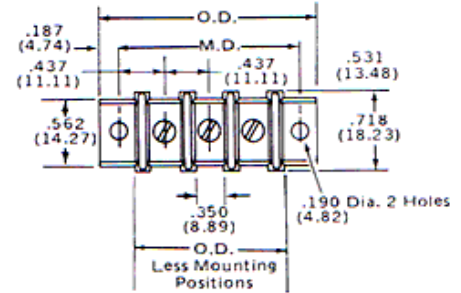
<b>Breakdown Voltage:</b>	<b>GFT</b>	<b>GB</b>
Terminal - Terminal:	3,900V Typ.	5,000 Typ.
Terminal - Ground:	5,800V Typ.	7,900 Typ.

NOTE: Specifications contained herein are subject to change without notice.

## PC BOARD DRILLING DIMENSIONS



## DIMENSIONS



No. of Terminals	Mounting Dimensions		Overall Dimensions		Less Mounting Positions	
	Inches	Metric (mm)	Inches	Metric (mm)	Inches	Metric (mm)
1	.875	22.22	1.250	31.75	.562	14.28
2	1.312	33.33	1.687	42.86	1.000	25.40
3	1.750	44.45	2.125	53.97	1.437	36.51
4	2.187	55.56	2.562	65.08	1.875	47.62
5	2.625	66.67	3.000	76.20	2.312	58.73
6	3.062	77.78	.3437	87.31	2.750	69.85
7	3.500	88.90	3.875	98.42	3.187	80.96
8	3.937	100.01	4.312	109.53	3.625	92.07
9	4.375	111.12	4.750	120.65	4.062	103.18
10	4.812	122.23	5.187	131.76	4.500	114.30
11	6.250	133.35	5.625	142.87	4.937	125.41
12	5.687	144.46	6.062	153.98	5.375	136.52
13	6.125	155.57	6.500	165.10	5.812	147.63
14	6.562	166.68	6.937	176.21	6.250	158.75
15	7.000	177.80	7.375	187.32	6.687	169.86
16	7.437	188.91	7.812	198.43	7.125	180.97
17	7.875	200.02	8.250	209.55	7.562	192.08
18	8.312	211.13	8.687	220.66	8.000	203.20
19	8.750	222.25	9.125	231.77	8.437	214.31
20	9.187	233.36	9.562	242.88	8.875	225.42
21	9.625	244.47	10.000	254.00	9.312	236.53
22	10.062	255.58	10.437	265.11	9.750	247.65
23	10.500	266.70	10.875	276.22	10.187	258.76
24	10.937	277.81	11.312	287.33	10.625	269.87
25	11.375	288.92	11.750	298.45	11.062	280.98
26	11.812	300.03	12.187	309.56	11.500	292.10

Dimensions shown are ±0.030".

## INTERNAL TERMINAL DESIGNATIONS

GFTP	Printed circuit board design with .062" dia. tin-plated brass turret-type solder pin.
GFT	Tin-plated brass turret-type solder pin.
GFTS	Unplated brass insert. No. 6-32 plated steel screw.
GBS	Unplated brass insert. Closed-back design which can be mounted on metal surface with no additional insulation required.
GBP	Printed circuit board design with .062" dia. tin plated brass pin.
GBFT	Tin-plated brass turret-type solder pin.
GFTQX	.250 x .031 tin-plated brass quick connect tab terminal.

## EXTERNAL TERMINAL DESIGNATIONS

GBFT, GBP	Screw terminal with No. 6-32 plated steel* screw accepting up to No. 12AWG wire.
GBS, GFT, GFTP	
GBFTA, GBPA, GBSA, GFTA, GFTSA, GFTPA	
GFTW, GBFTW, GBPW, GFTPW, GBSW, GFTSW	Wire clamp captivated to a No. 6-32 plated steel screw accepting No. 20AWG to No. 12AWG.

\* Other materials available – contact factory or your local representative for additional information.

# CURTIS SERIES GFT/GB

## HOW TO ORDER

GB Series terminal blocks are ordered by listing a composite number made up of the model designation followed by the number of poles required for the application. Example: Type GBP 10-pole block becomes stock number GBP-10.

Suffixes are used as follows:

- A Denotes model with No. 8-32 external screw terminal
- W Denotes model with wire clamp replacing external screw terminal
- C Denotes model less mounting positions
- X Denotes model with thermoplastic molding

To specify quick-connect terminals, simply add the style number required. May be purchased factory-assembled or as customer-installed accessory.

The GBP-10 described above – made from thermo-set phenolic – and with wire clamp, less mounting positions thus converts to stock number GBPWC-10.

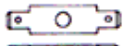
## ACCESSORIES

### QUICK-CONNECT TERMINALS

GB/GFT – Available with .250" x .032" quick-connect tabs of tin-plated brass, held in place by terminal screws. Nine styles...one to six terminations per pole. Factory-assembled or customer-installed. Last digit of part number corresponds to previous style numbers.



Double Sided



TB21



TB22



TB23

Single Sided



TB24



TB25



TB26

Double Sided



TB27



TB28



TB29

### WIRE CLAMPS

GB/GFT – Wire clamp captivated to No. 6-32 screw eliminates need for lugs. Accepts to No. 12AWG wire. May be ordered by factory installed (-w suffix) or loose as Part No. 58787120.



### MARKING STRIPS

GB/GFT – Pre-punched black fiber...mount under block. May be imprinted to customer specifications. To order, specify:  
Part No. 267A19-1 thru 26 (with mounting hole);  
Part No. 267A218-1 thru 26 (less mounting hole).



### COVERS

CB/CFT – Rigid .030" thick self-extinguishing vinyl. Black matte-finished on both sides. May double as marking strip when imprinted with white ink. Complete with spring clips for attaching to mounting positions.  
Part No. 267B86-1 thru 26 terminals.



### TERMINAL BLOCK JUMPERS

GB/GFT – Plated brass in two styles. Type 267-A28 is designed to jump two adjacent terminals as it is channeled to cross over the barrier top. "Rooster comb" design to Type 267-A42 permits connections of two to 18 poles. To order specify:  
Part No. 267-A42 (Plus no. of poles)  
Example: 267-A42-18.



### TINNERMAN NUT

GFT – for special mounting of terminal blocks less mounting positions. Part No. TN-437.

