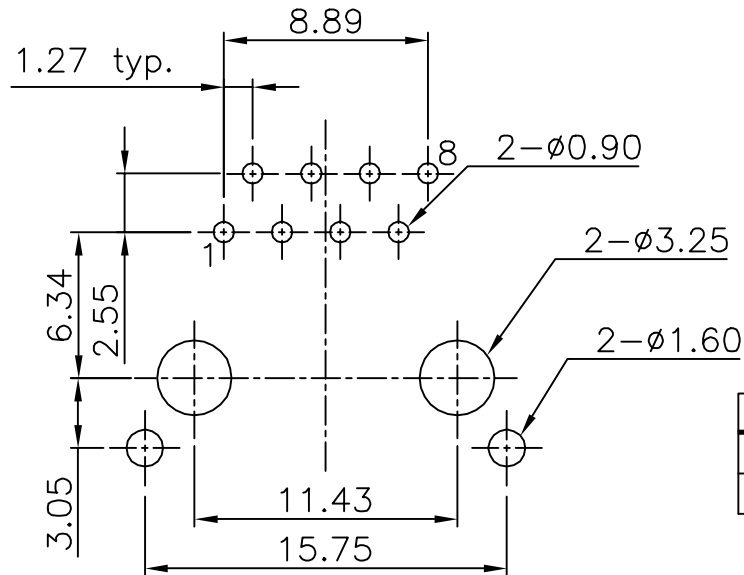
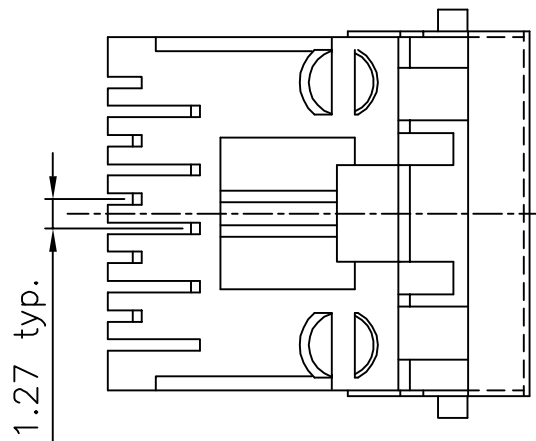


PCB LAYOUT/TOP VIEW



Materials and Finish

Housing Material-
PBT Thermoplastic
UL 94V-0 Rated
Color: Black

Shield Material-
Nickel Plated Copper Alloy

Contact Material-
Phosphor Bronze

Contact Plating Options-
Standard: 0.0001" Nickel
Plating, Selective Plating
0.000015" Gold on Contact
Area
50: 0.0001" Nickel Plating,
Selective Plating 0.000050"
Gold on Contact Area to
Comply with FCC Requirements
Under No. 47 C.F.R. Part 68,
Subpart F

Electrical Characteristics

Insulation Resistance-
500 Megohms Min.

Dielectric Withstanding Voltage-
1000V rms, 60Hz

Contact Resistance-
20 milliohms Max.

Current Rating-
1.5 Amps

| Part Number | Contact Area Plating Finish |
|-------------|-----------------------------|
| GDL-S-88 | 15u" Gold (standard) |
| GDL-S-88-50 | 50u" Gold (50 option) |

CSA NRTL/C Certified File No. LR78160

| REVISION | DATE | DESCRIPTION | DRAWN BY | CHECKED BY | UNITS |
|----------|----------|-----------------|------------|-------------|----------|
| B3 | 12/11/00 | Modify Plns | K. Wallace | | mm |
| B4 | 8/16/01 | per ECD #01-047 | REVISED BY | APPROVED BY | DATE |
| C1 | 4/9/02 | per ECD #01-066 | C. Leiva | | 11/29/00 |

GDL-S-88

Modular Jack, Right angle

8 Pos, 8 Contacts, shielded

