

G3G133-DD05-02

EC centrifugal fan

forward curved, single inlet
with housing (without flange)



ebm-papst Mulfingen GmbH & Co. KG

Bachmühle 2

74673 Mulfingen

Phone: +49 7938 81-0

Fax: +49 7938 81-110

www.ebmpapst.com

info1@de.ebmpapst.com

Nominal data

Type	G3G133-DD05-02	
Motor	M3G055-BD	
Nominal voltage	[VDC]	230
Frequency	[Hz]	50/60
Type of data definition		ml
Speed	[min ⁻¹]	1925
Power input	[W]	38
Current draw	[A]	0.3
Max. ambient temperature	[°C]	60

ml = max. load · me = max. efficiency · rfa = running at free air · cs = customer specs · cu = customer unit
Subject to alterations

EC centrifugal fan

forward curved, single inlet
with housing (without flange)

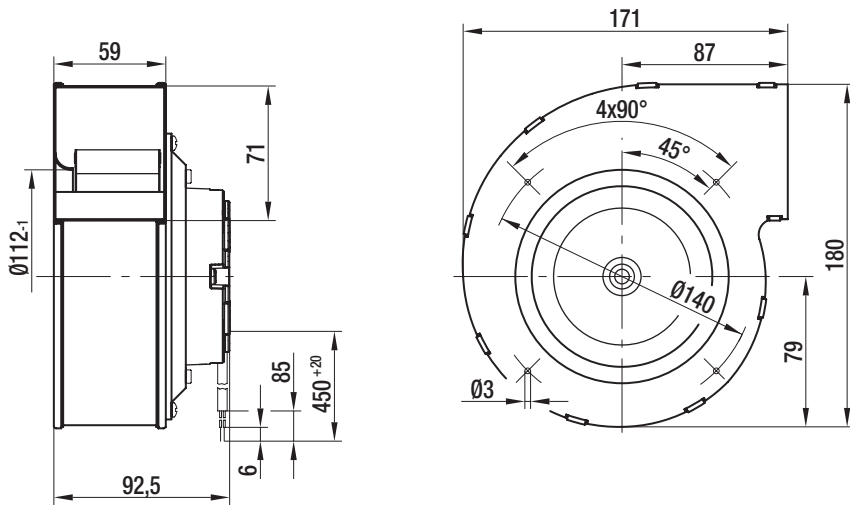
Technical features

Leakage current	<= 3,5 mA
General description	Integrated electronics
Size	133 mm
Operation mode	Continuous operation (S1)
Direction of rotation	Clockwise, seen on rotor
Mounting position	Any
Insulation class	"B"
Cable exit	Variable
Bearing motor	Ball bearing
Mass	1.5 kg
Material of electronics housing	Rotor: Galvanized
Material of impeller	Hot-dip galvanized sheet steel
Motor protection	Locked-rotor protection
Type of protection	IP 44
Protection class	I
Technical features	Control input 0-10 VDC / PWM, output 10 VDC max. 1.1 mA, tach output, locked rotor protection
Approval	GOST

EC centrifugal fan

forward curved, single inlet
with housing (without flange)

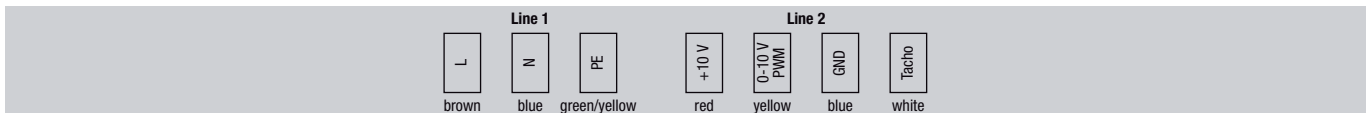
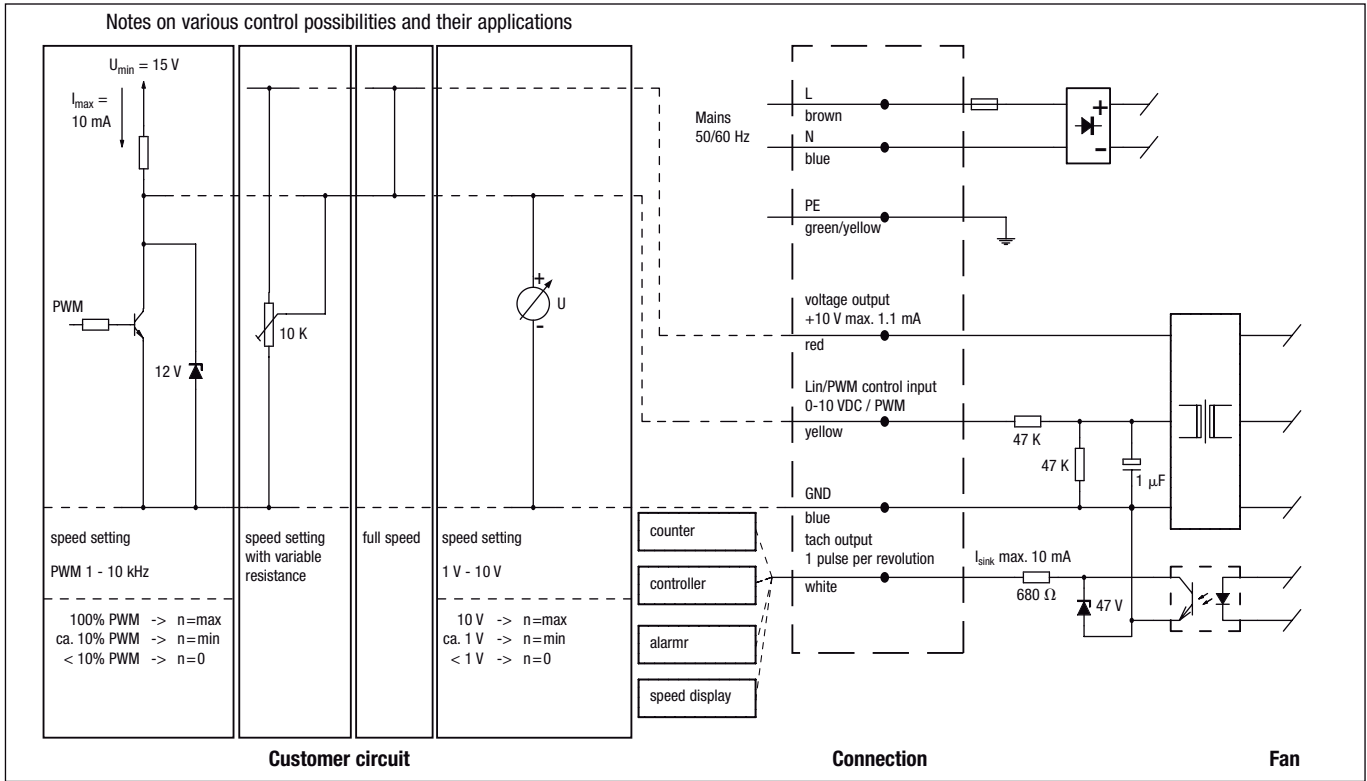
Product drawing



EC centrifugal fan

forward curved, single inlet
with housing (without flange)

Connection screen

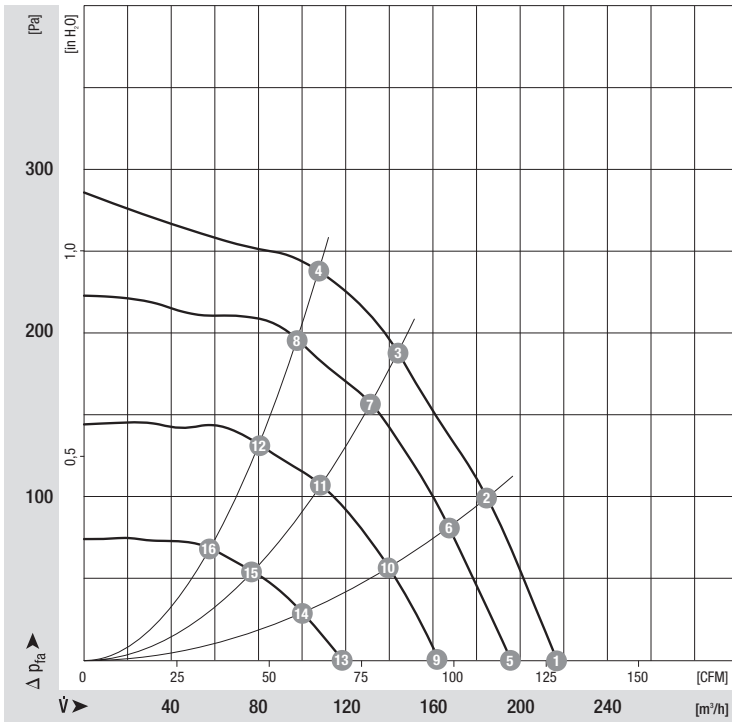


Line	Signal	Colour	Assignment / function	Line	Signal	Colour	Assignment / function
1	L	brown	Mains 50/60 Hz, phase	2	+10 V	red	Voltage output +10 V max. 1.1 mA
	N	blue	Mains 50/60 Hz, neutral		0-10 V / PWM	yellow	Control input
	PE	green/yellow	Protective earth		GND	blue	GND
					Tacho	white	Tach output: pulses per revolution

EC centrifugal fan

forward curved, single inlet
with housing (without flange)

Charts: Air flow



Measured values

	n	P ₁	I	η_{TL}
	[min ⁻¹]	[W]	[A]	[%]
1	1925	38	0.30	
2	2070	34	0.25	45
3	2210	21	0.20	53
4	2330	21	0.15	51
5	1780	30	0.25	
6	1870	26	0.20	45
7	1995	21	0.15	53
8	2120	17	0.15	51
9	1495	18	0.15	
10	1570	16	0.15	45
11	1640	13	0.10	53
12	1730	10	0.10	51
13	1100	9	0.10	
14	1140	8	0.10	45
15	1200	7	0.10	53
16	1250	6	0.10	51