



# G201X STEP MOTOR DRIVE

REV 5: SEPTEMBER 13, 2010

GECKODRIVE, INC.  
14662 FRANKLIN AVE  
SUITE E  
TUSTIN, CA 92780  
(714) 832-8874

Thank you for purchasing the G201X drive. The G201X microstep drive is warranted to be free of manufacturing defects for 1 year from the date of purchase. Also anyone who is dissatisfied with it or is unable to make it work will be cheerfully refunded the purchase price if the G201X is returned within 15 days of the purchase date.

## PLEASE READ FIRST BEFORE USING THE G201X

Before beginning, be sure to have a suitable step motor, a DC power supply suitable for the motor and a current set resistor. The motor's rated phase current must be between 0 Amps and 7 Amps. The power supply voltage must be between 4 times and 20 times the motor's rated voltage. The current set resistor may be a 1/4 Watt, 5% part. Finally have a STEP and DIRECTION pulse source available.

### DIFFERENCES BETWEEN THE G201X AND G201

The G201X is 100% backwards compatible with the G201 and G210. It has several new features and performance enhancements:

- 1.) STEP and DIRECTION is +3.3VDC and +5VDC compatible at 2.5mA
- 2.) Recirculate mode during STANDBY greatly reduces motor heating while stopped
- 3.) No external 470uF capacitor needed
- 4.) Power-on RESET
- 5.) Direction is clocked in on the active step pulse edge
- 6.) No internal jumpers, no current set resistor, DIP switch settings
- 7.) Low motor heating while stopped
- 8.) Universal step and direction COMMON

### G201X TERMINAL WIRING

The G201X uses a 2-piece modular main connector. The connector is split in two pieces; terminals 1 through 6 (power supply and motor leads) and terminals 7 through 12 (control interface). Each can be removed separately by pulling the connector body upwards and off of the mating header pins on the G201X. The connectors must initially be removed to mount the G201X to a heatsink or chassis.

- |                    |  |
|--------------------|--|
| <b>TERMINAL 1</b>  | Power Ground<br>Connect the negative (black) lead of your power supply to this terminal.                                 |
| <b>TERMINAL 2</b>  | Power (+)<br>Connect the positive (red) lead of your power supply to this terminal. It must be between +18VDC to +80VDC. |
| <b>TERMINAL 3</b>  | Motor Phase A<br>Connect one end of your "Phase A" motor winding here.   |
| <b>TERMINAL 4</b>  | Motor Phase /A<br>Connect the other end of your "Phase A" motor winding here.  |
| <b>TERMINAL 5</b>  | Motor Phase B<br>Connect one end of your "Phase B" motor winding here.   |
| <b>TERMINAL 6</b>  | Motor Phase /B<br>Connect the other end of your "Phase B" motor winding here.  |
| <b>TERMINAL 7</b>  | Disable<br>This terminal will force the winding currents to zero when shorted to ground (TERMINAL 12).                   |
| <b>TERMINAL 8</b>  | Direction<br>Connect the DIRECTION signal to this terminal.  |
| <b>TERMINAL 9</b>  | Step<br>Connect the STEP signal to this terminal.  |
| <b>TERMINAL 10</b> | Common<br>Connect the controller's +3.3VDC, +5VDC or GND to this terminal.   |



## G201X STEP MOTOR DRIVE

REV 5: SEPTEMBER 13, 2010

GECKODRIVE, INC.  
14662 FRANKLIN AVE  
SUITE E  
TUSTIN, CA 92780  
(714) 832-8874

**TERMINAL 11** Current Set (OPTIONAL)  
Connect one end of your current set resistor to this terminal.

**TERMINAL 12** Current Set (OPTIONAL)  
Connect the other end of your current set resistor to this terminal.

### POWER SUPPLY HOOKUP

**TERMINAL 1** Power Ground  
Connect the power supply ground to term.1

**TERMINAL 2** Power (+)  
Connect the power supply "+" to this terminal

The power supply voltage must be between 18 VDC and 80 VDC. The maximum power supply current required is 67% of the motor's rated phase current. An unregulated power supply may be used as long as the voltage stays between the limits; keep the ripple voltage to 10% or less for best results. The drive has a 2 second power-on reset time before the motor is energized.

**CAUTION!** Power supply voltage in excess of 80 VDC will damage the G201X.

**CAUTION!** Never put a switch on the DC side of the power supply! This will damage, if not destroy, your drive!

The choice of power supply voltage depends on the high speed performance required of the motor; doubling the voltage doubles the motor's high speed power. In all cases the power supply voltage should be no less than 4 times or no more than 25 times the motor's rated voltage. The motor may not run as smoothly as possible if the power supply voltage is less than 4 times the motor's rated voltage. A power supply voltage greater than 25 times the motor's rated voltage will overheat and damage the motor, even if it is not turning. Motor winding inductance should be 500uH or greater, but generally no more than 7mH.

A more accurate calculation of power supply voltage is to find your motor's inductance, and put it into the following equation.

$$32 * (\sqrt{\text{mH inductance}}) = \text{Power Supply Voltage}$$

If your motor has 2mH of inductance, the equation would look as follows.

$$32 * (\sqrt{2}) = 45.12V$$

### MOTOR CONNECTION

**TERMINAL 3** Phase A  
Connect one motor winding to this terminal

**TERMINAL 4** Phase /A  
Connect the other end of the winding to this terminal

**TERMINAL 5** Phase B  
Connect the other motor winding to this terminal

**TERMINAL 6** Phase /B  
Connect the other end of the winding to this terminal

Connect one motor winding to terminals 3 and 4. Connect the other winding to terminals 5 and 6. Turn the power supply off when connecting or disconnecting the motor. If the motor turns in the wrong direction, reverse the motor winding connections to terminals 3 and 4.

**CAUTION!** Do not short the motor leads to each other or to ground; damage will result to the G201X.

4-wire, 6-wire and 8-wire motor may be used. When 6-wire motors are used, they may be connected in half winding or full winding. This is equivalent to an 8-wire motor connected in parallel or series. If a motor is connected in series or full winding, the motor's phase current rating is half of its parallel or unipolar rating. The choice depends on the high-speed performance required; a parallel-connected motor will provide twice the power of a series-connected motor at the same power supply voltage.



# G201X STEP MOTOR DRIVE

REV 5: SEPTEMBER 13, 2010

GECKODRIVE, INC.  
14662 FRANKLIN AVE  
SUITE E  
TUSTIN, CA 92780  
(714) 832-8874

## DISABLE PIN

**TERMINAL 7** Disable  
This terminal will force the winding currents to zero when shorted to ground (TERMINAL 12).

Shorting this input to ground (term. 7 to 12) forces winding currents to zero and stops all output switching activity. The G201X will continue totalizing step and direction inputs if any are sent. The power supply current drops to less than 15mA. The motor will return to its original position when the disable input is released if no step pulses have been sent and the motor has not been moved more than 2 full steps.

## STEP AND DIRECTION INPUTS

**TERMINAL 8** Direction  
Connect the DIRECTION line to this terminal.

**TERMINAL 9** Step  
Connect the STEP line to this terminal.

**TERMINAL 10** Common  
Connect the controller's +3.3VDC, +5VDC or GND to this terminal.

These inputs are optically isolated from the rest of the drive. Terminal 10 is the common connection for the opto-isolators and must be connected to the +3.3VDC, +5VDC or GND of your indexer or pulse generator.

These inputs are meant to be driven by 3.3V to 5.5V logic capable of sourcing or sinking 2.5mA of current. The minimum logic "0" time is .5uS while the minimum logic "1" time is 3uS. Microstepping occurs on the falling edge of the step input when COMMON is a positive voltage and on the rising edge when COMMON is connected to GND.

## CURRENT SET RESISTOR (OPTIONAL)

**TERMINAL 11** Current Set (OPTIONAL)  
Connect the current set resistor to this terminal.

**TERMINAL 12** Current Set (OPTIONAL)  
Connect the other end of the current set resistor to this terminal.

DIP Switches 1, 2, 3, 4, and 5 must be set to ON if an external current set resistor is used.

This input programs the G201X's current output to the motor windings. The G201X will accommodate motor winding currents from 0A to 7A when using an external current set resistor. Use the following equation to calculate the value, (in kilo-ohms) of the current set resistor:

$$R \text{ (in kilo-ohms)} = 47 * I / (7 - I)$$

Shown are the current set resistor values for motor current in .5A increments.

<b>1.0A</b>	–	<b>7.5K 5% 1/4W</b>
1.5A	–	13K 5% 1/4W
<b>2.0A</b>	–	<b>18K 5% 1/4W</b>
2.5A	–	27K 5% 1/4W
<b>3.0A</b>	–	<b>36K 5% 1/4W</b>
3.5A	–	47K 5% 1/4W
<b>4.0A</b>	–	<b>62K 5% 1/4W</b>
4.5A	–	82K 5% 1/4W
<b>5.0A</b>	–	<b>120K 5% 1/4W</b>
5.5A	–	180K 5% 1/4W
<b>6.0A</b>	–	<b>270K 5% 1/4W</b>
6.5A	–	620K 5% 1/4W
<b>7.0A</b>	–	<b>OPEN 5% 1/4W</b>



## G201X STEP MOTOR DRIVE

REV 5: SEPTEMBER 13, 2010

GECKODRIVE, INC.  
14662 FRANKLIN AVE  
SUITE E  
TUSTIN, CA 92780  
(714) 832-8874

### HEATSINKING

The G201X needs heatsinking for current settings greater than 3 amps. The case temperature (measured on the bottom plate) should not exceed 70 degrees C, and for best life should be kept to 50 degrees or less. Use heatsink compound between the G201X and the heatsink.

**CAUTION!** Current settings above 3 Amps without a heatsink will result in damage to the G201X.

The drive must be heatsinked to a piece of aluminum, preferably with fins and a fan to increase heat dissipation and surface area. Do not screw the drives directly to the door of your control cabinet, as this will typically not provide adequate heatsinking properties.

### OPTION SET SWITCH

The G201X has 3 settable options which are set via the 10 position DIP switch (visible through the aluminum cover). These options are:

#### 1.) Current Set Switches

The current can be set in 0.2A increments using the onboard DIP switch positions SW1, SW2, SW3, SW4, and SW5 or with a current set resistor. If you are using the DIP switch method, be sure to have nothing connected in TERMINALS 11 and 12; if you are using a current set resistor be sure to set SW1, SW2, SW3, SW4 and SW5 to the "ON" position.

#### 2.) Automatic Current Standby

The G201X reduces motor phase current to 50% of the set value when the motor is stopped. This can reduce motor heating up to 4-fold while the motor is not moving. If enabled, this reduction occurs 1 second after the last step pulse is sent to the drive. Full current is restored immediately upon resumption of step pulses. SW9 enables this function when "ON" and disables this function when "OFF".

#### 3.) NEMA-34 and NEMA-42 Motor

Use this option if the drive is to be used with NEMA-34 and NEMA-42 size motors. This option adjusts the midband compensation circuit for optimum performance when using a NEMA-34 and NEMA-42 motors. SW10 enables this function when "OFF" and disables this function when "ON". SW10 should be "ON" when used with NEMA-17 and NEMA-23 motors.

### RESTORING FACTORY DEFAULTS

To restore the G201X to the factory settings set the trimpot to the 11 o'clock position and set SW1-SW10 to "ON".

### DISCLAIMER

CERTAIN APPLICATIONS USING POWER PRODUCTS MAY INVOLVE POTENTIAL RISKS OF DEATH, PERSONAL INJURY OR SEVERE DAMAGE TO PROPERTY. GECKODRIVE INC. PRODUCTS ARE NOT DESIGNED, AUTHORIZED OR WARRANTED TO BE SUITABLE FOR USE IN LIFE-SUPPORT DEVICES OR OTHER CRITICAL APPLICATIONS. INCLUSION OF GECKODRIVE INC. PRODUCTS IN SUCH APPLICATIONS IS UNDERSTOOD TO BE FULLY AT THE PURCHASER'S OWN RISK

In order to minimize risks associated with the purchaser's application, adequate design and operating safeguards must be provided by the purchaser to minimize inherent or procedural hazards. GECKODRIVE INC. assumes no liability for applications assistance or the purchaser's product design. GECKODRIVE INC. does not warrant or represent that any license, either express or implied, is granted under any patent right, copyright or other intellectual property right of GECKODRIVE INC.

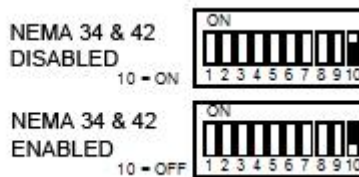
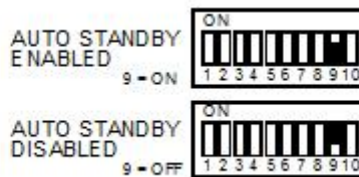
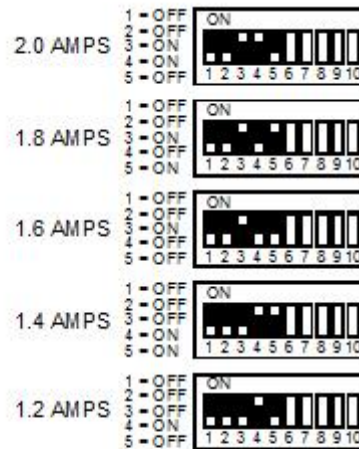
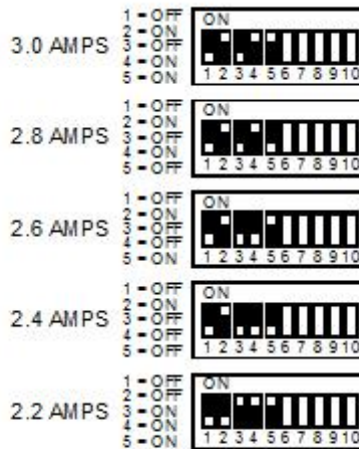
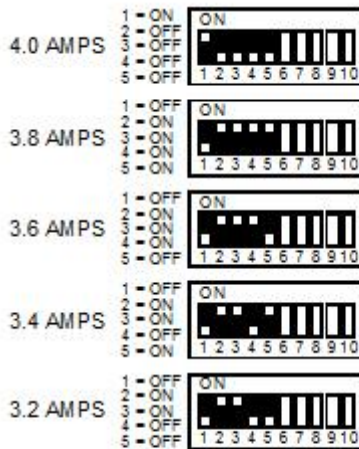
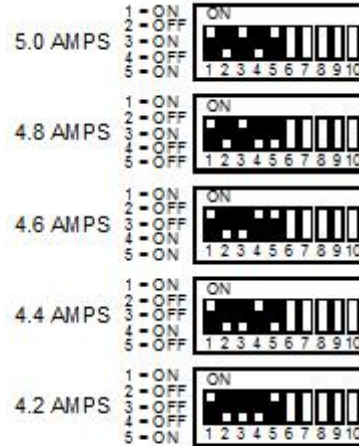
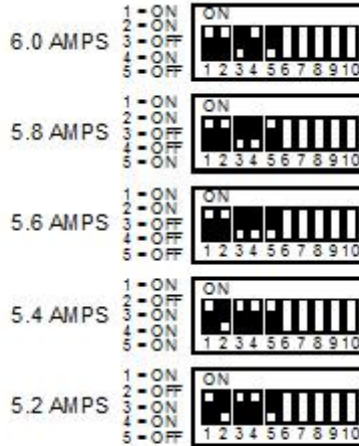
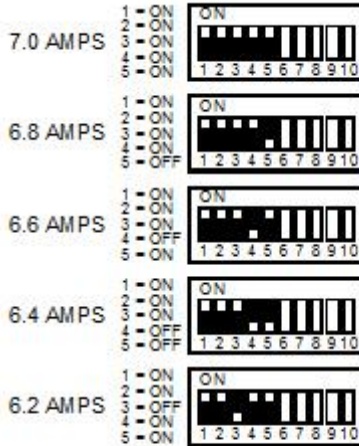


**OPTION SET SWITCHES**

DEFAULT SWITCH SETTINGS



- 1 = CURRENT SET
- 2 = CURRENT SET
- 3 = CURRENT SET
- 4 = CURRENT SET
- 5 = CURRENT SET
- 6 = NOT USED
- 7 = NOT USED
- 8 = NOT USED
- 9 = AUTO STANDBY
- 10 = NEMA 34 & 42 MOTOR





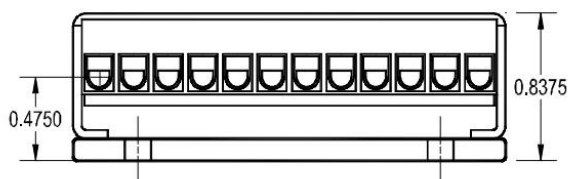
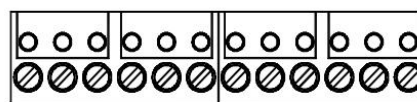
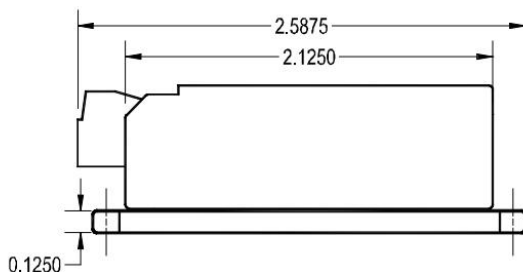
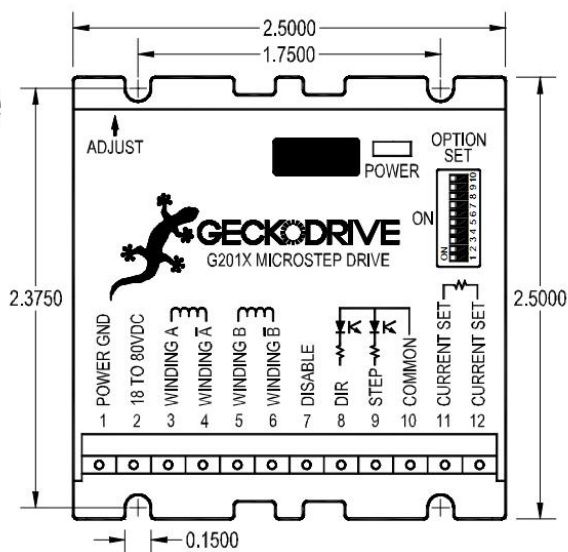
## G201X STEP MOTOR DRIVE

REV 5: SEPTEMBER 13, 2010

GECKODRIVE, INC.  
14662 FRANKLIN AVE  
SUITE E  
TUSTIN, CA 92780  
(714) 832-8874

### G201X Microstep Drive

Cover: Aluminum, Anodised  
Connector: Modular, 5 mm pitch  
Plate: Aluminum, Hard Anodised  
Color: Red, White Font  
Weight: 3.6 oz, (100 gm)  
Size: 2.5" by 2.5" by 0.8375"  
63.5 mm, 63.5 mm, 21.3 mm



#### SPECIFICATIONS

Supply Voltage:	18 to 80 VDC
Phase Current:	0 to 7 Amps
Auto Current Reduction:	50% of set current, 1 second after last step pulse
Quiescent Current:	15 mA or less
Step Frequency:	0 to 300 kHz
Step Pulse "0" Time:	0.5 uS minimum (optoisolator LED on)
Step Pulse "1" Time:	3 uS minimum (optoisolator LED off)
Direction Setup:	0 uS min
Power Dissipation:	1 to 13 W (0 to 7 Amps)
Temp:	0 to 70 C
Humidity:	0 to 95 % (non-condensing)
Size:	2.5"W, 2.5"D, .85"H (63.5mm, 63.5mm, 21.5mm)
Mounting Pattern:	4 6-32 screws, 1.75" by 2.375" (44.5 mm, 60 mm)
Weight:	3.6 oz. (100 gm)