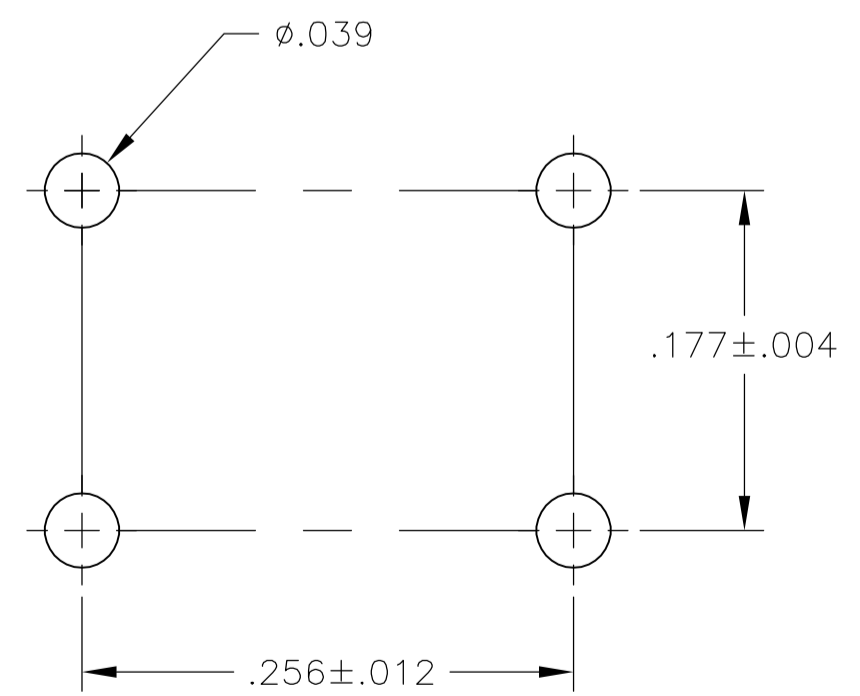
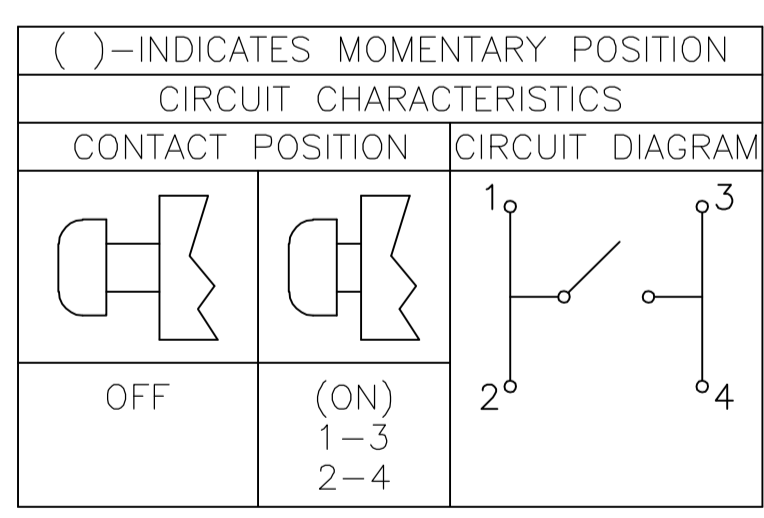


VIEW A-A
FSM6J THRU FSM18J



RECOMMENDED HOLE LAYOUT
TOLERANCE ±.002 UNLESS
OTHERWISE NOTED



SPECIFICATIONS

CASE: POLYAMIDE, BLACK.
COVER: POLYESTER.
ACTUATOR BUTTON. SEE TABLE
MOVING CONTACT: COPPER ALLOY, SILVER CLAD.
FIXED CONTACT/TERMINALS: COPPER ALLOY, SILVER PLATE.

ELECTRICAL:
CONTACT RATING: 50mA @ 12 VDC.
INITIAL CONTACT RESISTANCE: 100 MILLIOHMS MAX
INSULATION RESISTANCE: 100 MEGOHMS @ 100 VDC MIN.
DIELECTRIC STRENGTH: 500 VAC 50/60 HZ FOR 1 MINUTE
LIFE EXPECTANCY:
ON-OFF ELECTRICAL SWITCHING OPERATIONS, 60 CYCLES PER MINUTE, EXCEEDING 100,000 (OPERATIONS) AT THE RATED CURRENT AT A DEPRESSION FORCE NOT EXCEEDING 250 GRAMS. EXCEPT 50,000 CYCLES FOR "AA" OPTION.

MECHANICAL:
ACTUATION FORCE: SEE TABLE
ACTUATION TRAVEL: .010" \pm .010 \pm .004

ENVIRONMENTAL:
OPERATING TEMPERATURE: -31°F TO +185°F (-35°C TO +85°C)
STORAGE TEMPERATURE: -35°F TO +185°F (-35°C TO +85°C)
RESISTANCE TO SOLDER HEAT PER 109-202, CONDITION B
SOLDERABILITY PER EIA-364-52, CLASS 1 CATEGORY 2

1. ALL MATERIALS AND FINISHES SHALL COMPLY WITH EU DIRECTIVE 2002/95/EC OF 27JAN2003 (ROHS).

Actuator Material	Actuator color	Actuation Force	DIM C	DIM B	DIM A	T&B P/N	TYCO P/N
PBT	BLACK	160±50gf	N/A	0.169	0.028	FSM2J	2-1437565-0
PBT	RED	260±50gf	N/A	0.169	0.028	FSM2JA	2-1437565-1
PBT	YELLOW	520±100gf	N/A	0.169	0.028	FSM2JAA	
PBT	BROWN	100±50gf	N/A	0.169	0.028	FSM2JL	2-1437565-4
PBT	BLACK	160±50gf	N/A	0.196	0.055	FSM4J	3-1437565-6
PBT	RED	260±50gf	N/A	0.196	0.055	FSM4JA	3-1437565-7
PBT	YELLOW	520±100gf	N/A	0.196	0.055	FSM4JAA	3-1437565-8
PBT	BROWN	100±50gf	N/A	0.196	0.055	FSM4JL	
ACETAL	BLUE	160±50gf	0.13	0.276	0.134	FSM6J	4-1437565-5
ACETAL	RED	260±50gf	0.13	0.276	0.134	FSM6JA	4-1437565-6
ACETAL	YELLOW	520±100gf	0.13	0.276	0.134	FSM6JAA	
ACETAL	BROWN	100±50gf	0.13	0.276	0.134	FSM6JL	
PBT	BLACK	160±50gf	0.122	0.374	0.232	FSM8J	5-1437565-2
PBT	RED	260±50gf	0.122	0.374	0.232	FSM8JA	5-1437565-3
PBT	YELLOW	520±100gf	0.122	0.374	0.232	FSM8JAA	5-1437565-4
PBT	BROWN	100±50gf	0.122	0.374	0.232	FSM8JL	1571376-1
ACETAL	IVORY	160±50gf	0.128	0.287	0.146	FSM10J	1437565-7
ACETAL	RED	260±50gf	0.128	0.287	0.146	FSM10JA	
ACETAL	YELLOW	520±100gf	0.128	0.287	0.146	FSM10JAA	
ACETAL	BROWN	100±50gf	0.128	0.287	0.146	FSM10JL	
ACETAL	WHITE	160±50gf	0.126	0.315	0.173	FSM12J	1437565-9
ACETAL	BLACK	260±50gf	0.126	0.315	0.173	FSM12JAB	1571376-4
ACETAL	RED	260±50gf	0.126	0.315	0.173	FSM12JA	
ACETAL	YELLOW	520±100gf	0.126	0.315	0.173	FSM12JAA	
ACETAL	BROWN	100±50gf	0.126	0.315	0.173	FSM12JL	
ACETAL	BLACK	160±50gf	0.118	0.512	0.37	FSM14J	1-1437565-2
ACETAL	RED	260±50gf	0.118	0.512	0.37	FSM14JA	1571376-2
ACETAL	YELLOW	520±100gf	0.118	0.512	0.37	FSM14JAA	1825344-1
ACETAL	BROWN	100±50gf	0.118	0.512	0.37	FSM14JL	
ACETAL	BLACK	160±50gf	0.11	0.669	0.527	FSM16J	1-1437565-3
ACETAL	RED	260±50gf	0.11	0.669	0.527	FSM16JA	1571376-3
ACETAL	YELLOW	520±100gf	0.11	0.669	0.527	FSM16JAA	
ACETAL	BROWN	100±50gf	0.11	0.669	0.527	FSM16JL	
ACETAL	BLACK	160±50gf	0.122	0.335	0.193	FSM18J	1-1437565-4
ACETAL	RED	260±50gf	0.122	0.335	0.193	FSM18JA	
ACETAL	YELLOW	520±100gf	0.122	0.335	0.193	FSM18JAA	
ACETAL	BROWN	100±50gf	0.122	0.335	0.193	FSM18JL	

THIS DRAWING IS A CONTROLLED DOCUMENT.		DWN M. BINNER 24SEP2001	<p>Tyco Electronics Corporation Harrisburg, Pa 17105-3608</p>														
DIMENSIONS: INCHES		CHK H. WYNKOOP 26SEP01															
TOLERANCES UNLESS OTHERWISE SPECIFIED:		APVD H. WYNKOOP 26SEP01	NAME MICRO-MINIATURE PUSHBUTTON SWITCH														
<table border="1"> <tr><td>0 PLC</td><td>± .010</td></tr> <tr><td>1 PLC</td><td>± .005</td></tr> <tr><td>2 PLC</td><td>± .002</td></tr> <tr><td>3 PLC</td><td>± .012</td></tr> <tr><td>4 PLC</td><td>± .010</td></tr> <tr><td>ANGLES</td><td>± .010</td></tr> <tr><td>FINISH</td><td>-</td></tr> </table>		0 PLC	± .010	1 PLC	± .005	2 PLC	± .002	3 PLC	± .012	4 PLC	± .010	ANGLES	± .010	FINISH	-	APPLICATION SPEC	SIZE A1
0 PLC	± .010																
1 PLC	± .005																
2 PLC	± .002																
3 PLC	± .012																
4 PLC	± .010																
ANGLES	± .010																
FINISH	-																
MATERIAL SEE SPECIFICATIONS		WEIGHT	CAGE CODE 00779														
		CUSTOMER DRAWING	DRAWING NO 1437565-7														
		SCALE 1:1	RESTRICTED TO														
		SHEET 1 OF 1	REV D2														