

HONEYWELL

See full Datasheet below...

onlinecomponents.com
THE ONLINE DISTRIBUTOR OF ELECTRONIC COMPONENTS

BUY NOW



BUY NOW

masterelectronics.com & onlinecomponents.com
are **authorized** e-commerce distributors
of electronic components.

HONEYWELL
PART NUMBER
4

REV	DOCUMENT	CHANGED BY	CHECK
B	0062802	VKR 24MAR10	CMH

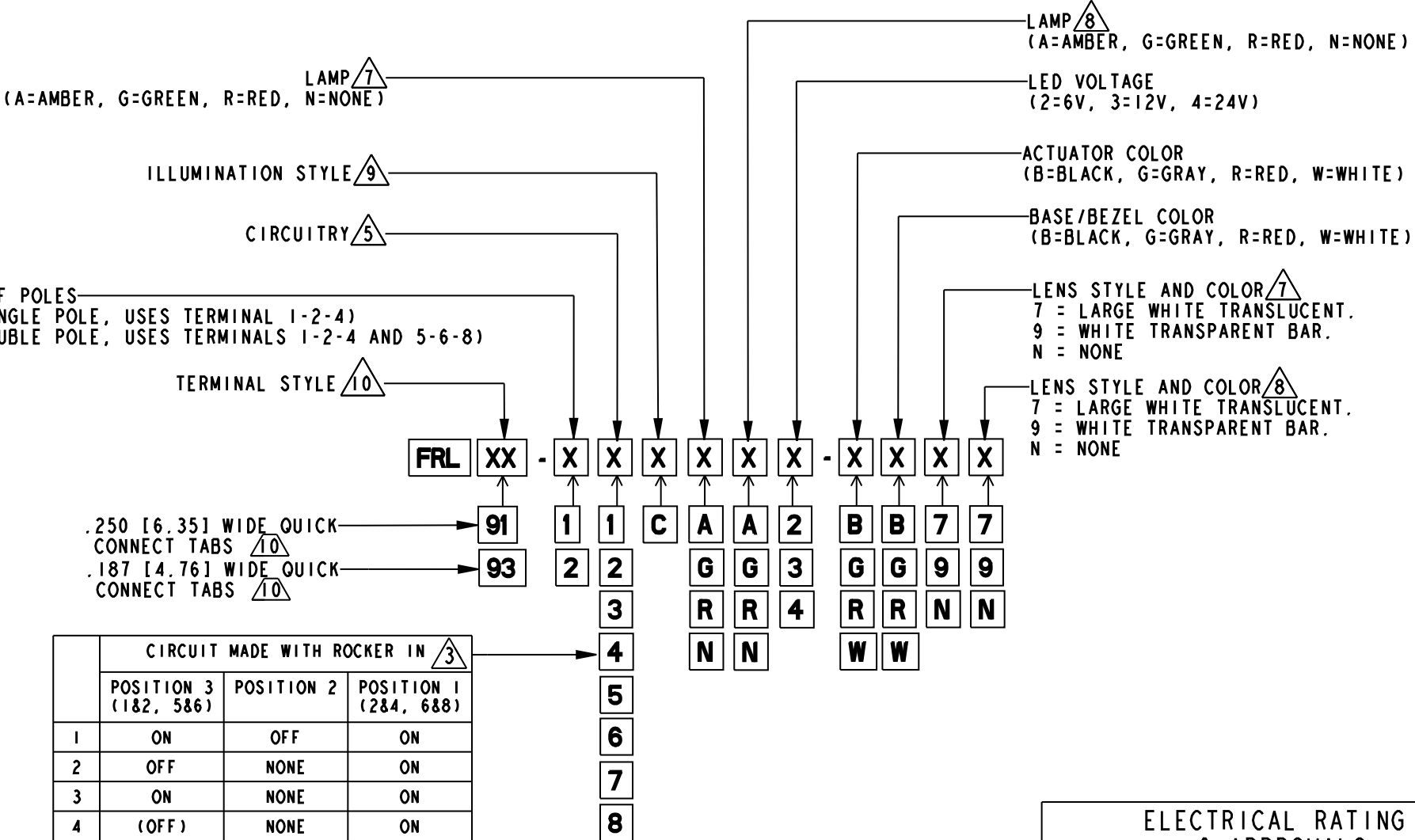
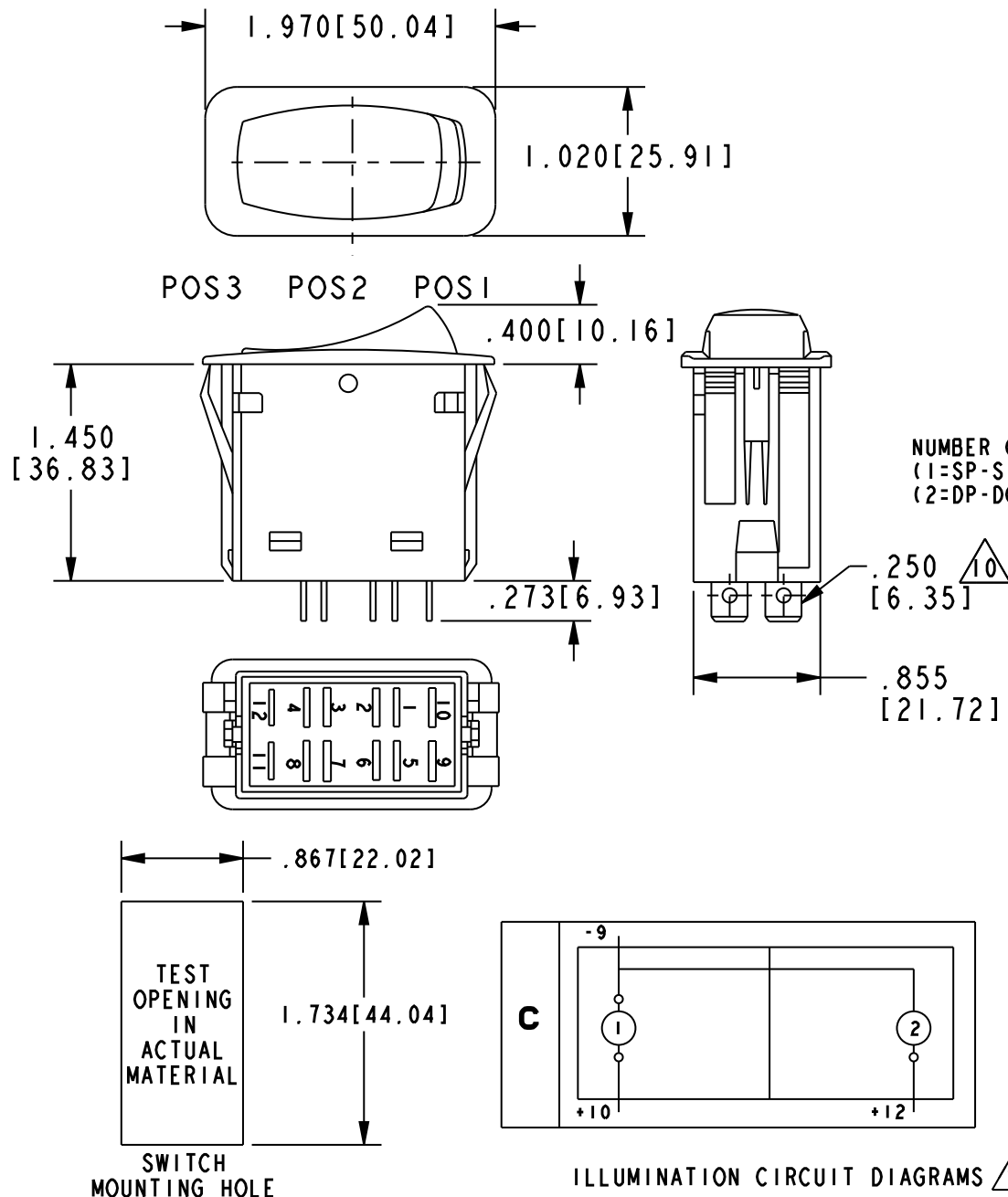
B

A

A

B

A



NOTES
1 - OPERATING TEMPERATURE RANGE: -40°F TO +185°F (-40°C TO +85°C)
2 - ELECTRICAL LIFE: 50,000 CYCLES MOMENTARY, 100,000 CYCLES MAINTAINED.
3 - MECHANICAL LIFE: 250,000 CYCLES MIN
4 - SEE DIAGRAM FOR CATALOGING SCHEME
5 - PARENTHESIS DENOTE MOMENTARY ACTION
6 - SEALED TO IP67
7 - ABOVE TERMINALS 9 AND 10
8 - ABOVE TERMINALS 11 AND 12
9 - REFER TO CIRCUIT DIAGRAMS
10 - TERMINAL WIDTH AND ELECTRICAL RATING DEPENDENT ON STYLE SELECTED

DESIGN UNITS: INCH		
TOLERANCES UNLESS NOTED:		
NO PLACES	X	± .040
ONE PLACE	.X	± .030
TWO PLACE	.XX	± .015
THREE PLACE	.XXX	± .015
FOUR PLACE	.XXXX	± .0005
ANGLES	X	± 2°
THIRD ANGLE PROJECTION		

DRAWN	CR	13 JUN 05
CHECK	RJ	13 JUN 05
THIS DRAWING COVERS A PROPRIETARY ITEM AND IS THE PROPERTY OF HONEYWELL. THIS DRAWING IS NOT TO BE COPIED OR USED WITHOUT THE PERMISSION OF HONEYWELL.		
INTERPRET PER ASME Y14.5M-1994 OTHER HONEYWELL ENGINEERING STANDARDS MAY APPLY		
Pro/ENGINEER 2D		

Honeywell			
TITLE SWITCH, ROCKER			
SIZE B	TYPE I	DRAWING NAME FRL SERIES CHART 1	REV B
SCALE	NTS	SHEET	1 OF 1

ELECTRICAL RATING & APPROVALS
FOR .250 WIDE TABS: 20A, 12V FOR .187 WIDE TABS: 15A, 12V