

# Data Sheet

## FR20CxxVBNN

Page 1/4

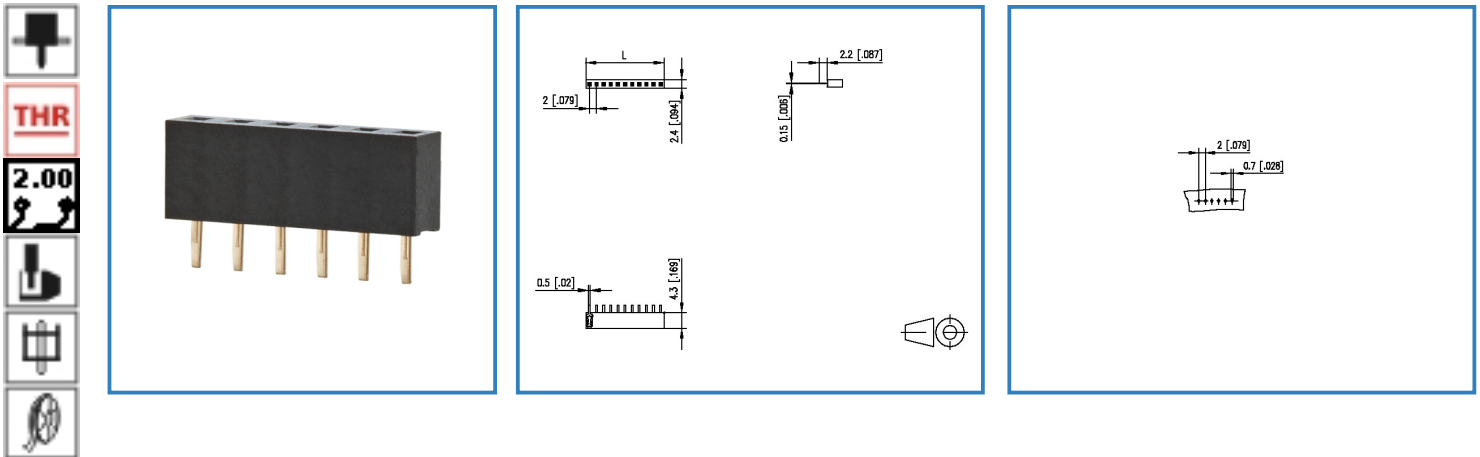
P/N

FR20CxxVBNN

xx=number of poles

2017/01/25

### Illustration



see enlarged drawing at the end of the document

### Product specification

- female connector, THR solderable
- centerline 2.00 mm, direction of connection vertical 0°
- closed ends
- color black
- Tape & Reel packaging
- single row

# Data Sheet

## FR20CxxVBNN

Page 2/4

P/N

FR20CxxVBNN

xx=number of poles

2017/01/25

### Technical Data

#### General Data

Solder pin length	2.20 mm
min. number of poles	2
max. number of poles	40
protection category	IP 00

#### Approvals

Rated current	1 A
---------------	-----

#### Material

insulating material	PE-HT
contact material	CuSn
Glow-Wire Flammability GWFI	-
Glow-Wire Flammability GWIT	-
contact surface	Ni + Au
contact pin material	CuSn
contact pin surface	Ni + Au Flash

#### Climatic properties

upper limit temperature	105 °C
lower limit temperature	-40 °C

#### General

solderability	Acc. to IPC/JEDEC J-STD-020D-MSL 1
Tolerance	ISO 2768 -mH

# Data Sheet

## FR20CxxVBNN

Page 3/4

P/N

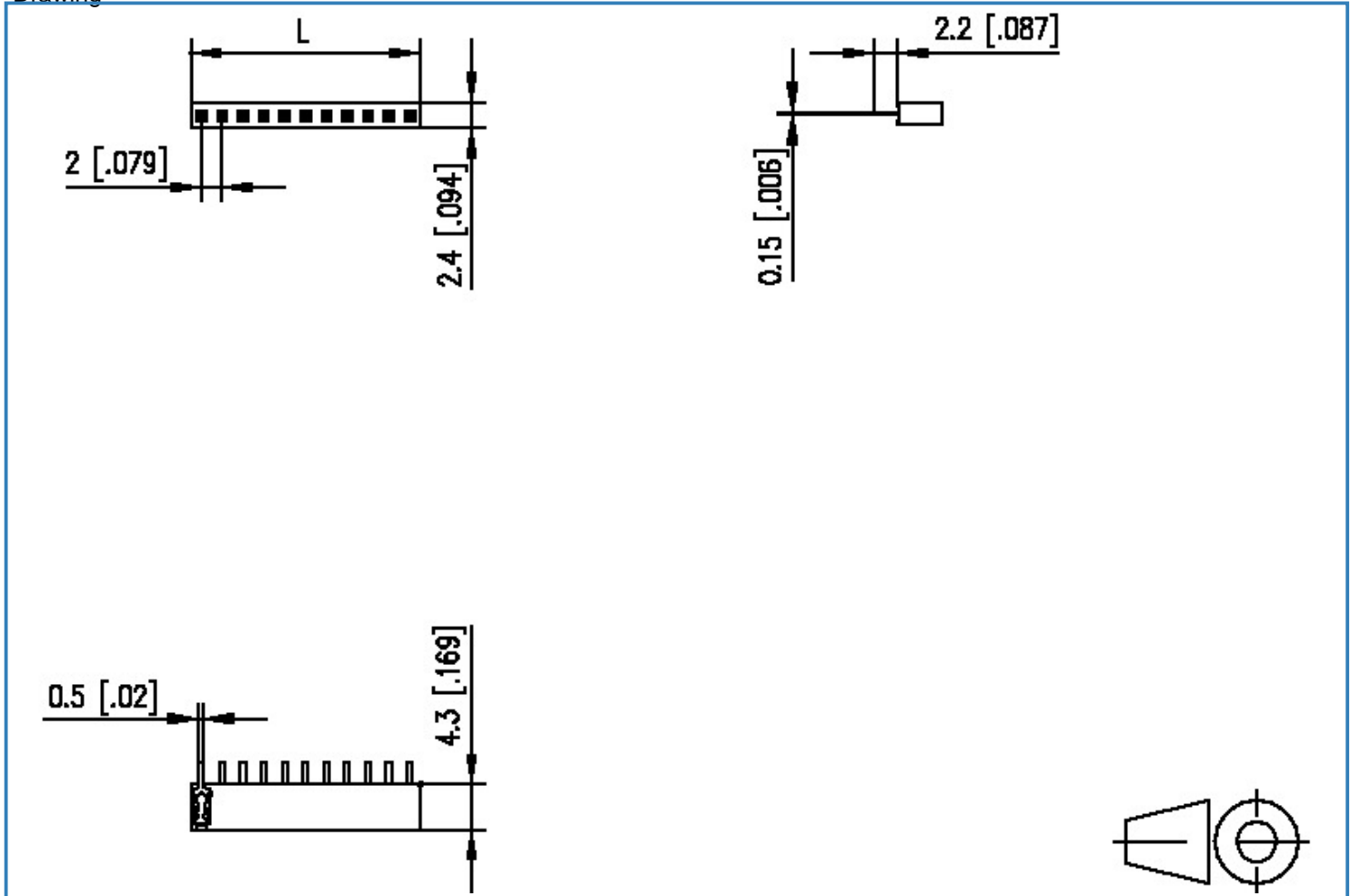
FR20CxxVBNN

xx=number of poles

2017/01/25

### Illustration

Drawing



$L = (\text{pole size} - 1) \times \text{centerline} + 2.0 [0.079]$



# Data Sheet

## FR20CxxVBNN

Page 4/4

P/N

FR20CxxVBNN

xx=number of poles

2017/01/25

PCB Layout

