



# OPEN FRAME FLOOR RACKS

**2-POST**  
ALUMINUM & STEEL

## 2PR 2-Post Open Frame Racks



SECTION

03

### 2-POST ALUMINUM FRAME

	3FT.	4FT.	7FT.
Item No.	FR1903-20-02	FR1904-28-02 (Black) FR1904-28-03 (Silver)	FR1907-45-02 (Black) FR1907-45-03 (Silver)
Rack Size Height (Rack Units)	40" (20U)	54" (28U)	84" (45U)
Rack Size Width	21"	21"	21"
Rack Size Depth	14"	14"	14"
Mounting Format	19"	19"	19"
Load Capacity	400lbs	500lbs	1000lbs
Dual Mounting Rails	Tapped (#12-24)	Tapped (#12-24)	Tapped (#12-24)
Numbered RU positions	Yes	Yes	Yes
Electrostatic Powdercoat MicroFinish	Black	Black (-02 Only)	Black (-02 Only)
Screws & Washers	12 each	20 each	40 each
Base Design	Floor Mount	Floor Mount	Floor Mount
Compliance	EIA-310D	EIA-310D	EIA-310D
Delivery Style	Knockdown	Knockdown	Knockdown

### 2-POST STEEL FRAME

	7FT.	7FT.
Item No.	FR1907-45-02SC	FR1907-45-02S
Rack Size Height (Rack Units)	88" (45U)	84" (45U)
Rack Size Width	24"	21"
Rack Size Depth	24"	22.5"
Mounting Format	19"	19"
Load Capacity	1000lbs	1000lbs
Dual Mounting Rails	Cage Nut (#12-24)	Cage Nut (#12-24)
Numbered RU positions	Yes	Yes
Electrostatic Powdercoat MicroFinish	Black	Black
Cage Nuts, Screws & Washers	28 each	28 each
Base Design	Casters	Floor Mount
Compliance	EIA-310D	EIA-310D
Delivery Style	Knockdown	Knockdown

## 2PR Structure and Fabrication

Item No.	Color	Rack Units (U)	Material	Posts	Side Rails (AWG)	Top Brackets (AWG)	Base (AWG)
<b>2-POST ALUMINUM FRAME</b>							
FR1903-20-02	Black	20U	6063 T6 Aluminum	2	5	5	2
FR1904-28-02	Black	28U	6063 T6 Aluminum	2	5	5	2
FR1904-28-03	Silver	28U	6063 T6 Aluminum	2	5	5	2
FR1907-45-02	Black	45U	6063 T6 Aluminum	2	5	5	2
FR1907-45-03	Silver	45U	6063 T6 Aluminum	2	5	5	2
<b>2-POST STEEL FRAME</b>							
FR1907-45-02S	Black	45U	Cold Rolled Steel	2	13	13	9
FR1907-45-02SC	Black	45U	Cold Rolled Steel	2	13	13	13

# OPEN FRAME FLOOR RACKS

2-POST

ALUMINUM & STEEL

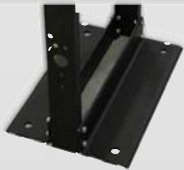


## 2PR 2-Post Open Frame Racks

Item No.	Rack Units (1U=1.75") 19" Format	External Dimensions (inch)			Internal Dimensions (inch)			Load Capacity (lbs.)	Shipping Weight (Assembled)	Shipping Weight (Knockdown)
		H	W	D	H	W	D			
FR1903-20-02	20U	40"	21"	14"	35"	19"	3"	400	N/A	18
FR1904-28-02	28U	54"	21"	14"	49"	19"	3"	500	N/A	21
FR1904-28-03	28U	54"	21"	14"	49"	19"	3"	500	N/A	21
FR1907-45-02	45U	84"	21"	14"	79"	19"	3"	800	N/A	27
FR1907-45-03	45U	84"	21"	14"	79"	19"	3"	800	N/A	27
FR1907-45-02S	45U	84"	21"	14"	79"	19"	3"	800	N/A	37
FR1907-45-02SC	45U	88"	24"	24"	79"	19"	3"	800	N/A	64

SECTION  
**03**

### 2PR Floor Mount Holes



Standard racks are available with floor mount holes for mounting securely to floor.

### 2PR Locking Casters



Available in a caster version with locking casters for flexibility in relocation of the rack.

### 2PR Dual-Sided Rails



"U" shaped cage nut rail design to allow front and rear mounting of equipment.

### 2PR Reinforced Angled Top Braces



Reinforced angled top brace supports provide added load strength.

### 2PR Rack Unit Numbered Rails



Numbered rack units makes it easier to configure.

**NEW**

