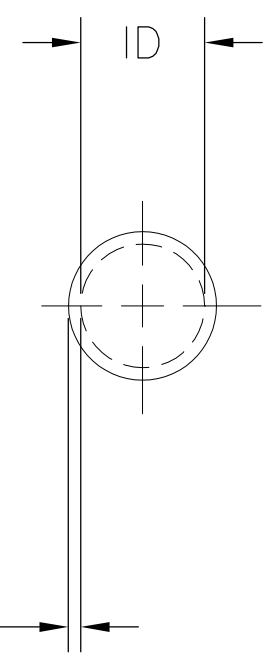
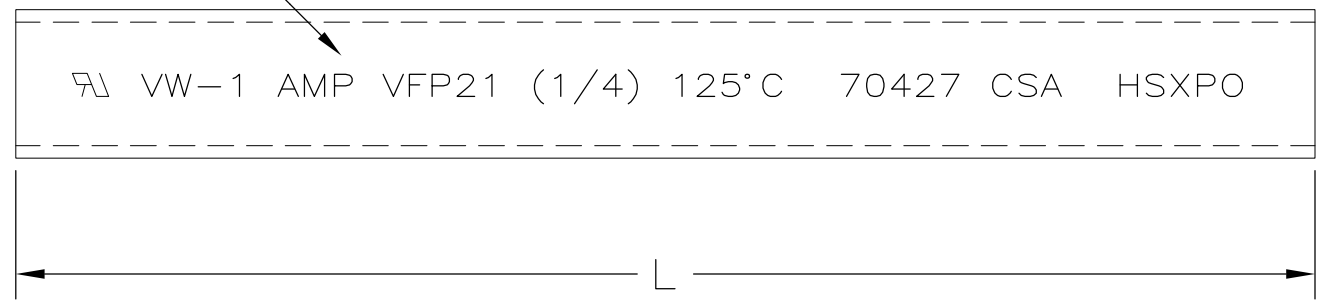


6.35 [.250] MINIMUM EXPANDED  
 3.18 [.125] MAXIMUM RECOVERED



REVISIONS		
LTR	DESCRIPTION	DATE
Y	REVISED PER DCR NO R060226	10/13/2006
Y1	REVISED PER ECO-09-021510	12SEP09

0.64 [.025] NOMINAL WALL THICKNESS FULLY RECOVERED

- 1. TUBING VFP21 MARKED AS SHOWN IN WHITE CHARACTERS ON SURFACE INDICATED
- 2. TUBING VFP21 IS UL RECOGNIZED, IS RATED 125°C [257°F] AND MEETS VW-1 FLAME TEST.
- 3. TUBING VFP21 IS CSA CERTIFIED AND MEETS VW-1 FLAME TEST.
- 4. TUBING FP21 IS UNMARKED AND MEETS REQUIREMENTS OF AMS-DTL-23053/5-106-0

MARKING	NOTES	LENGTH L	PART NUMBER
4	4	60.96 m [200 ft] MINIMUM	2-603326-7
1	2 3	60.96 m [200 ft] MINIMUM	2-603326-6
4	4	31.75 ± 1.52 [1.25 ± .06]	2-603326-4
1	2 3	30.48 m [100 ft] MINIMUM	2-603326-2
4	4	30.48 m [100 ft] MINIMUM	2-603326-1
4	4	1.22 m [4 ft] MINIMUM	1-603326-1
1	2 3	25.4 ± 1.52 [1.00 ± .06]	603326-7
1	2 3	304.8 ± 3.05 [12.00 ± .12]	603326-4
1	2 3	1.22 m [4 ft] MINIMUM	603326-1

- 5. WEIGHT PER LINEAR FOOT/304.8 mm:  
2.54 g/.006 lbs.
- 6. MATERIAL: BLACK POLYOLEFIN
- 7. OBSOLETE PARTS: OBSOLETE CIS STREAMLINING PER D.RENAUD/D.SINISI

**SPECIFICATION CONTROL DRAWING**

UNLESS OTHERWISE SPECIFIED DIMENSIONS ARE IN mm. INCH DIMENSIONS ARE IN BRACKETS.	DRAWN UNGUYEN	DATE 10/13/2006	Tyco Electronics Corporation 300 Constitution Drive Menlo Park, CA, USA 94025 
	RPN	CAD NAME R060226	
DECIMALS .XX ± .01 [0004 in] .X ± .1 [004 in] ANGLES .X ± 0.5 DEG	THIRD ANGLE PROJECTION	SIZE B	CODE IDENT. NO. 06090
		DWG. NO. C-603326	DO NOT SCALE THIS DRAWING
		SHEET 1 OF 1	