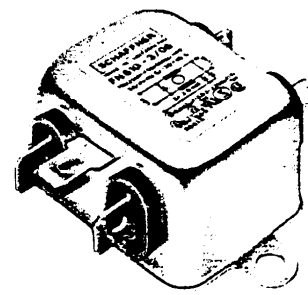


230-546



# FN 610



General purpose chassis-mounting filter  
A/B versions: for medical equipment

Applications: General electronic devices

FN 610	Rated current A		Leakage current 220V/50Hz	Inductance mH	Connections	Housing	Weight g	Compliance					
	40°C	25°C						④	⚡	VA	Ⓢ	Ⓢ	
♥ FN 610-1/06	1	1.15	2 x 0.21 mA	3	soldering lugs/fast-on 6.3x0.8	F1	55	X	X	X	X	X	X
FN 610-1/07	1	1.15	2 x 0.21 mA	3	flexible wires AWG 20	F1	65	X	X	X	X	X	X
♥ FN 610-3/06	3	3.4	2 x 0.21 mA	2	soldering lugs/fast-on 6.3x0.8	F1	60	X	X	X	X	X	X
♥ FN 610-3/07	3	3.4	2 x 0.21 mA	2	flexible wires AWG 18	F1	70	X	X	X	X	X	X
♥ FN 610-6/06	6	6.9	2 x 0.21 mA	0.75	soldering lugs/fast-on 6.3x0.8	F1	60	X	X	X	X	X	X
FN 610-6/07	6	6.9	2 x 0.21 mA	0.75	flexible wires AWG 16	F1	70	X	X	X	X	X	X
♥ FN 610-10/06	10	11.5	2 x 0.21 mA	0.45	soldering lugs/fast-on 6.3x0.8	F2	85	X	X	X	X	X	X
FN 610-10/07	10	11.5	2 x 0.21 mA	0.45	flexible wires AWG 14	F2	95	X	X	X	X	X	X
♥ FN 610-20/06	20	23	2 x 0.21 mA	0.48	soldering lugs/fast-on 6.3x0.8	J1	220	X	X	X	X	O	O
FN 610-30/03	30	34	2 x 0.21 mA	0.61	clamp terminal	L1	630	X	X	X	X	O	O
♥ FN 610-30/10	30	34	2 x 0.21 mA	0.61	screw UNC 8-32	L1	630	X	X	X	X	O	O

\* on 16 A approved

### FN 610A

FN 610A-1/06	1	1.15	2 x 40 µA	3	soldering lugs/fast-on 6.3x0.8	F1	55	X	O	X	X	O	O
FN 610A-3/06	3	3.4	2 x 40 µA	2	soldering lugs/fast-on 6.3x0.8	F1	60	X	O	X	X	O	O
FN 610A-6/06	6	6.9	2 x 40 µA	0.75	soldering lugs/fast-on 6.3x0.8	F1	60	X	O	X	X	O	O
FN 610A-10/06	10	11.5	2 x 40 µA	0.45	soldering lugs/fast-on 6.3x0.8	F2	85	X	O	X	X	O	O

### FN 610B

FN 610B-1/06	1	1.15	2 x 2 µA	3	soldering lugs/fast-on 6.3x0.8	F1	55	X	X	X	X	X	X
♥ FN 610B-3/06	3	3.4	2 x 2 µA	2	soldering lugs/fast-on 6.3x0.8	F1	60	X	X	X	X	X	X
FN 610B-6/06	6	6.9	2 x 2 µA	0.75	soldering lugs/fast-on 6.3x0.8	F1	60	X	X	X	X	X	X
FN 610B-10/06	10	11.5	2 x 2 µA	0.45	soldering lugs/fast-on 6.3x0.8	F2	85	X	X	X	X	X	X

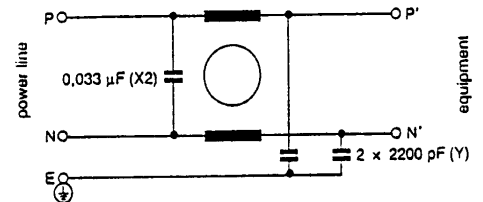
♥ stock types

○ = not approved X = approved

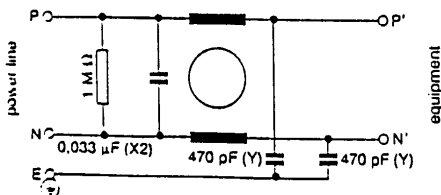
Operating voltage 250 V max.  
 Operating frequency DC to 400 Hz max.  
 Temperature range -25°C to +85°C  
 Test voltage  
 FN 610 P/N → E 2 kV/50 Hz  
 FN 610A, FN 610B P/N → E 2.5 kV/50 Hz

For further information, see general part.

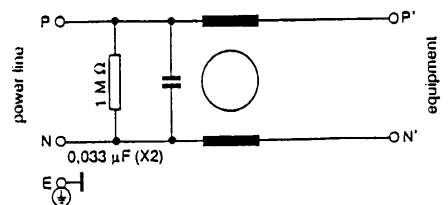
FN 610



FN 610A



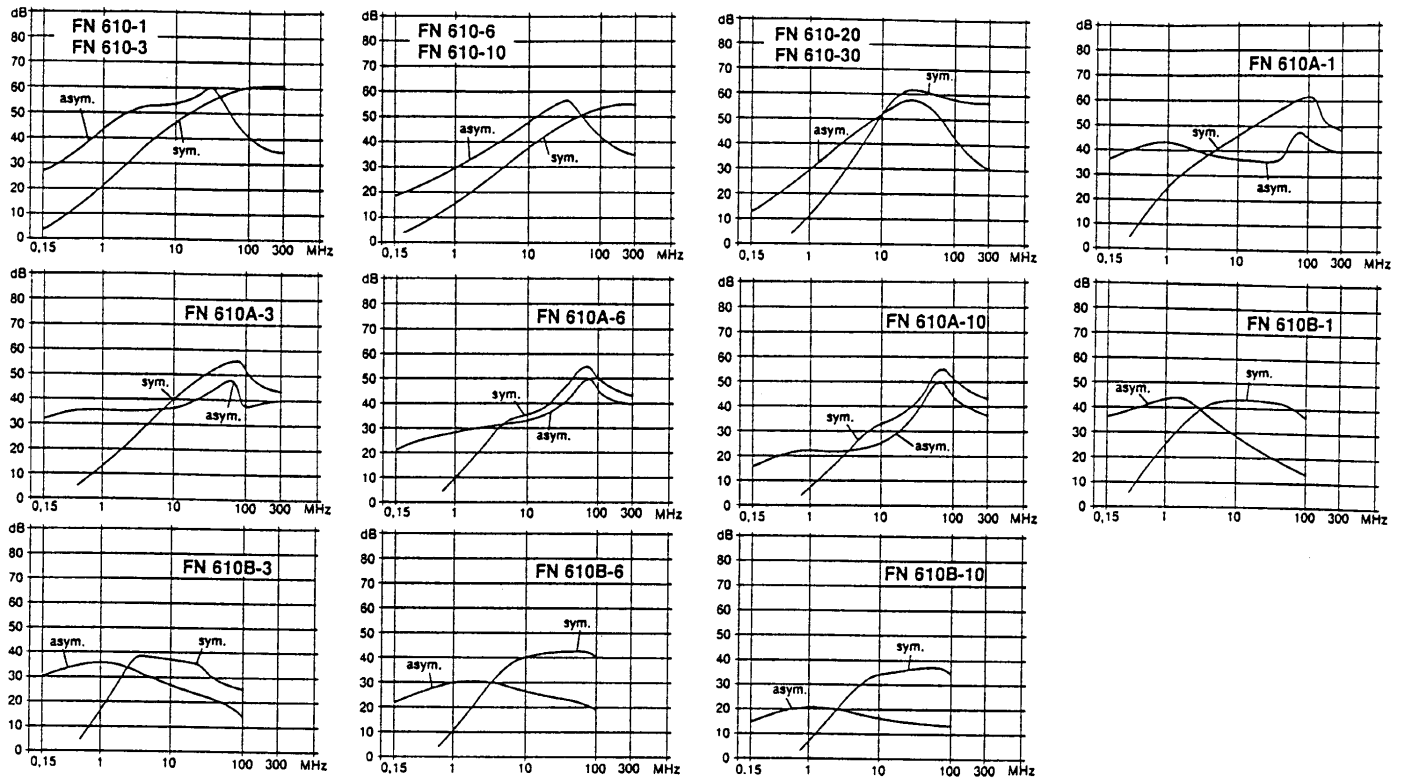
FN 610B



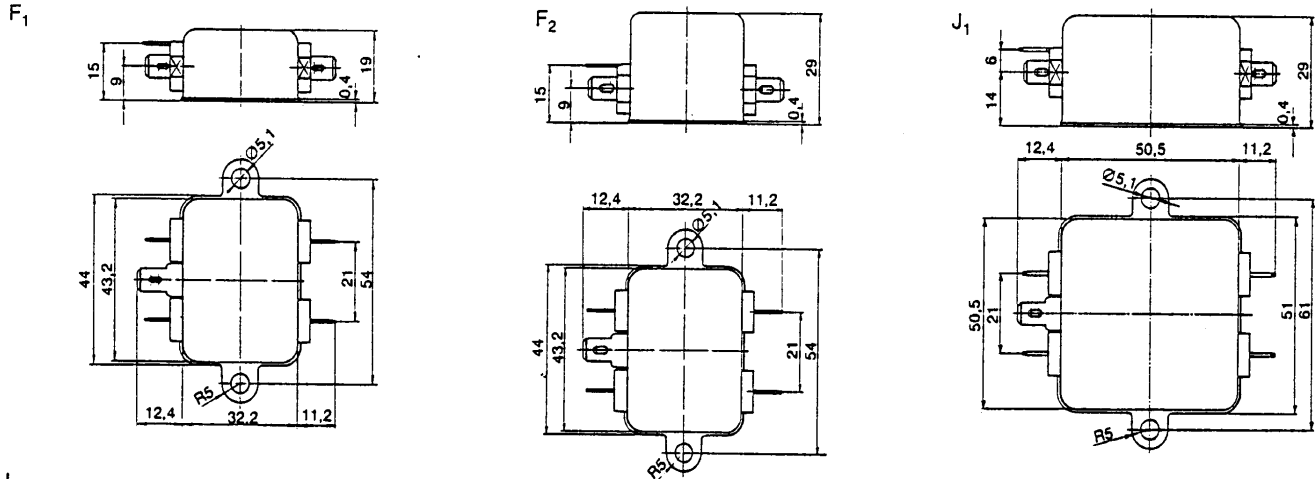
# FN 610

SCHAFFNER

## Insertion loss



## Dimensions (Housings F<sub>1</sub>, F<sub>2</sub>, J<sub>1</sub>: FN 610 .../06, L<sub>1</sub>: FN 610 .../03)



## Alternative connections

.../03  
Clamp terminal with M4 screw

.../07  
flexible wires

.../10  
Screw feed-through UNC 8-32

