

Compact three-phase EMC/RFI-filter for industrial motor drive applications

FN 3270

- Very compact and light weight design requiring minimum space
- Easy, time-saving installation and contacting
- NEW: protective covers as optional accessory available
- Attenuation performance according to EN61800-3/A11
- Sehr kompakte und leichte Bauform mit minimaler Standfläche
- Einfache, zeitsparende Montage und Kontaktierung
- NEU: optional Abdeckhauben als Berührungsschutz erhältlich
- Erfüllt die Anforderungen der PDS Norm EN61800-3/A11
- Très compact et d'une design léger
- Facile à implanter et apporte un gain de temps au montage
- NOUVEAU: couvercle de protection disponible en option
- Atténuation en conformité avec la EN61800-3/A11



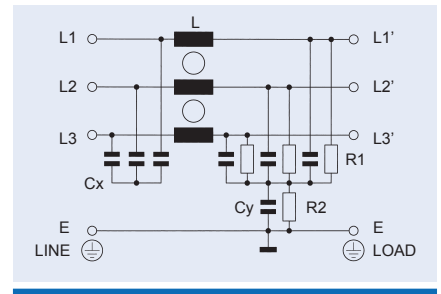
Technical specifications

Maximum operating voltage:	3 x 520VAC (480VAC +10% possible)
Operating frequency:	dc to 60Hz
Current ratings:	10 to 1000A @ 50°C
High potential test voltage:	P --> E 2750VDC for 2 sec P --> P 2250VDC for 2 sec
Overload:	4 times rated current at switch on, 1.5 times rated current for 1 minute, once per hour
Temperature range:	-25°C to +100°C (25/100/21)
Flammability corresponding to:	UL94V2
Design corresponding to:	UL 1283, CSA 22.2 No. 8 1986, EN 133'200

Approvals



Typical electrical schematic



Filter	Current rating @ 50°C (40°C) [A]	Typical drive power rating* [kVA]	Leakage current** 480VAC/50Hz [mA]	Power Loss [W]	I/O connections	Weight [kg]	Protective covers*** Order code
FN 3270H-10-29	10 (11)	5.5	26.4	2.1	29	0.4	-
FN 3270H-20-29	20 (22)	11	26.4	3.6	29	0.5	-
FN 3270H-35-33	35 (38)	22	29.4	5.9	33	0.7	-
FN 3270H-50-34	50 (55)	30	29.4	11.2	34	1.2	-
FN 3270H-65-34	65 (71)	37	29.4	11.8	34	1.3	-
FN 3270H-80-35	80 (88)	45	29.4	11.8	35	2.2	-
FN 3270H-100-35	100 (110)	55	29.4	15.0	35	2.6	-
FN 3270H-150-99	150 (164)	75	59.5	8.1	99	6.4	1151-047
FN 3270H-200-99	200 (219)	110	59.5	14.4	99	6.4	1151-047
FN 3270H-250-99	250 (274)	132	59.5	22.5	99	6.4	1151-047
FN 3270H-320-99	320 (350)	160	59.5	12.2	99	7.2	1151-047
FN 3270H-400-99	400 (438)	220	59.5	19.2	99	7.2	1151-047
FN 3270H-600-99	600 (657)	315	59.5	35.6	99	7.2	1151-047
FN 3270H-1000-99	in preparation	in preparation	in preparation	in prep.	in preparation	in prep.	in prep.

* Calculated at rated current, 480VAC and cos phi = 0.8. The exact value depends upon the efficiency of the drive, the motor and the entire application.

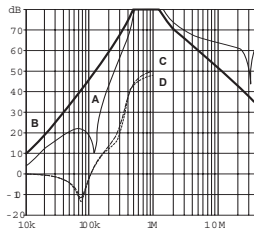
** Maximum Leakage under normal operating conditions. Note: if two phases are interrupted, worst case leakage could reach 5.2 times higher levels.

*** Please contact your local Schaffner partner to order the optional protective covers with the order code in the table above.

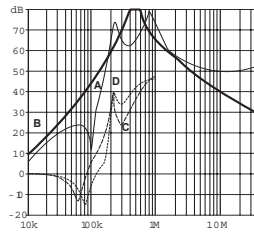
FN 3270 insertion loss

Per CISPR 17; A=50Ω/50Ω sym; B = 50Ω/50Ω asym; C = 0.1Ω/100Ω sym; D = 100Ω/0.1Ω sym.

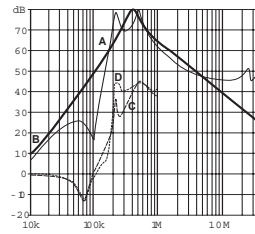
10 and 20A types



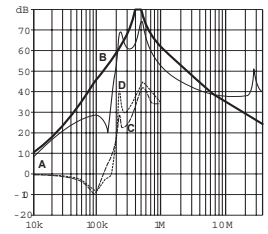
35A types



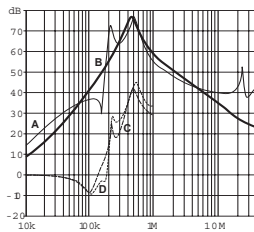
50 and 65A types



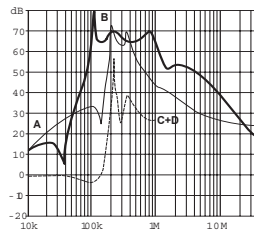
80A types



100A types



150 to 1000A types



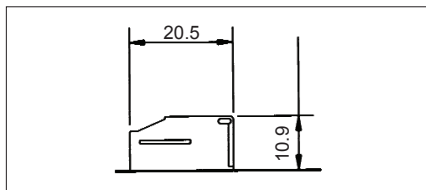
Features and advantages

- An extremely compact and light-weight filter design requiring minimum mounting space in installations and cabinets.
- Simple and time saving installation with good accessibility for automatic- and hand-tools.
- Solid, touch-safe terminal blocks, for all filters from 10 to 100A, offering sufficient contacting cross section according to the EN60204-1 installation standard.
- Optionally available transparent protective covers for all filters with busbars from 150 to 1000A, to protect the installer, operator or inspector from undeliberate touching of live conductors. They can easily be retrofitted even if the filter is already installed and connected.
- These EMC-filters provide the attenuation performance needed to fulfil EN61800-3/A11.
- Guaranteed filter performance under full-load operating conditions.
- 14 different filter models allow the specific choice and deployment for most industrial applications.

Typical applications

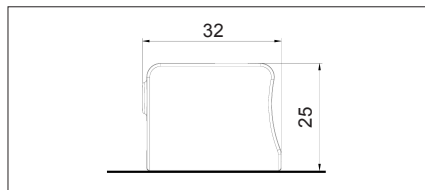
- Variable speed electrical power drive systems / motor drives for mainly industrial purpose.
- Various industrial applications comprising frequency inverters / motor drives / servo drives.

Filter input/output connections



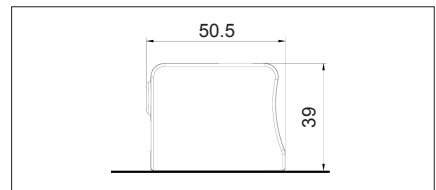
Type /29

Safety terminal block for solid wire 6mm², flex wire 4mm² or AWG 10.
Max. torque: 0.8Nm



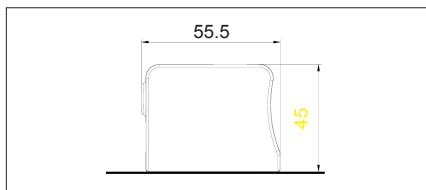
Type /33

Safety terminal block for solid wire 16mm², flex wire 10mm² or AWG 6.
Max. torque: 1.8Nm



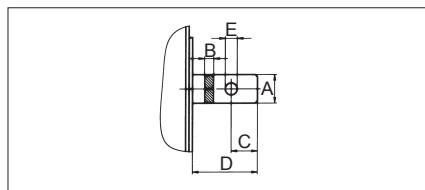
Type /34

Safety terminal block for solid wire 35mm², flex wire 25mm² or AWG 2.
Max. torque: 4.5Nm



Type /35

Safety terminal block for solid and flex wire 50mm² or AWG 1/0.
Max. torque: 8Nm



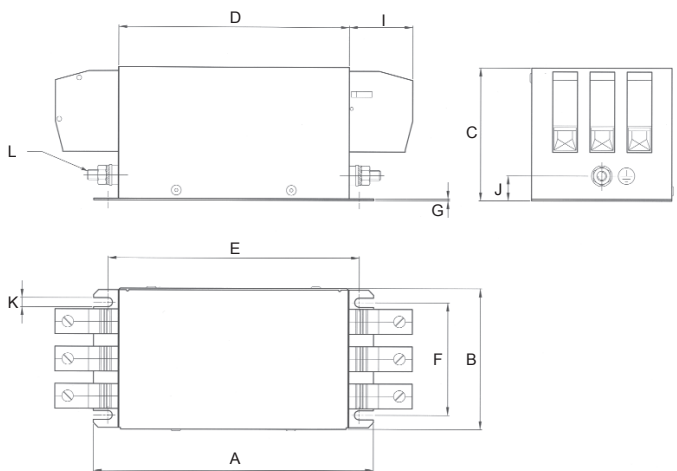
Type /99

Dimensions of busbar connections can be found in the table beside.

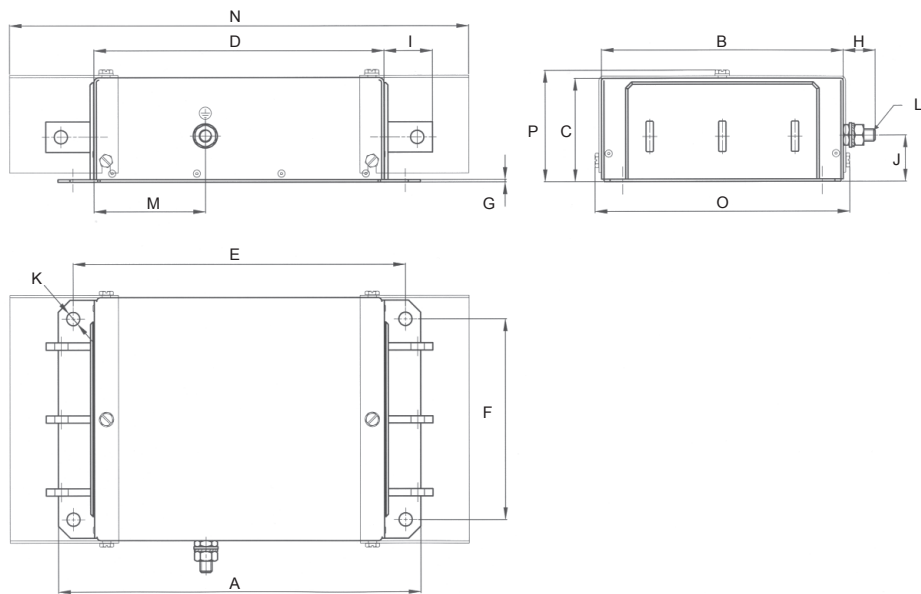
	150A	200A	250A	320A	400A	600A	1000A
A	20	25	...				
B	3	6	8				
C	10	12.5	...				
D	37						
E	9	11	...				

FN 3270 mechanical data

10A to 100A types



150A to 1000A types



Dimensions

	10A	20A	35A	50A	65A	80A	100A	150A	200A	250A	320A	400A	600A	1000A
A	150	160	170	200	230				300			...		
B	58	70	85	95					200			...		
C	58	68	80	90					86			...		
D	120	130	140	170	200				240			...		
E	132.5	142.5	152.5	182.5	212.5				275			...		
F	28	50	65	75					165			...		
G	1			1.5					2			...		
H										26.5			...	
I	11.5	25	39	45					40			...		
J	20.5	20	15	16					37			...		
K	4.5	5.5						11			...			
L	M4	M5	M6	M8					M10			...		
M										92			...	
N										380			...	
O										211			...	
P										93			...	

All dimensions in mm; 1 inch = 25.4 mm

Tolerances according: ISO2768-m / EN22768-m

Schaffner's worldwide sales and distribution network

HEADQUARTERS

Schaffner EMV AG
Nordstrasse 11
CH-4542 Luterbach
Switzerland
Tel: (032) 6816 626
Fax: (032) 6816 641
Sales
Tel: (032) 6816 802

SALES SUBSIDIARIES

Schaffner Beijing Liaison Office
Room 507, Bright China Chang An Building
No. 7 Jianguomennei Dajie
Beijing 100005

China
Tel: (10) 6510 1761
Fax: (10) 6510 1763

Schaffner Oy
Tynninkuja 7
08700 Virkkala

Finland
Tel: (019) 326 616
Fax: (019) 326 610

Schaffner EMC S. A. S.
43 rue Michel Carré
F-95103 Argenteuil

France
Tel: (01) 34 34 30 60
Fax: (01) 39 47 02 28

Schaffner EMC S. A. S.
F-38560 Champ sur Drac
Tel: (04) 76 68 64 00
Fax: (04) 76 68 63 70

Schaffner EMC S. A. S.
F-35510 Cesson-Sévigné
Tel: (02) 99 22 70 00
Fax: (02) 99 22 70 07

Schaffner EMV GmbH
Schoemperlenstrasse 12B
D-76185 Karlsruhe

Germany
Tel: (0721) 56 910
Fax: (0721) 56 9110

Northern Germany
D-59581 Warstein
Tel: (02902) 97 56 10
Fax: (02902) 97 56 80

Schaffner EMC Srl
Via Galileo Galilei, 47
I-20092 Cinisello Balsamo (MI)

Italy
Tel: (02) 66 04 30 45
Fax: (02) 61 23 943

Schaffner EMC KK
2-31-6 Kamiyama
Setagaya-Ku
Tokyo 154-0011

Japan
Tel: (03) 3418 5822
Fax: (03) 3418 3013

Schaffner EMC Pte Ltd
Blk 3015A Ubi Road 1
05-09 Kampong Ubi Industrial Estate
Singapore 408705

Singapore
Tel: 6377 3283
Fax: 6377 3281

Schaffner EMC AB
Turebergstorg 1,6
S-19147 Sollentuna
Sweden
Tel: (08) 57921121
Fax: (08) 929690

Schaffner EMC Ltd
Ashville Way
Molly Millar's Lane
Wokingham
Berks RG41 2PL
UK
Tel: (0118) 9770070
Fax: (0118) 9792969

Schaffner EMC Inc
52 Mayfield Avenue
Edison, NJ 08837
USA
Toll free: 800 367 5566
Tel: (732) 225 9533
Fax: (732) 225 4789

GROUP DISTRIBUTORS

Arrow (Spoerle Electronic)
Austria Tel: 01 360 460
Belgium Tel: 02 725 4660
Czech Republic Tel: 02 7174 2000
Germany Tel: 6103 3048
Netherlands Tel: 030 6391 234
Poland Tel: 022 856 9090
South Africa Tel: 11 923 9600
Switzerland Tel: 01 874 6262
UK Tel: 01234 360777
USA Tel: 800-558-1903

Avnet
Belgium Tel: 2 709 9000
Denmark Tel: 43 22 80 40
Finland Tel: 9 6131 8500
Israel Tel: 9 796 6999
Netherlands Tel: 76 57 22 500
Norway Tel: 66 77 36 00
Spain Tel: 91 372 7200
Sweden Tel: 8 587 460 00
Switzerland Tel: 056 437 5111
UK Tel: 1438 788 500

Eurodis (Microdis Electronics)
Austria Tel: 1 610 620
Czech Republic Tel: 506 411494
France Tel: 1 4180 3580
Hungary Tel: 1 349 0406
Italy Tel: 2 489 4731
Lithuania and Baltic countries Tel: 2 652 683
Poland Tel: 71 301 0400
Romania Tel: 56 292 774
Russia Tel: 095 535 6398
Slovak Republic Tel: 88 412 3573
UK Tel: 1737 242 464
Ukraine Tel: 322 593 014
Yugoslavia Tel: 11 329 1063

Farnell
Worldwide <http://www.farnell.com>

RS Components
Worldwide <http://rswww.com>

LOCAL DISTRIBUTORS

Australia
Westek Electronics Pty Ltd Tel: 3 9369 8802

Brasil
Spectrum Comercio Imp. e Exp. Ltda. Tel: 11 3889 0052

Canada
Sandbeck Electronics Tel: 519-746-5801

Croatia
Tetra d. o. o. Tel: 21 87 45 93

Czech Republic
PAR Ltd. Tel: 2 6775 0625

Denmark
Team Tech Tel: 45 66 25 00

Greece
Micarelec S.A. Tel: 10 569 5042

Hong Kong
Denetron International Ltd. Tel: 2 707 9132

India
Vishal Agencies Tel: 40 711 2079

Japan
Densei-Lambda K.K. Tel: 3 3447 4411
SSR Engineering Co. Ltd. Tel: 45 730 5580
Unidux Inc Tel: 422 32 4500

Korea
Power EMC TEK Tel: 2 501 5852

New Zealand
Inline Components Ltd. Tel: 6 308 6411

Norway
Metric Industrial Electronics Tel: 22 76 40 00

Poland
Astat Sp. Tel: 61 8488 871

Switzerland
Distrelec AG Tel: 01 944 99 11

Taiwan
Bandtek International Co. Ltd. Tel: 2 2657 2615
Richtec Instruments Co. Ltd. Tel: 2 2675 0482

Turkey
Artest Elektronik Tel: 216 478 1757

USA
National
Arrow Electronics Tel: 800-558-1903
Newark Electronics Tel: 800-463-9275
Sager Electronics Tel: 800-724-3780

North East
CAM RPC Electronics Tel: 412-963-6202
Coughlin Electronics Tel: 800-643-1499
Glynn Electronics Tel: 800-225-8684
Hughes Peters Tel: 800-899-8228
Marlac Electronics Tel: 856-234-4200

South East
Hammond Electronics Tel: 800-929-3672

West Coast
Prime Electronics Tel: 800-347-1001

West and Mid West
Walker IEC Tel: 877-274-3442

South West
Wofford Electronics Tel: 800-275-1666

North West
Halco Tel: 206-382-1300
Walker IEC Tel: 877-274-3442

690-768A Urs Uebelhart/May 2003

© 2003 Schaffner EMV. Specifications subject to change without notice. All trademarks recognised.

 Schaffner is an ISO-registered company. Its products are designed and manufactured under the strict quality requirements of the ISO 9001 standard.

This document has been carefully checked. However, Schaffner does not assume any liability for errors or inaccuracies.

||| SCHAFFNER

Schaffner EMV AG CH-4542 Luterbach, Switzerland
Tel: +41 32 6816 626 Fax: +41 32 6816 641 www.schaffner.com