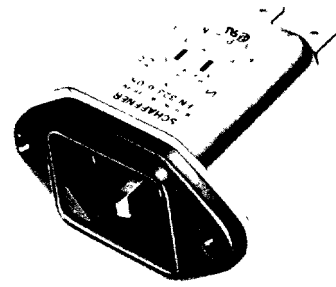


FN 323



IEC plug
Compact size
General equipment protection
Up to 10 A maximum
B-version: for medical equipment



Applications: where small filter size is required

| FN 323 | Rated current A | | Leakage current 220V/50Hz | Inductance mH | Connections | | Weight g | |
|----------------|-----------------|------|------------------------------|------------------|-------------|-------------------|-------------|---------------|
| | 40°C | 25°C | | | Input | Output | | |
| ♥ FN 323-1/01 | 1 | 12 | 2 x 0.21 mA | 2.8 | IEC 320 C14 | soldering lug | 40 | X X X X X X X |
| ♥ FN 323-1/05 | 1 | 12 | 2 x 0.21 mA | 2.8 | IEC 320 C14 | fast-on 6.3 x 0.8 | 40 | X X X X X X X |
| ♥ FN 323-3/01 | 3 | 3.6 | 2 x 0.21 mA | 0.75 | IEC 320 C14 | soldering lug | 40 | X X X X X X X |
| ♥ FN 323-3/05 | 3 | 3.6 | 2 x 0.21 mA | 0.75 | IEC 320 C14 | fast-on 6.3 x 0.8 | 40 | X X X X X X X |
| ♥ FN 323-6/01 | 6 | 7.3 | 2 x 0.21 mA | 0.3 | IEC 320 C14 | soldering lug | 40 | X X X X X X X |
| ♥ FN 323-6/05 | 6 | 7.3 | 2 x 0.21 mA | 0.3 | IEC 320 C14 | fast-on 6.3 x 0.8 | 40 | X X X X X X X |
| ♥ FN 323-10/01 | 10 | 12 | 2 x 0.21 mA | 0.16 | IEC 320 C14 | soldering lug | 40 | X X X X X O X |
| ♥ FN 323-10/05 | 10 | 12 | 2 x 0.21 mA | 0.16 | IEC 320 C14 | fast-on 6.3 x 0.8 | 40 | X O X X X O X |

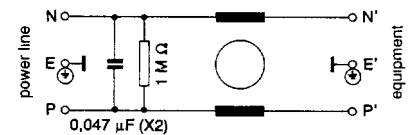
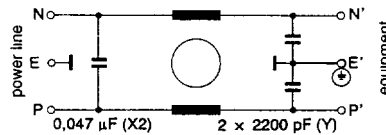
FN 323B

| | | | | | | | | |
|----------------|----|-----|----------|------|-------------|-------------------|----|---------------|
| FN 323B-1/01 | 1 | 12 | 2 x 2 µA | 2.8 | IEC 320 C14 | soldering lug | 45 | X X X X X O X |
| FN 323B-1/05 | 1 | 12 | 2 x 2 µA | 2.8 | IEC 320 C14 | fast-on 6.3 x 0.8 | 45 | X X X X X O X |
| ♥ FN 323B-3/01 | 3 | 3.6 | 2 x 2 µA | 0.75 | IEC 320 C14 | soldering lug | 45 | X X X X X O X |
| FN 323B-3/05 | 3 | 3.6 | 2 x 2 µA | 0.75 | IEC 320 C14 | fast-on 6.3 x 0.8 | 45 | X X X X X O X |
| FN 323B-6/01 | 6 | 7.3 | 2 x 2 µA | 0.3 | IEC 320 C14 | soldering lug | 45 | X X X X X O X |
| FN 323B-6/05 | 6 | 7.3 | 2 x 2 µA | 0.3 | IEC 320 C14 | fast-on 6.3 x 0.8 | 45 | X X X X X O X |
| FN 323B-10/01 | 10 | 12 | 2 x 2 µA | 0.16 | IEC 320 C14 | soldering lug | 45 | X X X X X O X |
| FN 323B-10/05 | 10 | 12 | 2 x 2 µA | 0.16 | IEC 320 C14 | fast-on 6.3 x 0.8 | 45 | X X X X X O X |

♥ stock types

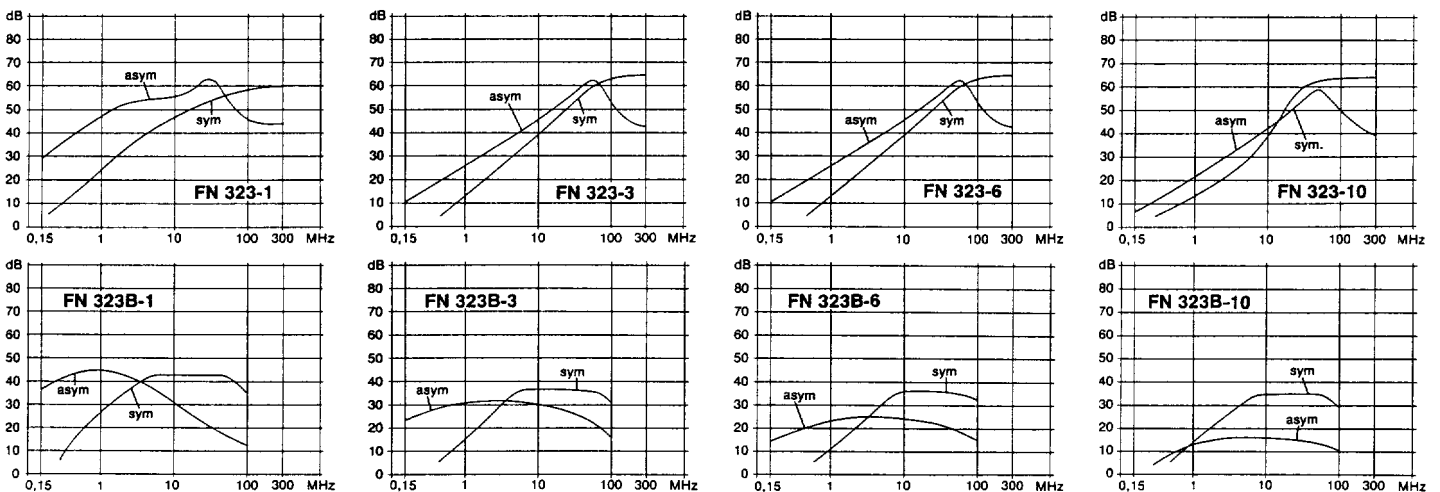
X = approved O = not approved
 * with 6 A approved

Operating voltage 250 V max.
 Operating frequency DC to 400 Hz max.
 Temperature range - 25°C to + 85°C
 Test voltage P/N → E 2 kV/50 Hz

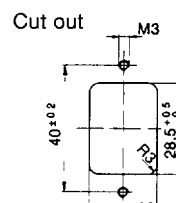
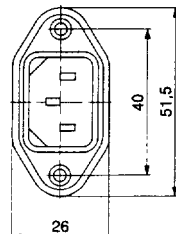
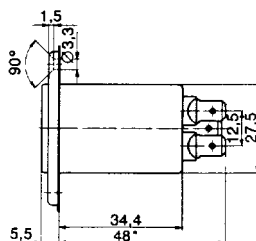


For further information, see general part.

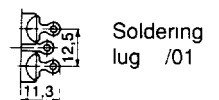
Insertion loss



Dimensions



Alternative connections



Option with discharge resistor (R)

* with soldering lug 46