

Single-phase chassis-mounting filter FN 2340

- Current ratings from 2 to 20A
- Improved differential mode performance
- UL-rated materials
- Nennströme von 2 bis 20A
- Erhöhte symmetrische Dämpfung
- UL konformes Material
- Courants de service de 2 à 20A
- Bonne atténuation en mode différentiel
- Matériaux UL



Filter selection table

Filter	Conn. / Housing		Current ratings @40°C (25°C) A	Inductance		Capacitance		Resistance R MΩ	Weight g
				L mH	L1 μH	Cx μF	Cy nF		
FN2340Y-2-06	Fast-on	H1	2 (2.25)	0.52	-	0.1	5.5	1	85
FN2340Y-3-06	Fast-on	H2	3 (3.35)	1.7	-	0.1	5.5	1	115
FN2340Y-5-06	Fast-on	H2	5 (5.6)	0.54	-	0.1	5.5	1	115
FN2340Y-10-06	Fast-on	J1	10 (11.2)	0.54	-	0.1	5.5	1	125
FN2340Y-20-06	Fast-on	K2	20 (22.4)	0.43	-	0.1	5.5	1	230
FN2340Y-20-10	Screw	K2	20 (22.4)	0.43	-	0.1	5.5	1	255

Approvals

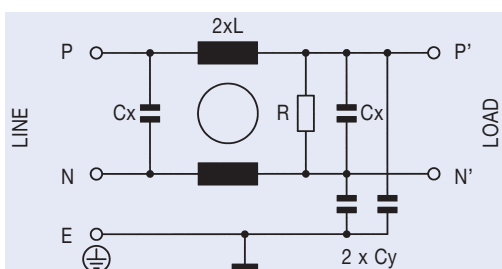


Additional specifications

Filter type	Maximum operating voltage		Operating frequency Hz	Hipot test voltage		Maximum leakage @ 230VAC/50Hz mA	Temperature range
	VAC	Hz		PN→E VAC	P→N VAC		
All types	250	50/60	DC to 400	2000	760	0.94	-25°C - +100°C

MTBF at 40°C, 230V, per Mil-HB-217F: 3,000,000 hours.

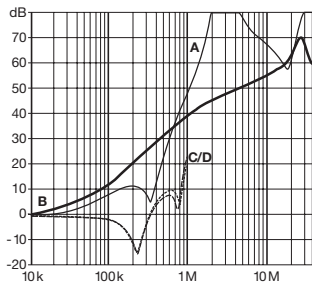
Electrical schematic



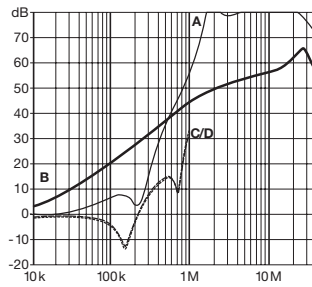
FN 2340 insertion loss

Per CISPR 17; A = 50Ω/50Ω sym, B = 50Ω/50Ω asym, C = 0.1Ω/100Ω sym, D = 100Ω/0.1Ω sym

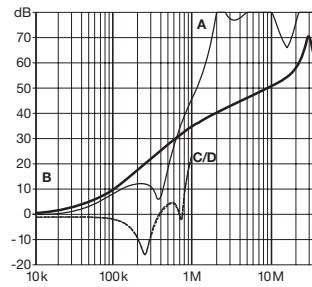
2 amp types



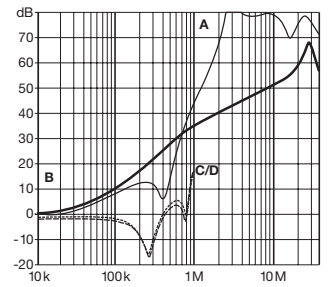
3 amp types



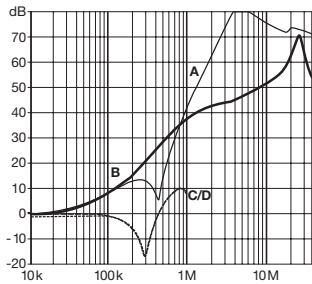
5 amp types



10 amp types



20 amp types

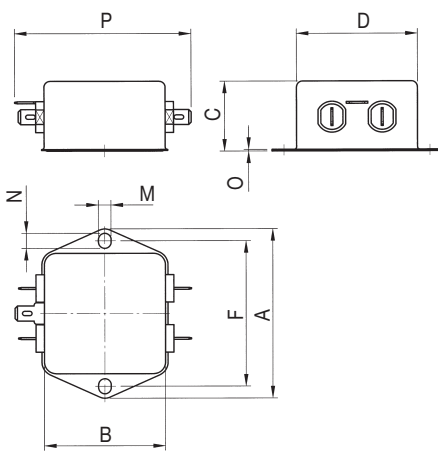


Mechanical data

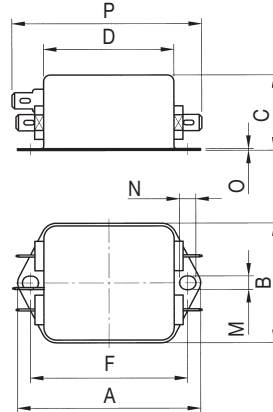
-2A, -10A, -20A (-06)

-3A, -5A

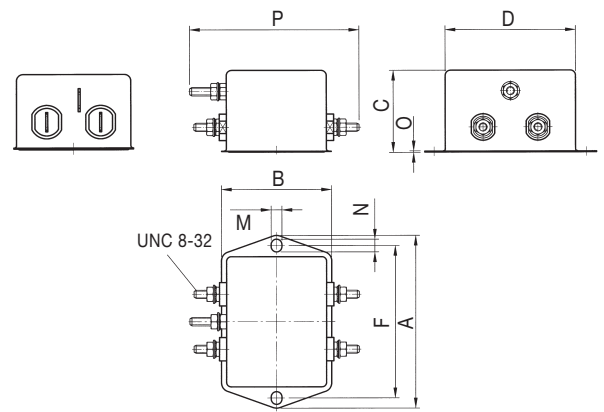
-20A (-10)



Housings H1, J1, K2



Housing H2



Housing K2

FN2340Y

	2A	3A	5A	10A	20A (-06)	20A (-10)	Tol. [mm]
A	71				85		± 0.5
B	46.6			50.5	54		± 0.5
C	22.3	29.3			40		± 0.5
D	50.5				64		± 0.5
F	61				75		± 0.3
M	5.3						± 0.1
N	6.3						± 0.1
O	0.7						± 0.1
P	67.6	74		73.6	72	83	± 1

All dimensions in mm; 1 inch = 25.4mm.