

(3,96 mm) .156"

FHP SERIES

POWER SOCKETS

SPECIFICATIONS

For complete specifications and recommended PCB layouts see www.samtec.com?FHP

Insulator Material: Black LCP

Contact Material: BeCu

Plating: Sn over 50µ" (1,27 µm) Ni

Operating Temp Range: -55°C to +105°C

Insertion Depth: (3,57 mm) .140" to (8,76 mm) .345" or pass-through from top

Wiping Distance: (0,38 mm) .015"

Insertion Force: (Single contact only) 56 oz (15,57 N) avg.

Withdrawal Force: (Single contact only) 52 oz (14,46 N) avg.

RoHS Compliant: Yes

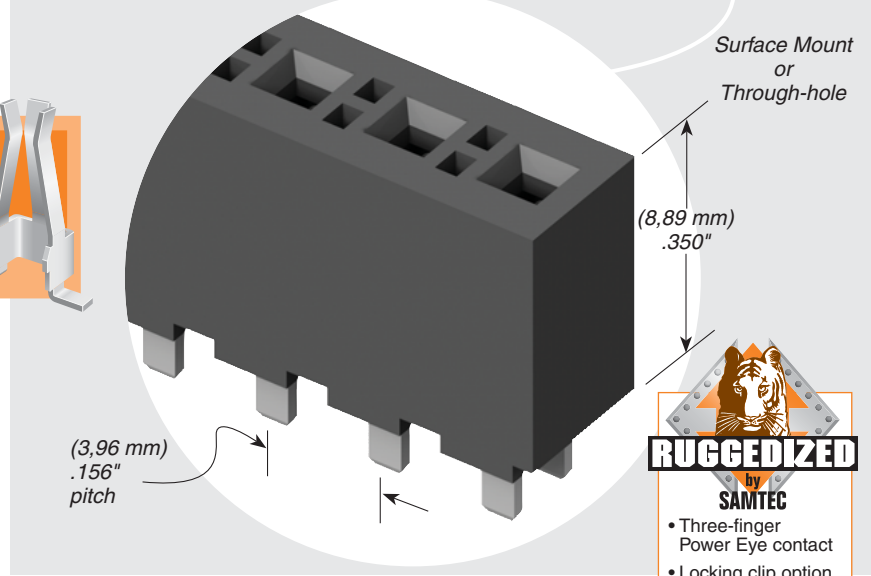
Processing: Lead-Free Solderable: Yes

SMT Lead Coplanarity: (0,10 mm) .004" max

Mates with:
FWJ, HFWJ,
JW



FHP/HFWJ	
PINS	CURRENT RATING (PER CONTACT)
1	13.1 A
2	11.2 A
3	10.3 A
4	9.2 A
ALL	6.7 A



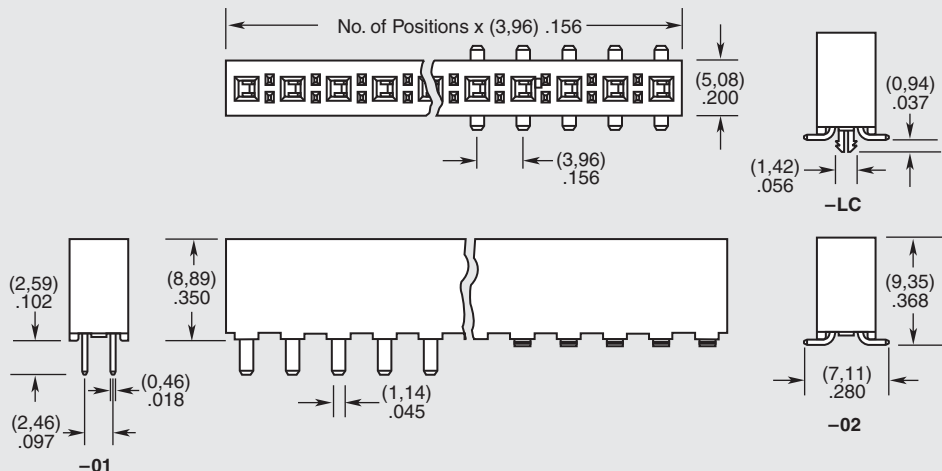
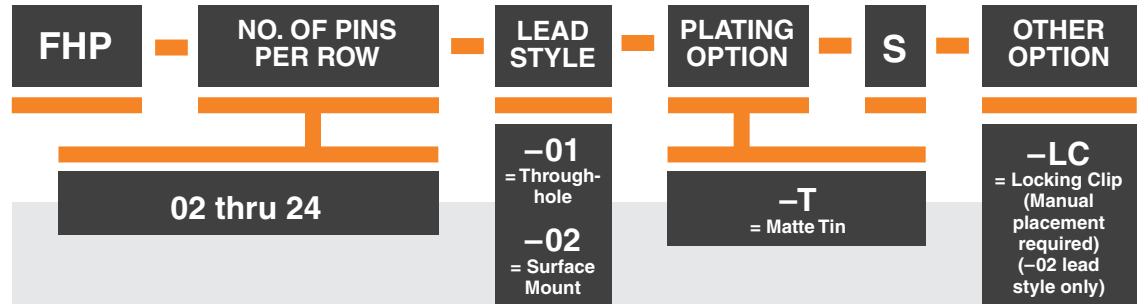
RECOGNITIONS

For complete scope of recognitions see www.samtec.com/quality



ALSO AVAILABLE (MOQ Required)

- Alignment pins
- Contact Samtec.



Note: Some lengths, styles and options are non-standard, non-returnable.