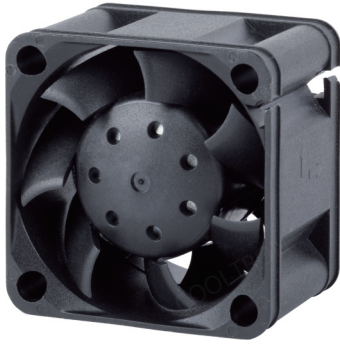


# DC AXIAL FAN 40x40x28mm (Stator Outlet Blade)



Housing/Blade: Thermoplastic PBT, UL 94V-0  
 Insulation Resistance: 10MΩ, 500VDC/min between bare wire and frame  
 Dielectric Strength: 5mA max. 500VAC/min between bare wire and frame  
 Operation Temperature: -20°C~70°C(Humidity 15%-90%RH)  
 Storage Temperature: -40°C~85°C(Humidity 15%-90%RH)  
 Lead Wire: UL Type #26 AWG  
 Weight: 45 g



**ES** **IP** **SF**

- High Airflow
- High Static Pressure

Model Number		Voltage (VDC)	Op. Voltage (VDC)	AirFlow (CFM)	Static Pres. (mm-H <sub>2</sub> O)	Noise (dBA)	Speed (RPM)	Current (mA)	Power (W)	Available Bearing	Additional Function (See Page 3)	Curves
FD4028B12W3-11	★	12	7.0~13.2	10.50	8.00	24.10	5,000	90	1.08	B	P,X,Y	①
FD4028B12W5-11	★	12	7.0~13.2	13.20	12.20	34.00	7,000	150	1.80	B	P,X,Y	②
FD4028B12W7-11	★	12	7.0~13.2	14.60	14.80	36.90	8,000	180	2.16	B	P,X,Y	③
FD4028B12W8-11	★	12	7.0~13.2	19.30	26.60	46.30	11,000	460	5.52	B	P,X,Y	④
FD4028B12W9-11	★	12	7.0~13.2	21.70	32.40	48.80	13,000	550	6.60	B	P,X,Y	⑤
FD4028B24W3-11	★	24	12.0~26.4	10.50	8.00	24.10	5,000	80	1.92	B	P,X,Y	①
FD4028B24W5-11	★	24	12.0~26.4	13.20	12.20	34.00	7,000	85	2.04	B	P,X,Y	②
FD4028B24W7-11	★	24	12.0~26.4	14.60	14.80	36.90	8,000	160	3.84	B	P,X,Y	③
FD4028B24W8-11	★	24	12.0~26.4	19.30	26.60	46.30	11,000	280	6.72	B	P,X,Y	④
FD4028B24W9-11	★	24	12.0~26.4	21.70	32.40	48.80	13,000	430	10.32	B	P,X,Y	⑤

● If model depicts "★", auto restart protection function built in.

Specifications are subject to change without notice

