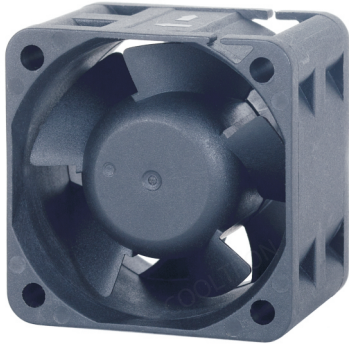


# DC AXIAL FAN 40x40x28mm (Stator Outlet Blade)



Housing/Blade: Thermoplastic PBT, UL 94V-0  
 Insulation Resistance: 10MΩ, 500VDC/min between bare wire and frame  
 Dielectric Strength: 5mA max. 500VAC/min between bare wire and frame  
 Operation Temperature: -20°C~70°C(Humidity 15%-90%RH)  
 Storage Temperature: -40°C~85°C(Humidity 15%-90%RH)  
 Lead Wire: UL Type #26 AWG  
 Weight: 40 g



**ES** **IP** **SF**

- High Airflow
- High Static Pressure

Model Number	Voltage (VDC)	Op. Voltage (VDC)	Air Flow (CFM)	Static Pres. (mm-H <sub>2</sub> O)	Noise (dBA)	Speed (RPM)	Current (mA)	Power (W)	Available Bearing	Additional Function (See Page 3)	Curves
FD4028B12W3-82	★ 12	6.0~13.8	9.60	6.80	33.00	6,500	60	0.72	B	P,M,U,X	①
FD4028B12W5-82	★ 12	6.0~13.8	11.80	9.90	36.90	8,000	100	1.20	B	P,M,U,X	②
FD4028B12W7-82	★ 12	6.0~13.8	14.10	14.10	41.90	9,500	200	2.40	B	P,M,U,X	③
FD4028B12W8-82	★ 12	6.0~13.8	16.60	18.90	45.80	11,000	240	2.88	B	P,M,U,X	④
FD4028B12W9-82	★ 12	6.0~13.8	19.20	24.20	48.80	12,500	380	4.56	B	P,M,U,X	⑤
FD4028B12W11-82	★ 12	6.0~13.8	21.60	31.00	50.20	14,000	480	5.76	B	P,M,U,X	⑥
FD4028B24W3-82	★ 24	12.0~27.6	9.60	6.80	33.00	6,500	40	0.96	B	P,M,U,X	①
FD4028B24W5-82	★ 24	12.0~27.6	11.80	9.90	36.90	8,000	60	1.44	B	P,M,U,X	②
FD4028B24W7-82	★ 24	12.0~27.6	14.10	14.10	41.90	9,500	80	1.92	B	P,M,U,X	③
FD4028B24W8-82	★ 24	12.0~27.6	16.60	18.90	45.80	11,000	130	3.12	B	P,M,U,X	④
FD4028B24W9-82	★ 24	12.0~27.6	19.20	24.20	48.80	12,500	230	5.52	B	P,M,U,X	⑤
FD4028B24W11-82	★ 24	12.0~27.6	21.60	31.00	50.20	14,000	300	7.20	B	P,M,U,X	⑥

● If model depicts "★", auto restart protection function built in.

Specifications are subject to change without notice

