

ORDERING CODE: F C E 1 7 - E 0 9 P A - 4 4 0 G

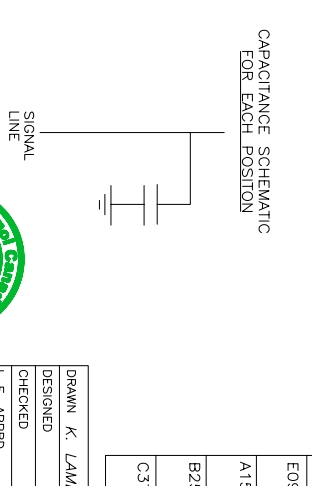
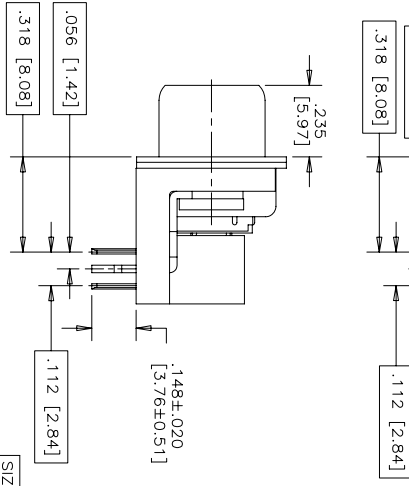
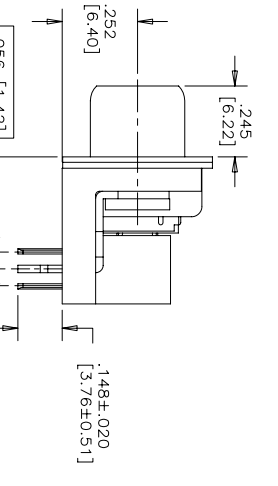
SERIES FCE17=FILTERED D-SUB, RSHS
 SIZE/NUMBER OF CONTACTS E09, A15, B25, OR C37
 CONNECTOR STYLE
 P=PIN
 S=SOCKET
 TERMINATION TYPE A=.318" [8.08] FOOTPRINT

CONTACT FINISH/GOLD THICKNESS
 NO DIGIT=STANDARD 15 MICRONS
 [0.38 MICRONS] GOLD ON MATING AREA
 G=50 MICRONS [1.27 MICRONS] GOLD ON MATING AREA
 MODIFIER 0=STANDARD

FILTER CAPACITANCE
 D=50 pF 7=1200 pF
 B=100 pF 8=1300 pF
 F=180 pF J=1500 pF
 E=2200 pF F=330 pF
 1=470 pF 9=5600 pF
 4=820 pF 8=47000 pF
 5=1000 pF N=NO FILTERS

MOUNTING
 2=.120 [3.05] DIA THROUGH HOLE
 3=#4-40 UNC SELF-LOCKING THREAD
 4=#4-40 UNC THROUGH HOLE
 6=M3 x 0.5 THREAD
 E=CODE 4 MOUNTING WITH #4-40 UNC HEX JACK SOCKETS SUPPLIED.
 F=#4-40 UNC FIXED ROUND JACK SOCKET

REFER TO AMPHENOL CATALOGUE FOR FILTER PERFORMANCE CHARACTERISTICS



- NOTES:
1. MATERIALS: ALL MATERIALS ARE ROHS COMPLIANT.
 - SHELL: STEEL, TIN PLATED
 - CONTACTS: PHOSPHOR BRONZE, PLATED WITH GOLD OVER 50U [1.27 MICRONS] MINIMUM NICKEL IN THE MATING AREA AND 100U [2.54 MICRONS] MINIMUM MATTE TIN ON THE TAILS.
 - INSULATOR: ENGINEERING THERMOPLASTIC, GLASS REINFORCED, UL FLAMMABILITY RATING 94V-0. COLOUR: BLACK
 - BOARDLOCK: COPPER ALLOY, TIN PLATED
 - MOUNTING HARDWARE: STEEL OR COPPER ALLOY, TIN OR NICKEL PLATED.
 2. CONTACT RESISTANCE: 15 MILLIOHMS MAXIMUM
 3. INSULATION RESISTANCE: 3000 MEGOHMS MINIMUM
 4. CURRENT RATING: 5 AMPS MAXIMUM
 5. OPERATING TEMPERATURE: -40°C TO 85°C
 6. TOLERANCE UNLESS INDICATED OTHERWISE: ±.005 [0.13]

| SIZE | STYLE | A±.015 [0.38] | B±.005 [0.13] | C±.005 [0.13] | D±.005 [0.13] | E BSC. [4.32] |
|------|-------|---------------|---------------|---------------|---------------|---------------|
| E09 | PIN | 1.213 [30.81] | -.666 [16.92] | .984 [24.99] | 1.312 [33.32] | 1.097 [27.72] |
| A15 | PIN | 1.541 [39.14] | -.994 [25.25] | 1.312 [33.32] | 1.756 [44.61] | 1.920 [48.78] |
| B25 | PIN | 2.088 [53.04] | 1.534 [38.96] | 1.852 [47.04] | 2.304 [58.53] | 2.500 [63.50] |
| C37 | PIN | 2.729 [69.32] | 2.182 [55.42] | 2.500 [63.50] | 3.304 [83.91] | 3.500 [88.90] |

| | | | |
|-----------------|-----------|-------|----------|
| DRAWN | K. LAM/BE | DATE | Apr06/06 |
| DESIGNED | | | |
| CHECKED | | | |
| L. E. APPRD. | | | |
| O. A. APPRD. | | | |
| ENG. REL. NO. | | | |
| REF. EAR #12701 | | | |
| DWG. APPRD. | | | |
| SCALE | 3/1 | WT. | |
| INCHES [mm] | 03554 | SURF. | |

Amphenol Canada Corp.

FCE17 SERIES FILTERED D-SUB CONNECTOR, PIN & SOCKET, RIGHT ANGLE .318 [8.08] F/P, PLASTIC MOUNTING BRACKET & BOARDLOCK, ROHS COMPLIANT

DWG DRAWING NO. P-FCE17-XXXXA-XXOX

REV. D

THIS DOCUMENT CONTAINS PROPRIETARY INFORMATION AND SUCH INFORMATION MAY NOT BE DISCLOSED TO OTHERS FOR ANY PURPOSE OR USED FOR MANUFACTURING PURPOSES WITHOUT WRITTEN PERMISSION FROM AMPHENOL CANADA CORP.

