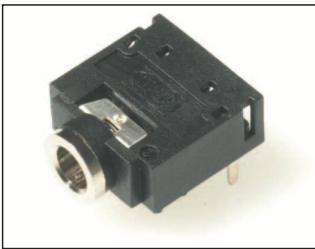
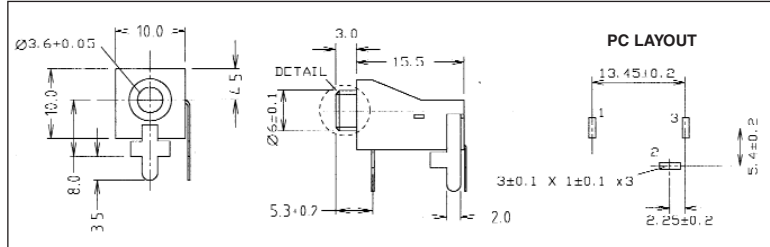




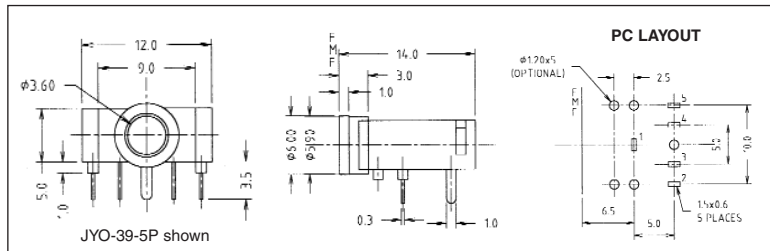
JYO-36A mono switched 3.5mm Jack Socket. Stand-off right angle PCB mounting with threadless nose.

JYO-36A (FC68130)



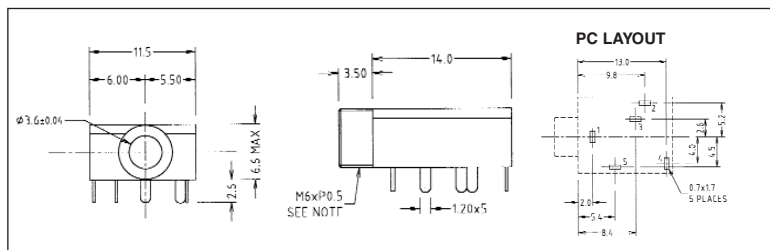
JYO-39-3P stereo unswitched 3.5mm Jack Socket. JYO-39-5P stereo switched version. Right angle PCB mounting.

**JYO-39-3P (FC68131)
JYO-39-5P (FC68133)**



JYS-35 stereo switched 3.5mm Jack Socket. Right angle PCB mounting. Supplied with ring nut.

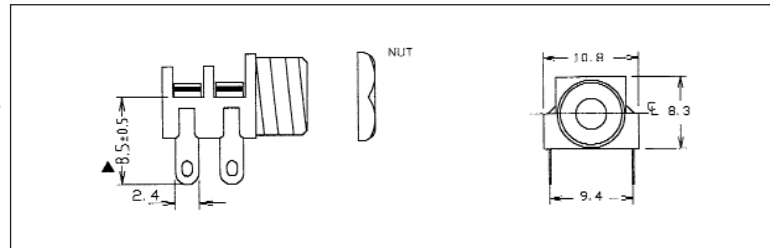
JYS-35 (FT6320)



S6/BB mono switched 3.5mm Jack Socket. Panel mounting with solder tags. Also available with Special 'C' Contact to suit Far Eastern plugs.

S6/BB (CL1382)

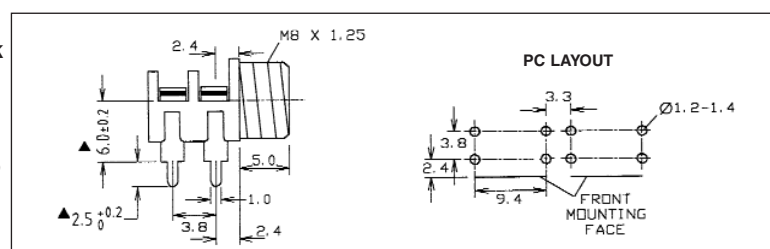
Supplied with Nickel Plated Hex Nut.



S6/BB PC mono switched 3.5mm Jack Socket. Right angle PCB mounting. Also available with Special 'C' Contact to suit Far Eastern plugs.

S6/BB PC (CL1384)

Supplied with Nickel Plated Hex Nut.



Refer to Sales Office for SMD versions.