

IEC Inlet with Line Filter

- IEC320-C14 Filtered Inlet
- Screw Mount & Snap-in Versions
- Compact Design
- ITE Applications
- 1, 3, 6 & 10A Rating
- 6.3 x 0.8mm Faston Terminals
- Bleed Resistor
- Shielded Metal Body
- Wide Operating Temperature Range
- 3 Year Warranty

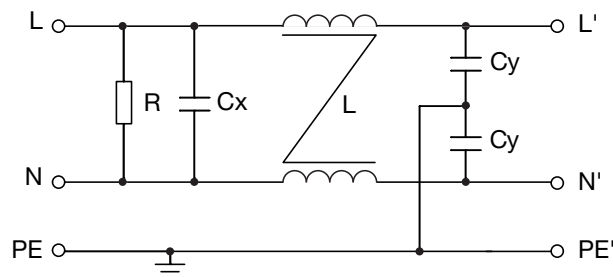


The FASA combines an EMI filter with an IEC320-C14 inlet, to provide excellent attenuation in a compact module. They are available as either snap-in (FASASxxPFR) or screw mount (FASASxxSFR) for consumer, commercial, ITE & instrumentation type applications. When fitted to mains powered equipment, they provide excellent attenuation to conducted electro-magnetic interference from the mains supply, whilst reducing any conducted emissions from within the equipment onto the mains supply. Suitable for class I appliances, all models feature a shielded metal body, and are fitted with a bleed resistor to safely discharge the filter capacitors when power is disconnected. Safety approvals are EN60939-2 for passive filters & ANSI/UL1283 for EMI filters. They feature a wide operating temperature range of -40°C to +110°C with full power operation up to +50°C.

Specifications

| Characteristics | Minimum | Typical | Maximum | Units | Notes and Conditions |
|-----------------------|---|---------|---------|-------|--|
| Rated Voltage | | | 250 | VAC | |
| Input Frequency | DC | | 400 | Hz | |
| Rated Current | 1 | | 10 | A | See models and ratings table |
| Earth Leakage Current | 0.25 | | 0.48 | mA | See models and ratings table |
| MTBF | 1.75 | | | MHrs | MIL-HDBK 217F, 250 VAC @ 40°C |
| Flammability Rating | UL94V-2 | | | | |
| Temperature Operating | -40 | | 110 | °C | See derating curve |
| Safety Approvals | EN60939-2 | | | | Passive filter units for EMI suppression |
| | ANSI/UL1283 | | | | Electromagnetic Interference Filters |
| Terminals | Faston 6.3 x 0.8mm straight | | | | |
| Protection Class | Suitable for appliances with protection Class I | | | | |
| Dielectric Strength | | 1500 | | VAC | |

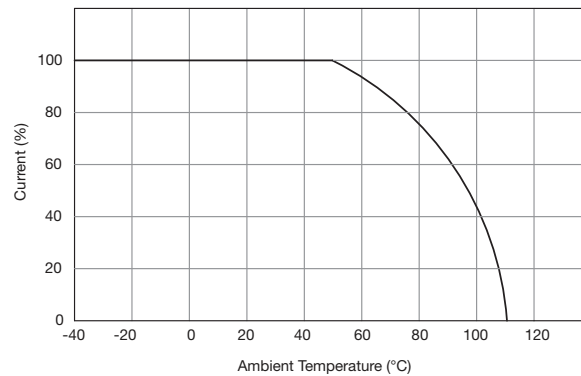
Electrical Schematic



Models & Ratings

| Rated Current at 50 °C | Leakage Current | | Inductance at 10 kHz, 0.25 V L | Capacitance | | Resistance | Weight | Application | Mounting | Filter |
|------------------------|-----------------|----------------|--------------------------------|-------------|------------|------------|--------|-------------|----------|------------|
| | 115 VAC/ 60 Hz | 250 VAC/ 50 Hz | | Cx | Cy | | | | | |
| 1 A | 0.25 mA | 0.45 mA | 2 x 6.5 mH | 0.1 µF | 2 x 2.2 nF | 1 MΩ | 38 g | ITE | Screw | FASAS01SFR |
| 3 A | 0.25 mA | 0.45 mA | 2 x 2.5 mH | 0.1 µF | 2 x 2.2 nF | 1 MΩ | 37 g | ITE | Screw | FASAS03SFR |
| 6 A | 0.25 mA | 0.45 mA | 2 x 0.8 mH | 0.1 µF | 2 x 2.2 nF | 1 MΩ | 39 g | ITE | Screw | FASAS06SFR |
| 10 A | 0.25 mA | 0.45 mA | 2 x 0.2 mH | 0.1 µF | 2 x 2.2 nF | 1 MΩ | 39 g | ITE | Screw | FASAS10SFR |
| 1 A | 0.25 mA | 0.45 mA | 2 x 6.5 mH | 0.1 µF | 2 x 2.2 nF | 1 MΩ | 39 g | ITE | Snap-In | FASAS01PFR |
| 3 A | 0.25 mA | 0.45 mA | 2 x 2.5 mH | 0.1 µF | 2 x 2.2 nF | 1 MΩ | 39 g | ITE | Snap-In | FASAS03PFR |
| 6 A | 0.25 mA | 0.45 mA | 2 x 0.8 mH | 0.1 µF | 2 x 2.2 nF | 1 MΩ | 41 g | ITE | Snap-In | FASAS06PFR |
| 10 A | 0.25 mA | 0.45 mA | 2 x 0.2 mH | 0.1 µF | 2 x 2.2 nF | 1 MΩ | 41 g | ITE | Snap-In | FASAS10PFR |

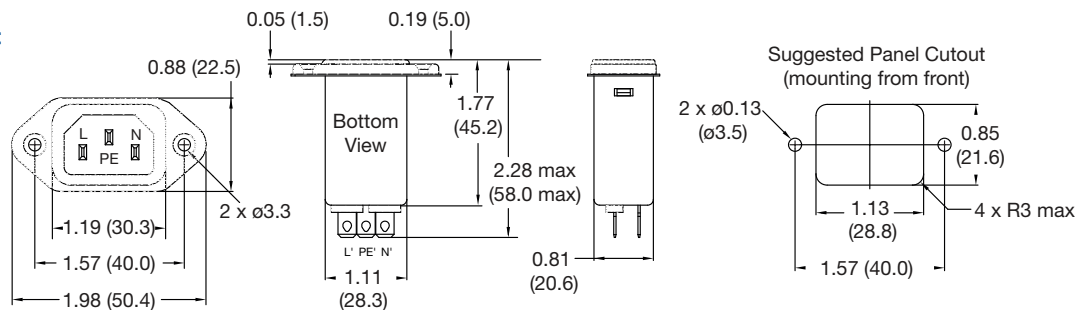
Thermal Derating



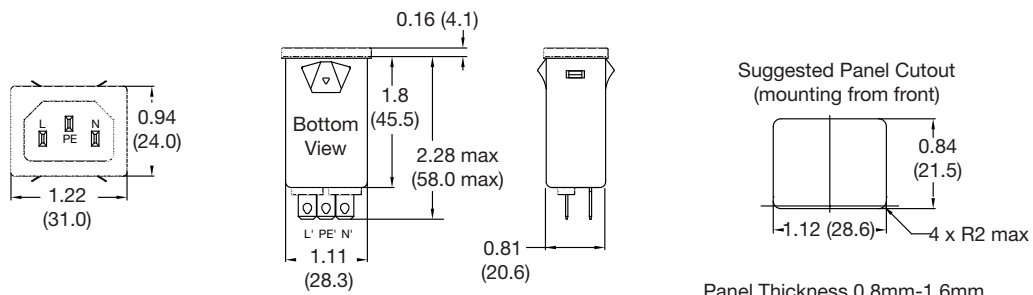
Mechanical Details

All dimensions in inches (mm)

Screw Mount



Snap-In Mount

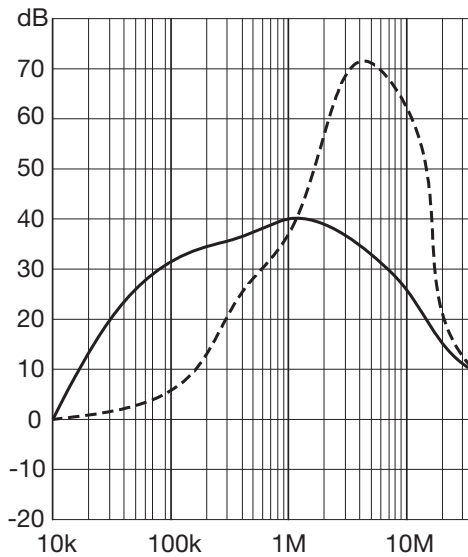


Typical Attenuation Curves

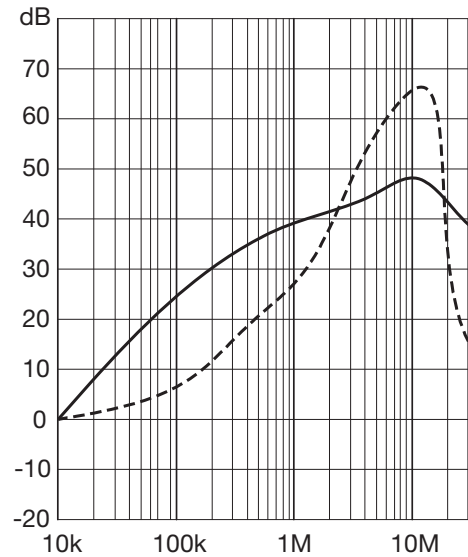
Per CISPR 17, 50 Ω system

- Asymmetrical (Common Mode)
- - - - - Symmetrical (Differential Mode)

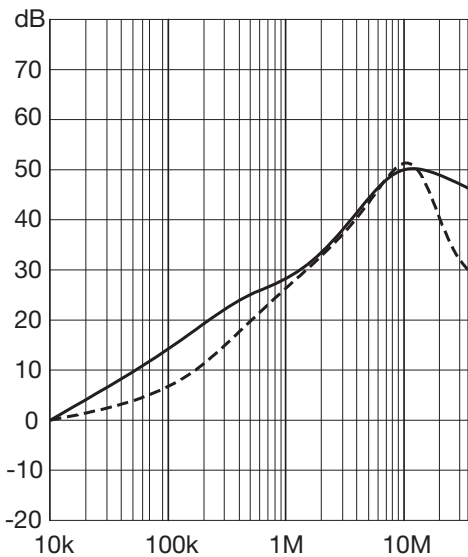
FASAS01SFR/PFR



FASAS03SFR/PFR



FASAS06SFR/PFR



FASAS10SFR/PFR

