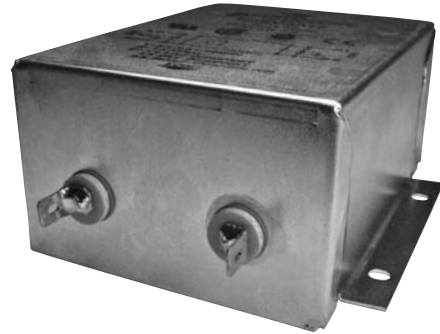


F2800 RFI Filters

High Performance

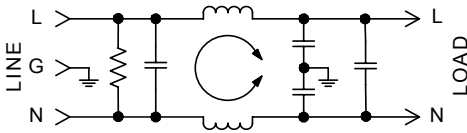
SINGLE PHASE FILTERS



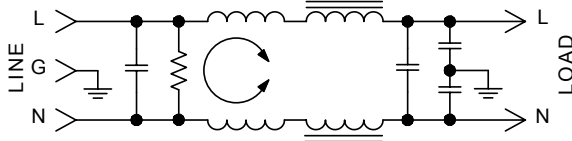
Features:

- Designed for VDE "A" and FCC "B" Switching Power Supply Applications
- Low-Leakage Current
- Compact Case Sizes in Current Ratings up to 15A
- Effective Reduction of Common Mode and Differential Mode Noise from 100KHz to 30MHz

F2800 Simplified Schematic 3 & 6Amp



F2800 Simplified Schematic 10 & 15Amp



Specifications:

Rated Voltage: 250VAC Maximum - 50/60 Hz

Rated Current:	115VAC	250VAC
	3A	1.5A
	6A	4A
	10A	6A
	15A	12A

Current Overload: 6X for 8 seconds

Hi-Pot Test (1 min):

Line to Ground	1500VAC
Line to Line	1768VDC

Insulation Resistance: $9 \times 10^9 \Omega$ at 100VDC

Ambient Temperature: 40°C Max. at rated current

Humidity Range: 0% to 95% R.H.

Termination:

A: QC – Quick Connect
B: Wire

Maximum Leakage Current:

Each Line to Ground	F2800
115VAC, 60Hz:	0.25mA
250VAC, 50Hz:	0.40mA

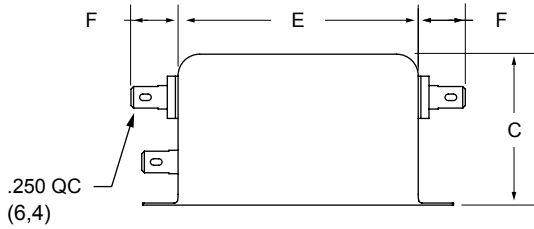
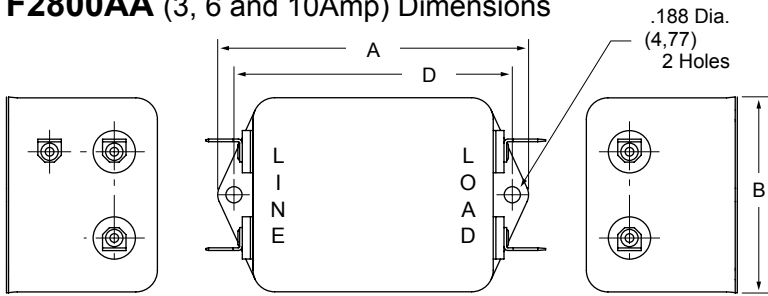
Agency Approvals:



Nominal Current Rating	Part Number	Termination Line/Load	MINIMUM INSERTION LOSS - dB (50 ohm Circuit)										
			MODE	Frequency - MHz									
				.01	.05	.15	.50	1.0	5.0	10	30		
3A	F2800AA03	QC/QC	Common	10	30	35	35	35	40	45	50		
	F2800BB03	Wire/Wire	Differential	5	25	50	60	65	50	45	45		
6A	F2800AA06	QC/QC	Common	5	20	30	35	40	40	40	50		
	F2800BB06	Wire/Wire	Differential	5	10	40	60	60	50	50	45		
10A	F2800AA10	QC/QC	Common	5	15	25	30	35	40	45	50		
	F2800BB10	Wire/Wire	Differential	7	20	50	60	60	60	60	55		
15A	F2800AA15	QC/QC	Common	8	21	29	33	36	38	45	50		
	F2800BB15	Wire/Wire	Differential	10	30	70	70	70	70	70	60		

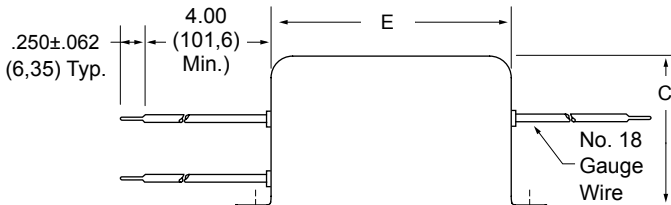
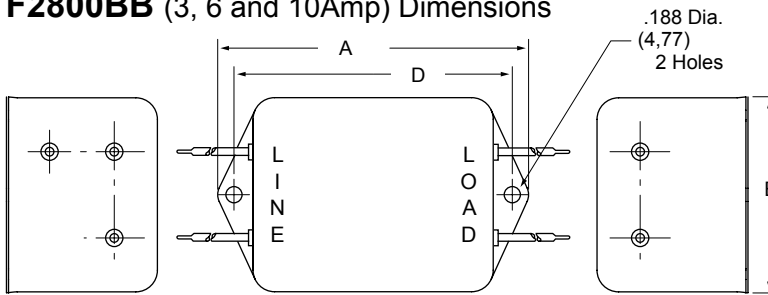


F2800AA (3, 6 and 10Amp) Dimensions



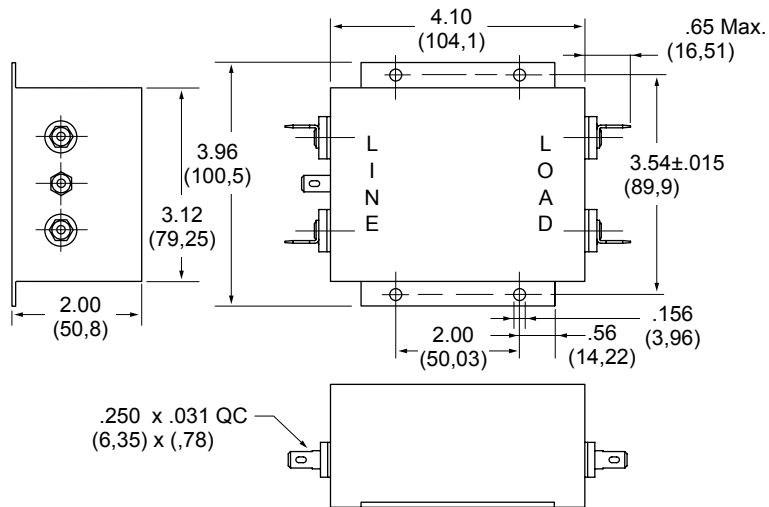
Amps	A	B	C	D	E	F
3A	3.310 (84,1)	2.000 (50,8)	1.500 (38,2)	2.940 (74,7)	2.500 (63,5)	.550 (14,0)
6A	3.310 (84,1)	2.000 (50,8)	1.500 (38,2)	2.940 (74,7)	2.500 (63,5)	.550 (14,0)
10A	4.44 (113)	2.250 (57,1)	1.750 (44,4)	4.063 (103,2)	3.630 (92,2)	.650 (16,5)

F2800BB (3, 6 and 10Amp) Dimensions



Amps	A	B	C	D	E
3A	3.310 (84,1)	2.000 (50,8)	1.500 (38,1)	2.940 (74,7)	2.500 (63,5)
6A	3.310 (84,1)	2.000 (50,8)	1.500 (38,1)	2.940 (74,7)	2.500 (63,5)
10A	4.690 (119)	2.250 (57,1)	1.750 (44,4)	4.063 (103,2)	3.630 (92,2)

**F2800AA
F2800BB
(15Amp)
Dimensions**



Dimensions are in inches and millimeters unless otherwise specified. Values in parentheses are metric equivalents.

