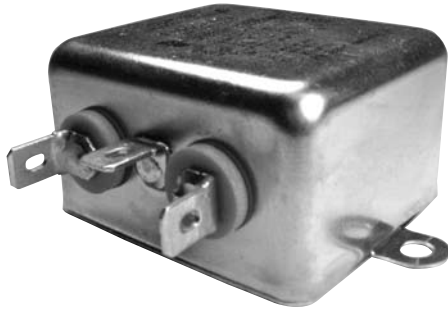


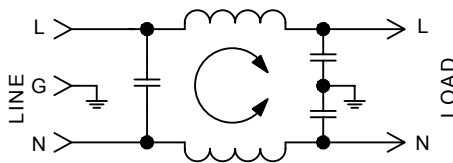
F1900 RFI Filters



Features:

- Designed for Equipment Requiring UL1410 Approval (Consumer Electronics)
- Utilizes UL1414 Approved Components
- Greater Differential Mode Protection

F1900 Simplified Schematic



Specifications:

Rated Voltage: 125VAC Maximum - 50/60 Hz

Rated Current: 120VAC
3A
6A

Current Overload: 6X for 8 seconds

Hi-Pot Test (1 min):

Line to Ground 1500VAC

Line to Line 1768VDC

Insulation Resistance: $9 \times 10^9 \Omega$ at 100VDC

Ambient Temperature: 40°C Max. at rated current

Humidity Range: 0% to 95% R.H.

Termination:

A: QC – Quick Connect

Maximum Leakage Current:

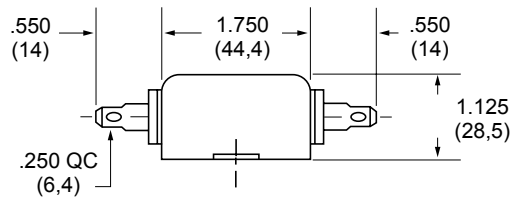
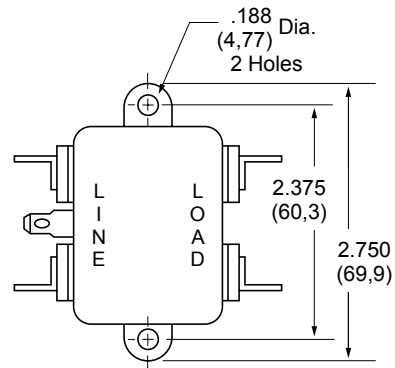
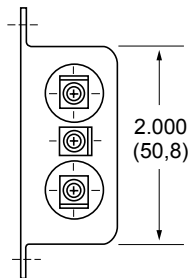
Each Line to Ground **F1900**
115VAC, 60Hz: 0.25mA

Agency Approvals:



F1900AA

(3 and 6Amp) Dimensions



| Nominal Current Rating | Part Number | Termination Line/Load | MINIMUM INSERTION LOSS - dB (50 ohm Circuit) | | | | | | |
|------------------------|-------------|-----------------------|--|-----------------|-----|-----|-----|----|----|
| | | | MODE | Frequency - MHz | | | | | |
| | | | | .15 | .50 | 1.0 | 5.0 | 10 | 30 |
| 3A | F1900AA03 | QC/QC | Common | 20 | 30 | 37 | 50 | 50 | 50 |
| | | | Differential | 7 | 19 | 28 | 50 | 57 | 70 |
| 6A | F1900AA06 | QC/QC | Common | 10 | 20 | 27 | 45 | 45 | 45 |
| | | | Differential | 8 | 18 | 24 | 45 | 52 | 64 |

NOTE: Other combinations of terminals may be specified on special order.

Dimensions are in inches and millimeters unless otherwise specified. Values in parentheses are metric equivalents.



Curtis Industries
A Division of Powers Holdings, Inc.

1-800-657-0853