

# F1400 RFI Filters

High Performance

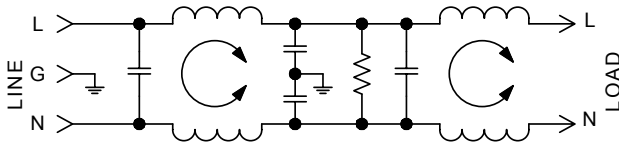
SINGLE PHASE FILTERS



## Features:

- High Peak Current Design — High Insertion Loss for Switching Power Supply Emissions
- Low-Leakage Current
- Compact Case Sizes in 6 and 10Amp Models
- Available with Integral IEC Connector in 3 and 6Amp Models

## F1400 Simplified Schematic



## Specifications:

**Rated Voltage:** 250VAC Maximum - 50/60 Hz

**Rated Current:**

115VAC	250VAC
3A	1.5A
6A	4A
10A	6A

**Current Overload:** 6X for 8 seconds

### Hi-Pot Test (1 min):

Line to Ground	1500VAC
Line to Line	1768VDC

**Insulation Resistance:**  $9 \times 10^9 \Omega$  at 100VDC

**Ambient Temperature:** 40°C Max. at rated current

**Humidity Range:** 0% to 95% R.H.

### Termination:

- A: QC – Quick Connect
- B: Wire
- C: IEC Receptacle

### Maximum Leakage Current:

Each Line to Ground	<b>F1400</b>
115VAC, 60Hz:	0.25mA
250VAC, 50Hz:	0.40mA

### Agency Approvals:

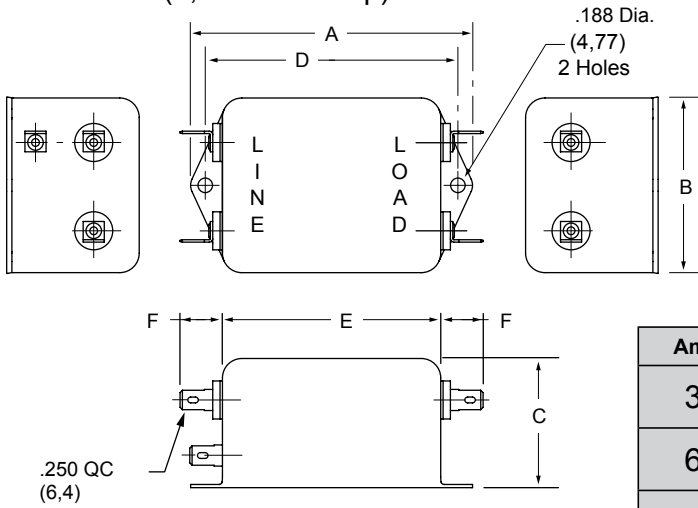


Nominal Current Rating	Part Number	Termination Line/Load	MINIMUM INSERTION LOSS - dB (50 ohm Circuit)						
			MODE	Frequency - MHz					
				.15	.50	1.0	5.0	10	30
3A	F1400AA03 F1400BB03 F1400CA03	QC/QC Wire/Wire IEC/QC	Common	58	65	65	65	60	44
			Differential	40	60	65	65	65	60
6A	F1400AA06 F1400BB06 F1400CA06	QC/QC Wire/Wire IEC/QC	Common	58	65	65	65	60	54
			Differential	36	55	60	60	55	50
10A	F1400AA10 F1400BB10	QC/QC Wire/Wire	Common	56	65	65	65	60	54
			Differential	40	50	60	65	65	60

NOTE: Other combinations of terminals may be specified on special order.



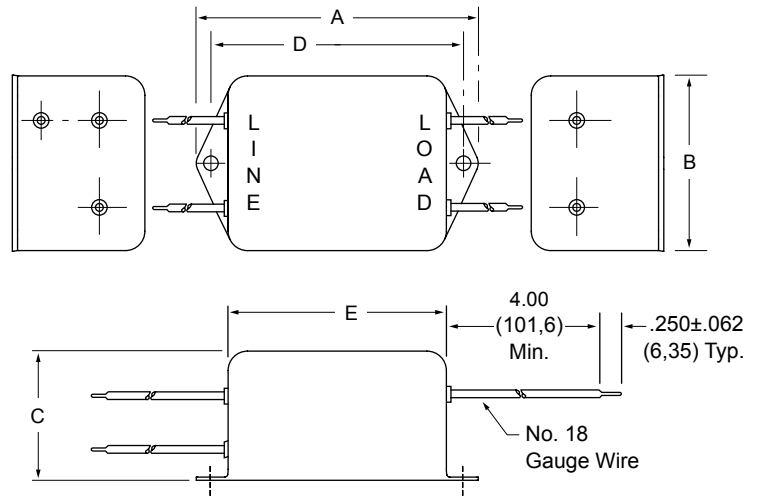
**F1400AA (3, 6 and 10Amp) Dimensions**



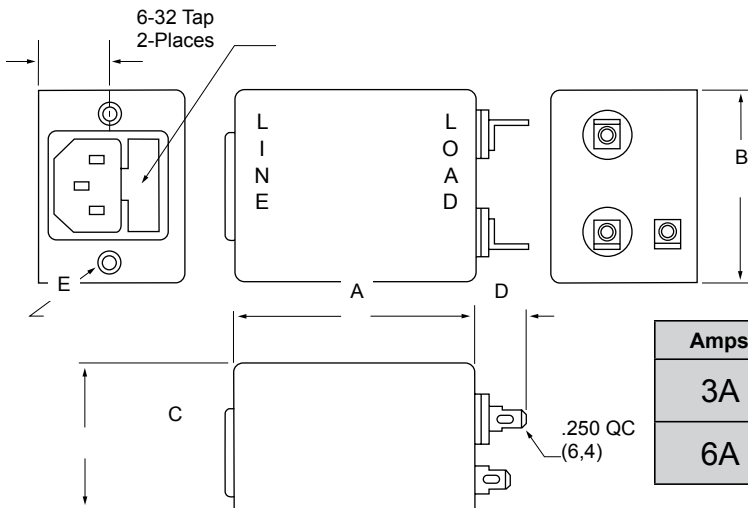
Amps	A	B	C	D	E	F
3A	3.310 (84,1)	2.000 (50,8)	1.500 (38,2)	2.940 (74,7)	2.500 (63,5)	.550 (14,0)
6A	3.310 (84,1)	2.000 (50,8)	1.500 (38,2)	2.940 (74,7)	2.500 (63,5)	.550 (14,0)
10A	4.70 (119,4)	2.250 (57,1)	1.750 (44,4)	4.250 (107,9)	3.750 (95,3)	.550 (14,0)

**F1400BB (3, 6 and 10Amp) Dimensions**

Amps	A	B	C	D	E
3A	3.310 (84,1)	2.000 (50,8)	1.500 (38,1)	2.940 (74,7)	2.500 (63,5)
6A	3.310 (84,1)	2.000 (50,8)	1.500 (38,1)	2.940 (74,7)	2.500 (63,5)
10A	4.70 (119,4)	2.250 (57,1)	1.750 (44,4)	4.250 (107,9)	3.750 (95,3)



**F1400CA (3 and 6Amp) Dimensions**



Refer to Page 36  
for Standard  
Mounting Cutouts

Amps	A	B	C	D	E
3A	2.880 (73,1)	2.120 (53,8)	1.500 (38,1)	.550 (14,0)	.565 (14,3)
6A	2.880 (73,1)	2.120 (53,8)	1.500 (38,1)	.550 (14,0)	.565 (14,3)

