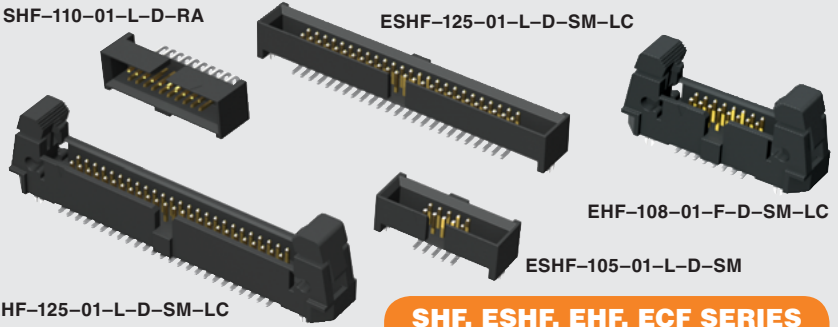


SHF-110-01-L-D-RA

ESHF-125-01-L-D-SM-LC



EHF-108-01-F-D-SM-LC

ESHF-105-01-L-D-SM

EHF-125-01-L-D-SM-LC

SHF, ESHF, EHF, ECF SERIES

(1,27 mm) .050"

SHROUDED & EJECTOR IDC HEADER

SHF, ESHF Mates with:
FFSD, FFTP (SHF)

EHF Mates with:
FFSD*, FFTP

SPECIFICATIONS

For complete specifications see www.samtec.com?SHF, www.samtec.com?ESHF or www.samtec.com?EHF

Insulator Material:
Black Liquid Crystal Polymer

Terminal Material:
Phosphor Bronze

Plating:
Sn or Au over

50µ" (1,27 µm) Ni

Operating Temp Range:
-55°C to +125°C

RoHS Compliant:
Yes

Processing:
Lead-Free Solderable:

Yes

SMT Lead Coplanarity:
(0,10 mm) .004" max

RECOGNITIONS

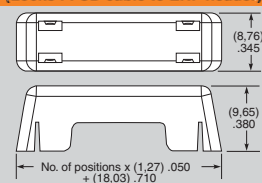
For complete scope of recognitions see www.samtec.com/quality



ALSO AVAILABLE (MOQ Required)

- Other sizes
- Contact Samtec.

EJECTOR HEADER CAP (Locks FFSD cable to EHF header)



ECF — **NO. PINS PER ROW**

05, 08, 10,
13, 17, 20, 25

***Important Note:**
EHF will not mate to FFSD with strain relief (-SR option), see ESHF series.

Note: Some lengths, styles and options are non-standard, non-returnable.

TYPE STRIP — 1	NO. PINS PER ROW — 01	PLATING OPTION — D	TAIL STYLE —	OTHER OPTION —						
SHF = Mates with FFSD without Strain Relief	04, 05, 06, 08, 10, 11, 12, 13, 15, 17, 20, 25 (Standard sizes)	-L = 10µ" (0,25 µm) Gold on post, Matte Tin on tail	-TH = Through-hole	-LC = Locking Clip (Not available with -RA) (Manual placement required)						
ESHF = Mates with FFSD with Strain Relief		<table border="1"> <tr> <th>TYPE STRIP</th> <th>A</th> </tr> <tr> <td>SHF</td> <td>No. of pins x (1,27) .050 + (6,35) .250</td> </tr> <tr> <td>ESHF</td> <td>No. of pins x (1,27) .050 + (10,16) .400</td> </tr> </table>	TYPE STRIP	A	SHF	No. of pins x (1,27) .050 + (6,35) .250	ESHF	No. of pins x (1,27) .050 + (10,16) .400	-RA = Right Angle	-TR = Tape & Reel Packaging
TYPE STRIP	A									
SHF	No. of pins x (1,27) .050 + (6,35) .250									
ESHF	No. of pins x (1,27) .050 + (10,16) .400									
			-SM = Surface Mount	-K = (6,50 mm) .256" DIA Polyimide Film Pick & Place Pad (-SM only)						

EHF — 1	NO. PINS PER ROW — 01	PLATING OPTION — D	TAIL OPTION —	OTHER OPTION —
EHF	04, 05, 08, 10, 13, 17, 20, 25 (Standard sizes)	-F = Gold flash on post, Matte Tin on tail	Leave blank for Through-Hole version	-“XX” = Polarized Position (-RA not available)
		-L = 10µ" (0,25 µm) Gold on post, Matte Tin on tail	-SM = Surface Mount	-LC = Locking Clip (-SM only) (Manual placement required)
			-RA = Right Angle	-K = (7,50 mm) .295" DIA Polyimide Film Pick & Place Pad
				-P = Pick & Place Pad (-SM only)
				-TR = Tape & Reel Packaging (-LC not available)