

EB1558A

5.08mm SPACING, PLUGGABLE MINI BLOCK

TECHNICAL DATA

MECHANICAL

Torque:

3.5 lbs-in. Max.

Operating Temperature:

-33°C to +120°C

-27°F to +248°F

MATERIAL

Contact Block:

Brass Machined, Tin Plated

Contact Clip:

PhBz, Tin Plated

Terminal Screw:

M3, Steel, Zinc Plated

Insulator Body:

Polyamide, UL 94V-0, Green

ELECTRICAL

Voltage Rating:

300VAC

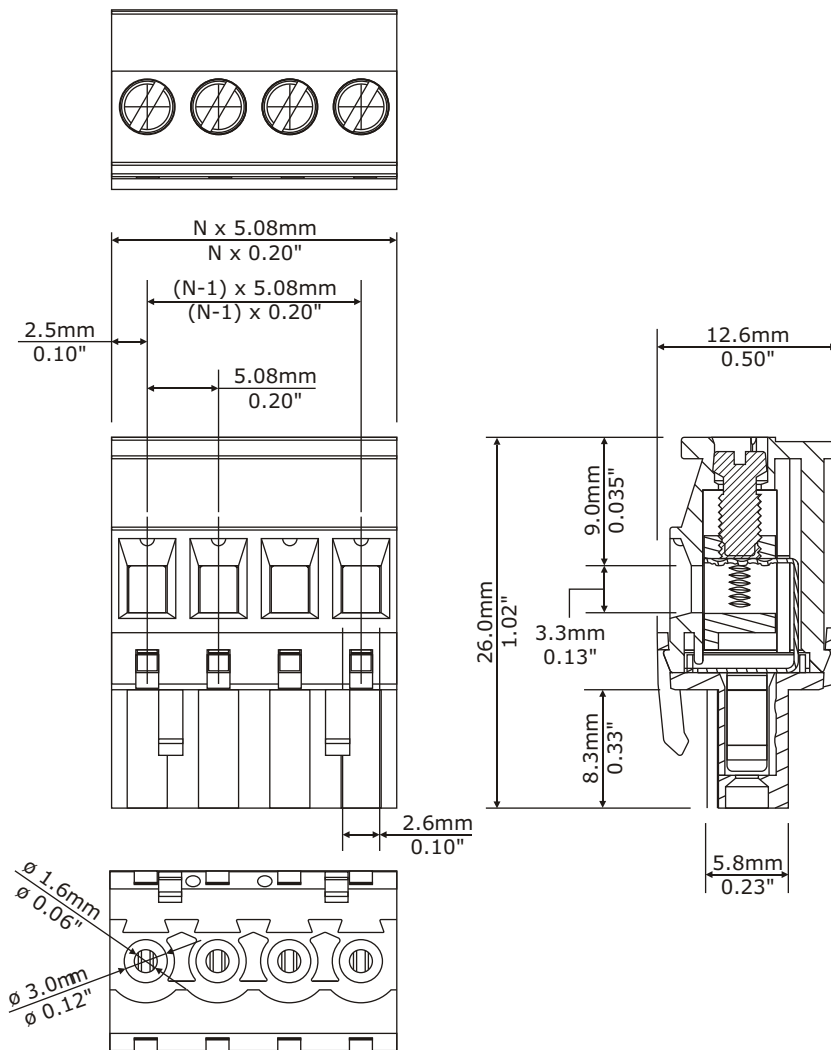
Current Rating:

10 Amps

Wire Range:

12-24AWG

DIMENSIONAL REFERENCE



Safety Approval:



PART NUMBERING

EB1558A-XX

NUMBER OF
POSITIONS
24 Maximum

If you require marking or printing on your parts, contact EBY - we can provide blocks to your exact specifications.

N = Number of contacts

EBY Electro, Inc.

210 Express Street
Plainview, NY 11803-2423 USA

© Copyright 2003 EBY Electro, Inc.



Electro-Mechanical Components Since 1945

www.ebyelectro.com

Email: info@ebyelectro.com

Tel: 516.576.7777 · Fax: 516.576.1414