

EA700

CAM OPERATED SWITCHES



3 N.O. - 3 N.C.

Specifications

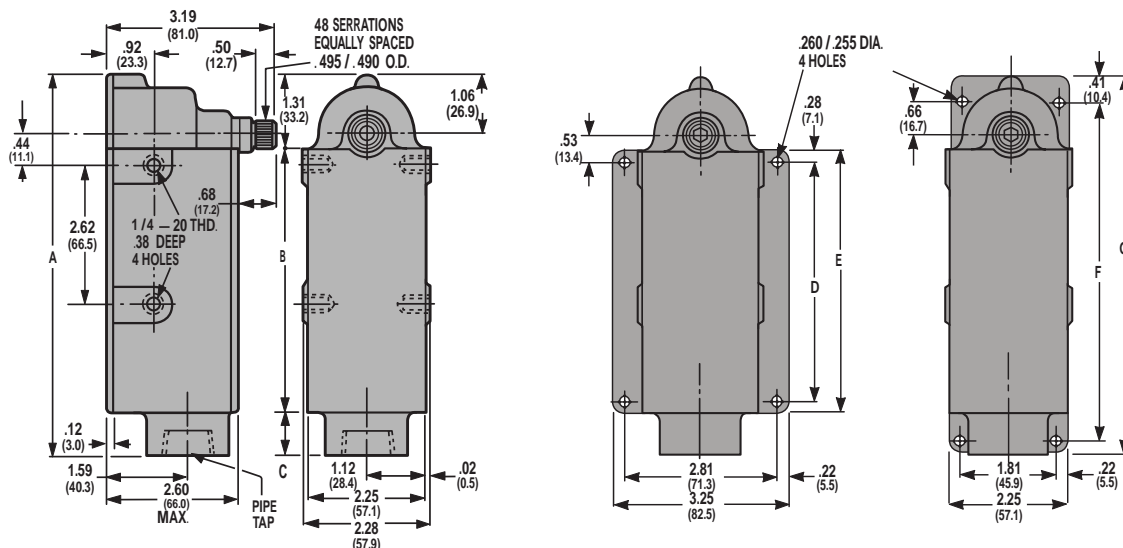
1. Enclosure is water, oil and dust tight.
2. Enclosure meets NEMA Type 1, 4 and 13 requirements.
3. Contacts made of silver alloy. Contact shifting mechanism is locked in position by the latches until switch lever is actuated.
4. Standard Temperature Range: -20°C to +90°C
5. Operating lever is adjustable to any required position.
6. Operating Lever Angles (travel either clockwise or counterclockwise) maximum degrees of trip travel, reset travel, as well as total lever travel, are determined by the cam selected.
7. Operating Torques - Trip Torque varies from 15 to 33 in. lbs. depending on switch size and cam selected.
8. Current Ratings:

Voltage	For Neutral Position Only	
	AC	DC
125V-A.C.	20.0 Amps*	10.0 Amps*
250V-A.C.	15.0 Amps*	7.5 Amps*
480V-A.C.	10.0 Amps*	5.0 Amps*
600V-A.C.	5.0 Amps*	2.5 Amps*
125V-D.C.	5.0 Amps*	2.5 Amps*
250V-D.C.	1.5 Amps*	.75 Amps*

*75-100% Power Factor

Dimensions and Mounting

Series EA700 Snap-Lock Limit Switches are specifically designed for flexibility in mounting arrangements. Basic design permits mounting for either side or back. Shown here are the (1) STANDARD for side mounting; (2) WIDE for back mounting; (3) LONG for back mounting.



Standard Mounting

Wide Mounting

Long Mounting

All dimensions given in US & Metric: Inches (mm)

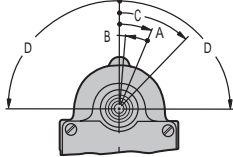
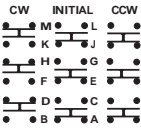
CONTACT SEQUENCE	STANDARD SWITCH							
	PIPE TAP SIZE	MOUNTING STYLE						
		A	B	C	D	E	F	G
3 N.O. - 3 N.C.	1-11 1/2 NPT	9.62	7.5	0.81	6.94	7.5	8.97	9.62

Standard Switches

ORDERING INFORMATION

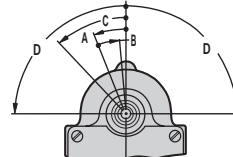
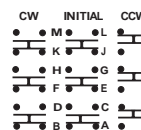
CW OPERATION ONLY (Combination B-1/B-2 Cam)

Contacts transfer when lever is operated CW. Lever can be operated CCW but contacts will not transfer.

CATALOG NUMBERS			OPERATIONAL DATA
MOUNTING (see opposite page)			
STANDARD	Wide	Long	 <p>A. Trip Travel18 B. Reset Travel14 C. Recommendation Travel.....30 D. Total Travel Available90 Torque (inch Lbs.) 3 N.O. - 3 N.C. ...33</p>
EA700-30000	EA700-60000	EA700-90000	
CIRCUITS			
CONTACTS			
3 N.O. 3 N.C.			

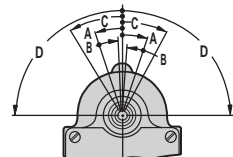
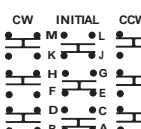
CCW OPERATION ONLY (Combination B-1/B-2 Cam)

Contacts transfer when lever is operated CCW. Lever can be operated CW but contacts will not transfer.

CATALOG NUMBERS			OPERATIONAL DATA
MOUNTING (see opposite page)			
STANDARD	Wide	Long	 <p>A. Trip Travel18 B. Reset Travel14 C. Recommendation Travel.....30 D. Total Travel Available90 Torque (inch Lbs.) 3 N.O. - 3 N.C. ...33</p>
EA700-30001	EA700-60001	EA700-90001	
CIRCUITS			
CONTACTS			
3 N.O. 3 N.C.			

CW & CCW OPERATION ONLY (Combination B-1/B-2 Cam)

Contacts transfer when lever is operated CW or CCW.

CATALOG NUMBERS			OPERATIONAL DATA
MOUNTING (see opposite page)			
STANDARD	Wide	Long	 <p>A. Trip Travel18 B. Reset Travel14 C. Recommendation Travel.....30 D. Total Travel Available90 Torque (inch Lbs.) 3 N.O. - 3 N.C. ...33</p>
EA700-30100	EA700-60100	EA700-90100	
CIRCUITS			
CONTACTS			
3 N.O. 3 N.C.			

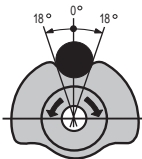
Typical Cams

B1 Single Action



Normally open to make (normally closed to break) IN ONE DIRECTION ONLY. Lever and cam are spring returned to starting position. Used on Single Action Switches only.

B2 Double Action



Normally open to make (normally closed to break) IN EITHER DIRECTION. Lever and cam are spring returned to starting position.

Combination B1/B2 CAM

The following three operating sequences are built into the combination cam used in the standard EA700 switches: B1 Single Action CW, B1 Single Action CCW and B2 Double Action CW & CCW.

1. The contacts function when the lever is operated clockwise. The lever can be operated counterclockwise but the contacts will not operate.
2. The contacts function when the lever is operated counterclockwise. The lever can be operated clockwise but the contacts will not operate.
3. The contacts function when the lever is operated clockwise or counterclockwise.