



Accessories – Backshells – D*H Series

Features

Backshells have two-piece construction and are frequently used where appearance is a major factor.

- RFI/EMI shielding capability is also an option:
 - Plastic Backshells: No shielding.
 - Metallized Plastic: Economical method of shielding.
 - Diecast Backshells: Maximum shielding.
- Standard two-piece construction available in plastic, metallized plastic, or diecast zinc versions with 180° straight cable entry.
- Fits standard metal shell D-subminiature plugs and sockets as well as HTD Series 1.5 D-sub.
- Included in all backshells:
 - Hardware: 4-40 screws, hex nuts, 4-40 screw mounting bracket.
 - Grommets: To accommodate most cable sizes. Grommets also function as strain reliefs.
- Backshells are individually bagged.
- Note that slide locks may not be used with these backshells.
- Optional thumbscrew for backshell must be ordered separately if required.



Materials

4-40 screws, hex nuts, mounting bracket: Steel with zinc plating and clear chromate coating.

Standard Backshells

- Plastic Backshells: ABS (black), hardware – steel with zinc plating, grommets – polyphenylene, (black).
- Metallized Plastic Backshells: ABS with nickel over copper plating, hardware – steel with zinc plating, grommets – PVC (black).
- Diecast Backshells: Diecast zinc, grommets – PVC (black).



[back to top](#)

Part Numbers

Ordering Information

D*H Two-Piece Backshells (see below for RoHS parts)

Shell Size	Fits		Plastic	Cable Dia. (in)	Metallized Plastic	Cable Dia. (in)
	Density	Cable Entry Style				
E	9	Straight (180°)	DPH-E-001	.210-.320	DCH-E-001	.210-.350
A	15	Straight (180°)	DPH-A-001	.210-.320	DCH-A-001	.210-.350
B	25	Straight (180°)	DPH-B-001	.230-.450	DCH-B-001	.230-.450
C	37	Straight (180°)	DPH-C-001	.350-.650	DCH-C-001	.350-.640

D 50 Straight (180°) N/A .350-.650 [DCH-D-001](#) .350-.640

Ordering Information

D*H Two-Piece Backshells (see below for RoHS parts)

Fits
Standard

Shell Size	Density	Cable Entry Style	Diecast Metal	Cable Dia. (in)
E	9	Straight (180°)	DMH-E-001	.210-.320
A	15	Straight (180°)	DMH-A-001	.210-.320
B	25	Straight (180°)	DMH-B-001	.230-.450
C	37	Straight (180°)	DMH-C-001	.350-.650
D	50	Straight (180°)	DMH-D-001	.350-.640

Ordering Information for RoHS D*H Two-Piece Backshells

Shell Size	Fits. Std. Dens	Cable Entry Style	Cable Dia. (in)		Cable dia. (in)	
			Plastic	Metallized Plastic	Diecast Metal	Cable Dia. (in)
E	9	Straight(180°)	DPH-E-003 .210-.320	DCH-E-003 .210-.320	DMH-E-003 .210-.350	
A	15	Straight(180°)	DPH-A-003 .210-.320	DCH-A-003 .210-.350	DMH-A-003 .210-.320	
B	25	Straight(180°)	DPH-B-003 .230-.450	DCH-B-003 .230-.450	DMH-B-003 .230-.450	
C	37	Straight(180°)	N/A	DCH-C-003 .350-640	DMH-C-003 .350-.650	
PDF			Plastic Drw.	Met. Plast. Drw.	Diecast Drw.	

[back to top](#)

Dimensions

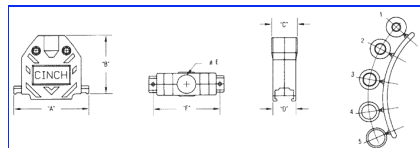
Straight (180deg.) Plastic & Metalized Plastic Dimensions

Shell Size	A	B	C	D	E	F
in	in	mm	in	mm	in	mm
E	1.22531	1.12154	739.290	64016.260	64516.380	40010.160
A	1.54039	1.12151	638.510	64016.260	64516.380	40010.161
B	2.09053	0.91655	42.040	71018.030	64516.380	52213.261
C	2.73069	0.34183	046.480	90623.010	64516.380	72518.422
D	2.64567	0.18185	541.120	94023.880	75019.050	72518.422

EMI/RFI Shielded Diecast Backshells Dimensions

Shell Size	A	B	C	D	E	F
in	in	mm	in	mm	in	mm
E	1.22531	1.12146	537.210	62015.750	62015.750	40010.160
A	1.54039	1.12160	40.640	62015.750	62015.750	40010.161
B	2.09053	0.91570	39.880	69017.530	62015.750	52513.341
C	2.73069	0.34181	045.970	86221.890	62015.750	72518.422
D	2.62466	0.65180	045.720	86221.890	73018.540	72518.422

Click image for larger view.



Click image for larger view.

