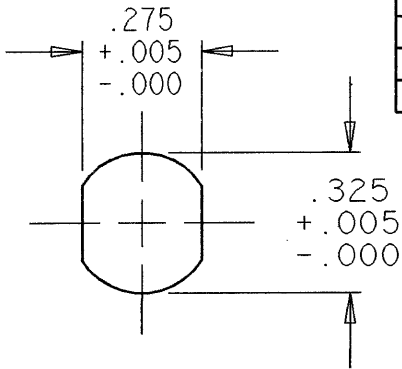
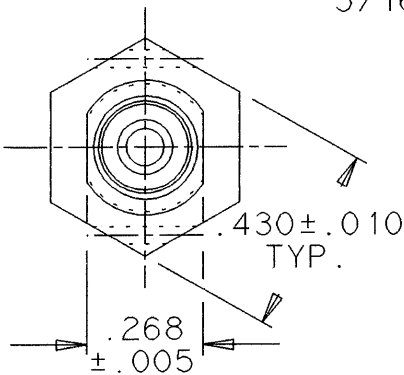


| REVISIONS |  |          |          |
|-----------|--|----------|----------|
| LTR       | DESCRIPTION                                  | DATE     | APPROVED |
| B         | COMBINED AND REDRAWN ON CAD PER ECN# T-16567 | 91 AUG 8 | Z. TEMAN |
| C         | REVISED PER ECN# T-16795                     | 91 OCT 9 | 35       |

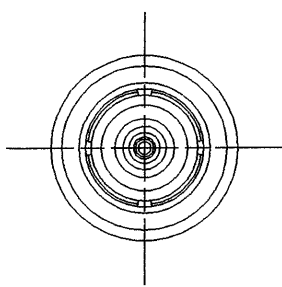


**JACK MOUNTING HOLE**  
(PREFERED)

**JACK ASSEMBLY: D-621-0212**

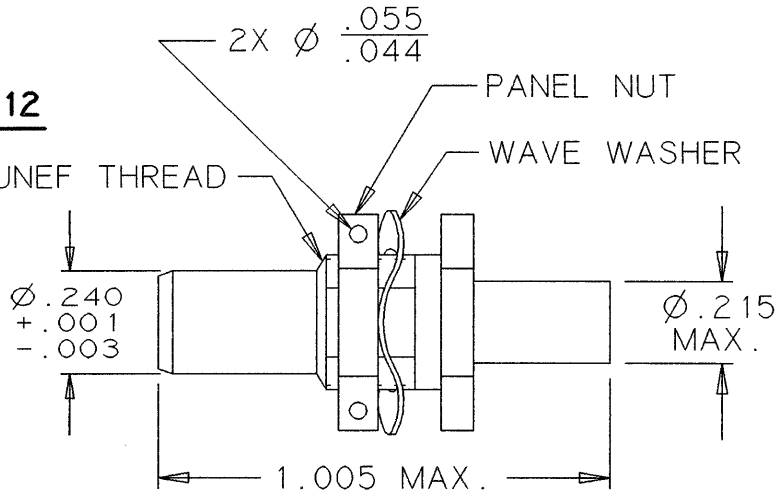


**PLUG ASSEMBLY: D-621-0211**



INTERFACIAL SEAL

Ø .42  
NOM.



2X Ø .055  
/ .044

PANEL NUT

WAVE WASHER

5/16-32 UNEF THREAD

Ø .240  
+.001  
-.003

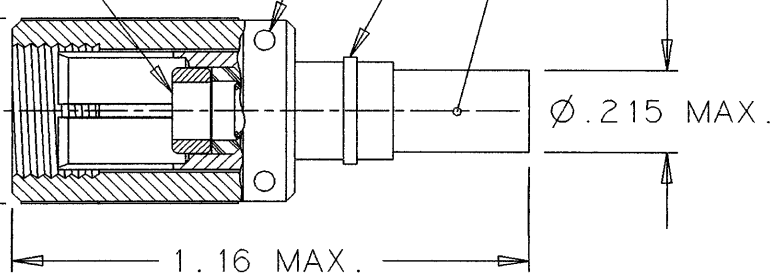
Ø .215  
MAX.

1.005 MAX.

2X Ø .047 ± .005  
SAFETY WIRE HOLE

RETAINING RING

HOUSING BODY



1.16 MAX.

Ø .215 MAX.

If this document is printed it becomes uncontrolled.  
Check with the web for latest revision.

**SPECIFICATION CONTROL DRAWING**

© Raychem Corporation 1991

UNLESS OTHERWISE SPECIFIED  
DIMENSIONS ARE IN INCHES.  
METRIC DIMENSIONS ARE  
IN BRACKETS.

DECIMALS

.XXX ± — [ — mm]  
.XX ± — [ — mm]

ANGLES

.X ± —

WEIGHT

— lbs [ — g]

DRAWN terry 86 MAR 31

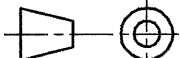
REDRAWN J.B.K. 91 AUG 5

APPROVED

APPROVED Z. TEMAN 91 AUG 8

CAD NAME 009110-1

THIRD ANGLE  
PROJECTION



**Raychem**

RAYCHEM CORPORATION  
300 CONSTITUTION DRIVE  
MENLO PARK, CALIFORNIA 94025

TITLE **CONNECTOR, TRIAXIAL,  
SUBMINIATURE,  
THREADED COUPLE  
(WITH INTERFACIAL SEAL SERIES)**

|      |                 |                 |     |
|------|-----------------|-----------------|-----|
| SIZE | CODE IDENT. NO. | DWG. NO.        | REV |
| A    | 06090           | D-621-0211/0212 | C   |

DO NOT SCALE THIS DRAWING

SHEET 1 OF 2

ORIGINAL DOCUMENT

SPECIFICATIONS

1.0 MATERIALS AND FINISHES

- 1.1 HOUSING BODY (PLUG): BRASS ALLOY PER ASTM B16,  
TIN PLATED PER MIL-T-10727 TYPE I,  
OVER NICKEL PER MIL-C-26074
- (JACK): BeCu ALLOY, ASTM B196, TB00 OR TD04,  
TIN PLATED PER MIL-T-10727 TYPE I,  
OVER NICKEL PER MIL-C-26074
- 1.1.1 INSULATION (MIP): POLYETHERSULFONE
- 1.2 COUPLING NUT (PLUG): BRASS ALLOY PER ASTM B16,  
NICKEL PLATED PER QQ-N-290
- 1.3 PANEL NUT (JACK): BRASS ALLOY PER ASTM B16,  
NICKEL PLATED PER QQ-N-290
- 1.4 WAVE WASHER (JACK): SPRING STEEL OR BeCu,  
NICKEL PLATED PER QQ-N-290
- 1.5 INTERFACIAL SEAL: SILICONE RUBBER

2.0 CONTACTS

THE CONNECTORS WILL ACCOMMODATE THE FOLLOWING RAYCHEM CONTACTS:

| CABLE TYPE | TRIAxIAL                            | TWINAXIAL                               | COAXIAL                             |
|------------|-------------------------------------|---|-------------------------------------|
| CONTACT(S) | D-602-44 (PIN)<br>D-602-45 (SOCKET) | D-602-0126 (PIN)<br>D-602-0127 (SOCKET) | D-610-09 (PIN)<br>D-610-10 (SOCKET) |

3.0 SEE ES61162 FOR CABLE ACCOMODATION AND TERMINATION INFORMATION.  
ANY OTHER APPLICATIONS SHOULD BE SUBMITTED TO RAYCHEM FOR EVALUATION.

4.0 PERFORMANCE REQUIREMENTS

4.1 REFER TO RAYCHEM SPECIFICATION D-6025 FOR PRODUCT PERFORMANCE AND  
QUAILIFICATION REQUIREMENTS.

5.0 GENERAL CHARACTERISTICS

- 5.1 OPERATING TEMPERATURE: -65°C TO 125°C
- 5.2 INSULATION RESISTANCE: GREATER THAN 5K MEG
- 5.3 DIELECTRIC STRENGTH: 900 VAC @ 60 Hz
- 5.4 CURRENT RATING: 3 AMPS MAX.
- 5.5 CONTACT RESISTANCE: INITIAL: 8 MILLIOHMS MAX.
- 5.6 MATING COUPLING TORQUE: 10 INCH/LBS MAX.
- 5.7 PANEL NUT TORQUE (JACK): 10-15 INCH/LBS (WHEN INSTALLING IN PANEL)
- 5.8 INSERTION FORCE: 3 LBS MAX.
- 5.9 WITHDRAWAL FORCE: 1 OUNCE MAX.
- 5.10 CONTACT RETENTION TERMINATED: 20 LBS MIN.
- 5.11 DURABILITY: 500 CYCLES

**If this document is printed it becomes uncontrolled.  
Check with the web for latest revision.**

|                           |        |        |          |      |                 |                 |     |
|---------------------------|--------|--------|----------|------|-----------------|-----------------|-----|
| CAD NAME: 009110-2        | DRAWN  | J.B.K. | 91 AUG 5 | SIZE | CODE IDENT. NO. | DWG. NO.        | REV |
|                           | ISSUED |        |          | A    | 06090           | D-621-0211/0212 | C   |
| DO NOT SCALE THIS DRAWING |        |        |          |      |                 | SHEET 2 OF 2    |     |