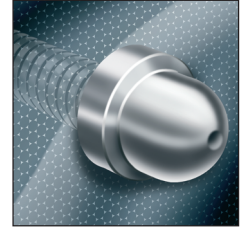


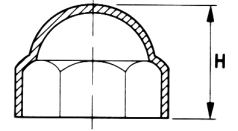
| PART NUMBER | | Nominal Thread Size | Across Flats Hexagon | H |
|-------------|----------|---------------------|----------------------|------|
| Black | White | | | |
| *1639575 | *1639581 | M4 | 6.9 | 8.7 |
| *1639576 | *1639582 | M5 | 7.9 | 10.7 |
| *1639577 | *1639583 | M6 | 9.8 | 13.0 |
| 1639578 | 1639585 | M8 | 13.0 | 15.0 |
| 1639579 | 1639586 | M10 | 16.7 | 19.5 |
| 1639580 | 1639587 | M12 | 18.7 | 21.5 |



Material: Low Density Polyethylene

- Protects and gives a neat finish to exposed metal hexagon nuts and screw heads
- Quick and simple to install

RoHS Directive 2002/95/EC compliant



This part has a circular external form and a hexagonal internal form and is suitable for Hexagon Head screws and nuts. Parts marked * will also fit the appropriate size Metric Cheese Head Screw (Chapter 6)

Material Properties

| Mechanical/Physical Properties | Units | Value |
|--------------------------------|-------------------|-------|
| Density | g/cm ³ | 0.924 |
| Water Absorption | % | 0.01 |
| Tensile Strength, Yield | MPa | 11.0 |
| Elongation at Yield | % | 14.5 |
| Tensile Modulus | GPa | 0.260 |

| Electrical Properties | Units | Value |
|-----------------------------|--------|------------|
| Electrical Resistivity | ohm-cm | ≥ 1.00e+15 |
| Surface Resistivity | ohm | 1.00e+14 |
| Dielectric Constant (1 MHz) | - | 2.30 |

| Thermal Properties | Units | Value |
|--|-------|-------|
| Melting Point | °C | 111 |
| Short Term Minimum Working Temperature | °C | -40 |
| Short Term Maximum Working Temperature | °C | 55 |
| Flammability | UL94 | HB |
| Oxygen Index | % | 17.0 |

Above information is for guidance only and should not be used to establish specifications or as the basis of a design

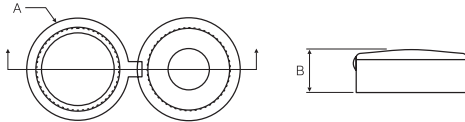
| PART NUMBER | | | | Screw Size | A | B |
|-------------|---------|---------|---------|------------------|------|-----|
| Black | White | Red | Green | | | |
| 1639588 | 1639591 | 1639594 | 1639598 | M3/M4 & N°4 | 11.5 | 5.0 |
| 1639589 | 1639592 | 1639595 | 1639599 | M4/M5 & N°8/N°10 | 13.7 | 5.5 |
| 1639590 | 1639593 | 1639597 | 1639600 | M6 & 1/4" | 17.4 | 6.5 |

Material: Polypropylene

- All-in-one base and cover
- Cap snaps into base to give a neat and decorative finish

Available in matt finish only

RoHS Directive 2002/95/EC compliant



Material Properties

| Mechanical/Physical Properties | Units | Value |
|--------------------------------|-------------------|-------|
| Density | g/cm ³ | 0.9 |
| Hardness | Shore D | 71 |
| Tensile Strength, Yield | MPa | 35.9 |
| Elongation at Yield | % | 490 |
| Flexural Modulus | GPa | 1.39 |

| Thermal Properties | Units | Value |
|-----------------------------------|-------|-------|
| Deflection Temperature at 0.45MPa | °C | 104 |
| Vicat Softening Temperature | °C | 150 |

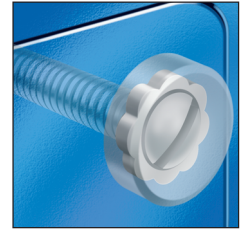
Above information is for guidance only and should not be used to establish specifications or as the basis of a design

Pop-On Screw Covers

| PART NUMBER | | | | Screw Size | A | B |
|-------------|---------|---------|---------|------------|------|-----|
| Black | White | Red | Green | | | |
| 1639601 | 1639605 | 1639608 | 1639611 | M3/M4 | 12.7 | 5.1 |
| 1639603 | 1639606 | 1639609 | 1639612 | M4/M5 | 16.0 | 6.5 |
| 1639604 | 1639607 | 1639610 | 1639613 | M6 | 17.8 | 6.6 |

Material: Polypropylene

- Can also be used with No 4, 6, 8, 10 and ¼ - 20 screws



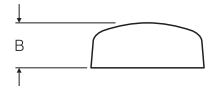
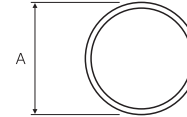
RoHS Directive 2002/95/EC compliant



Allow approximately 0.50 extra for assembled height



These parts must be used with Pop-On Screw Cover Bases - see below



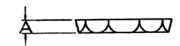
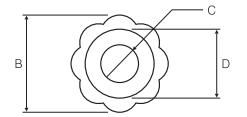
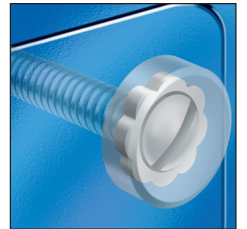
Pop-On Screw Cover Bases

| PART NUMBER | To Fit Pop-on Screw Covers | Screw Size | A | B | C | D |
|-------------|----------------------------|----------------------|-----|------|-----|------|
| 1639615 | 1639601 to 1639611 | M3 & No4 Pan | 2.9 | 10.5 | 3.0 | 7.0 |
| 1639616 | 1639601 to 1639611 | M3.5 & No6 Pan | 2.9 | 10.5 | 3.8 | 7.0 |
| 1639617 | 1639601 to 1639611 | M3/M4 & No4/No8 CSK | 2.9 | 10.5 | 3.8 | - |
| 1639618 | 1639603 to 1639612 | M4 & No8 PAN | 3.2 | 12.7 | 4.5 | 9.3 |
| 1639619 | 1639603 to 1639612 | M5 & No10 PAN | 3.2 | 12.8 | 5.0 | 9.3 |
| 1639620 | 1639603 to 1639612 | M4/M5 & No8/No10 CSK | 3.2 | 12.8 | 5.0 | - |
| 1639621 | 1639604 to 1639613 | M6 & 1/4" PAN | 3.2 | 15.7 | 6.2 | 12.4 |
| 1639622 | 1639604 to 1639613 | M6 & 1/4" CSK | 3.3 | 15.7 | 6.2 | - |

Material: Polypropylene
Colour: Natural

- Pop-on screw covers and bases may be used with:- flat head nails, countersunk screws, self tapping screws, rivets, drive screws, machine screws, washer faced screws and other types of fasteners
- Cover locks firmly onto base to provide a neat and decorative finish

RoHS Directive 2002/95/EC compliant



Material Properties

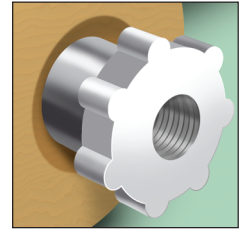
| Mechanical/Physical Properties | Units | Value |
|--------------------------------|-------------------|-------|
| Density | g/cm ³ | 0.9 |
| Hardness | Shore D | 71 |
| Tensile Strength, Yield | MPa | 35.9 |
| Elongation at Yield | % | 490 |
| Flexural Modulus | GPa | 1.39 |

| Thermal Properties | Units | Value |
|-----------------------------------|-------|-------|
| Deflection Temperature at 0.45MPa | °C | 104 |
| Vicat Softening Temperature | °C | 150 |

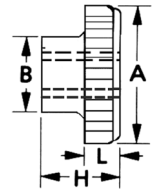
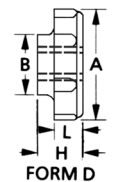
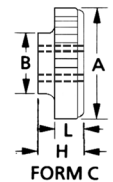
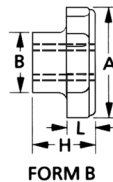
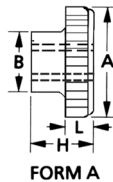
Above information is for guidance only and should not be used to establish specifications or as the basis of a design

| PART NUMBER | Thread Size | A | B | H | L | Form |
|-------------|-------------|------|-----|-----|-----|------|
| 1639623 | M3 x .5 | 12.0 | 7.0 | 7.0 | 3.5 | A |
| 1639624 | M4 x .7 | 12.0 | 7.0 | 7.0 | 3.5 | A |
| 1639625 | M5 x .8 | 16.0 | 9.5 | 8.0 | 4.5 | A |
| 1639627 | M6 x 1.0 | 16.0 | 9.5 | 8.0 | 4.5 | A |
| 1639628 | M4 x .7 | 16.0 | 9.5 | 8.0 | 4.5 | B |
| 1639629 | M5 x .8 | 16.0 | 9.5 | 8.0 | 4.5 | B |
| 1639630 | M6 x 1.0 | 16.0 | 9.5 | 8.0 | 4.5 | B |

| PART NUMBER | Thread Size | A | B | H | L | Form |
|-------------|-------------|------|------|-----|-----|------|
| 1639631 | M4 x .7 | 16.0 | 10.0 | 6.0 | 4.5 | C |
| 1639632 | M5 x .8 | 16.0 | 10.0 | 6.0 | 4.5 | C |
| 1639633 | M6 x 1.0 | 16.0 | 10.0 | 6.0 | 4.5 | C |
| 1639634 | M4 x .7 | 16.0 | 10.0 | 6.0 | 4.5 | D |
| 1639635 | M5 x .8 | 16.0 | 10.0 | 6.0 | 4.5 | D |
| 1639636 | M6 x 1.0 | 16.0 | 10.0 | 6.0 | 4.5 | D |



Material: Nylon 66
 Colour: White
 RoHS Directive 2002/95/EC compliant



| Thread Size | Suggested Max. Tightening Torque (Nm) for Nylon 6,6 screws as per DIN3481X |
|-------------|--|
| M3 | 0.10 |
| M4 | 0.25 |
| M5 | 0.50 |
| M6 | 0.80 |

N/A = Test data not available
 1Nm = 8.851lbf-in

Above information is for guidance only and should not be used to establish specifications or as the basis of a design

Material Properties

Values measured at 23°C @ 50% RH

| Mechanical/Physical Properties | Units | Value |
|--------------------------------|-------------------|-------|
| Density | g/cm ³ | 1.14 |
| Water Absorption | % | 1.3 |
| Tensile Strength at Break | MPa | 55 |
| Elongation at Yield | % | 30 |
| Tensile Modulus | GPa | 1.50 |

| Electrical Properties | Units | Value |
|------------------------|--------|-----------|
| Electrical Resistivity | ohm-cm | ≥1.00e+14 |
| Surface Resistivity | ohm | 0.10e+14 |
| Dielectric Strength | kV/mm | 26 |

| Thermal Properties | Units | Value |
|--|-------|-------|
| Melting Point | °C | 263 |
| Short Term Minimum Working Temperature | °C | -40 |
| Short Term Maximum Working Temperature | °C | 110 |
| Flammability | UL94 | V2 |
| Oxygen Index | % | 26.5 |

Above information is for guidance only and should not be used to establish specifications or as the basis of a design