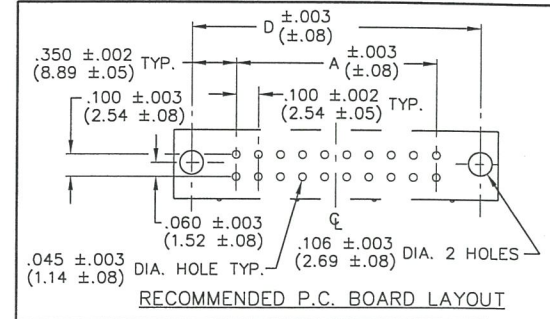
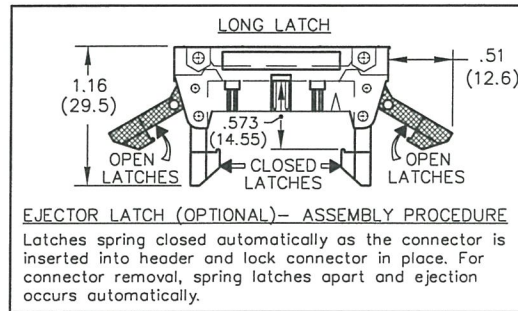
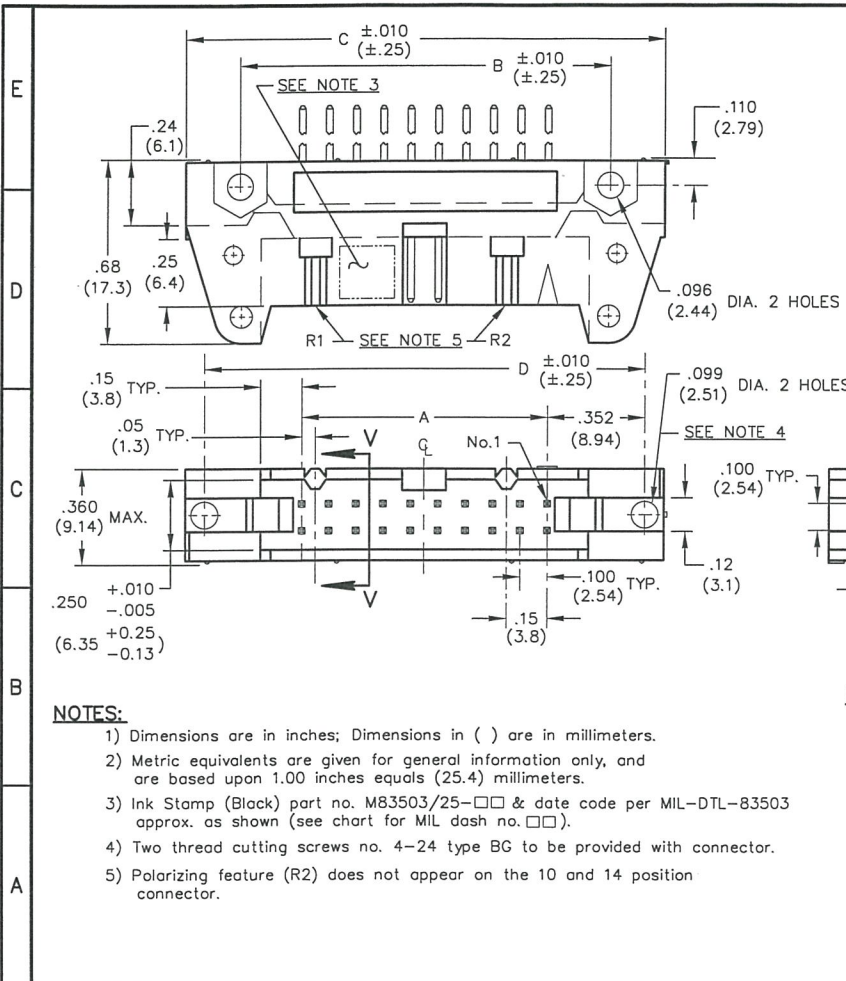


DIMENSIONS IN INCHES (MILLIMETERS)
DO NOT SCALE DRAWING

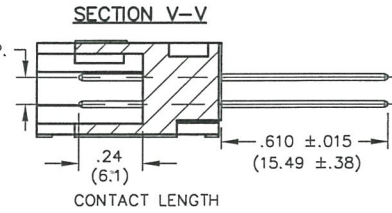
Dwg. No.

CWN-572-XX-0022



OPERATING STANDARDS:

- TEMPERATURE RATING- 125°C
- CONTACT RATING- 1 AMPERE.
- DIELECTRIC STRENGTH- OVER 500V.D.C. AT SEA LEVEL.
- INSULATION RESISTANCE- Greater than 5 x 10⁹ ohms.



MATERIALS:

- PLASTIC PARTS- UL94V-0 Thermoplastic (blue, std.) flame retardant.
- CONTACTS- Phosphor Bronze, standard
- CONTACT PLATING- Selective gold plating, Standard; .000050 (min.) gold over .000050 nickel in mating area, and .000100 SnPb over .000050 nickel in remaining area.

NOTES:

- 1) Dimensions are in inches; Dimensions in () are in millimeters.
- 2) Metric equivalents are given for general information only, and are based upon 1.00 inches equals (25.4) millimeters.
- 3) Ink Stamp (Black) part no. M83503/25-□□ & date code per MIL-DTL-83503 approx. as shown (see chart for MIL dash no. □□).
- 4) Two thread cutting screws no. 4-24 type BG to be provided with connector.
- 5) Polarizing feature (R2) does not appear on the 10 and 14 position connector.

CUSTOMER DRAWING ONLY

XX NO. CONT's	CONNECTOR DIMENSIONS				MIL DASH NO. □□
	A	B	C	D	
10	.400 (10.16)	.860 (21.84)	1.260 (32.00)	1.100 (27.94)	-03
14	.600 (15.24)	1.060 (26.92)	1.460 (37.08)	1.300 (33.02)	-06
16	.700 (17.78)	1.160 (29.46)	1.560 (39.62)	1.400 (35.56)	-09
20	.900 (22.86)	1.360 (34.54)	1.760 (44.70)	1.600 (40.64)	-12
26	1.200 (30.48)	1.660 (42.16)	2.060 (52.32)	1.900 (48.26)	-15
34	1.600 (40.64)	2.060 (52.32)	2.460 (62.48)	2.300 (58.42)	-18
40	1.900 (48.26)	2.360 (59.44)	2.760 (70.10)	2.600 (66.04)	-21
50	2.400 (60.96)	2.860 (72.64)	3.260 (82.80)	3.100 (78.74)	-24
60	2.900 (73.66)	3.360 (85.34)	3.760 (95.50)	3.600 (91.44)	-27

1 2 3 4 5 6 7 8 9 10

FORM-B4

REVISIONS

0	RELEASED DCW 4-16-2001 AW 4-25-01
---	---

ATTENTION
THIS DRAWING AND ITS ATTACHMENTS, IF ANY, ARE PROPRIETARY TO CW INDUSTRIES AND DESCRIBE DESIGNS THAT ARE CONFIDENTIAL AND MUST NOT BE DISCLOSED UNLESS AUTHORIZED, IN WRITING, BY AN OFFICER OF CW INDUSTRIES.

CW INDUSTRIES
Southampton, Pa. 18966

TOLERANCES UNLESS OTHERWISE SPECIFIED

2 Place Decimal ±.010	METRIC
3 Place Decimal ±.005	1 Place Dec. ±.25mm
Angles ±1°	2 Place Dec. ±.13mm

Made for: CW IND.
Drawn by: DGW 4-16-2001
Checked by: G.Guld 42401
Approval: A.HOFFMAN 4-25-01

Title: P.C.B. HEADER
.100 x .100 CENTERS
.610 STRAIGHT
CONTACTS - SQUARE
W/POLAR. RIB(S) & LATCHES

Division: SWITCH

Dwg. No. CWN-572-XX-0022

MASTER