

NEW!



TOOLESS CONNECTORS

ITEM #	DESCRIPTION
CFC-9100 FOR RG-59	JUST PREP AND PUSH
CFC-9101 FOR RG-6	NO TOOLS REQUIRED
	HIGH PULL STRENGTH



ITEM # CFC-7113 DESCRIPTION 2PC, F MALE FOR RG-59 W/ 1/2" RING



ITEM # CFS-1003 DESCRIPTION F-FEMALE TO FEMALE LONG VERSION COUPLER



ITEM # CFC-7110 DESCRIPTION F MALE FOR RG-59 W/ 1/4" ATTACHED RING



ITEM # CFS-0184 DESCRIPTION F MALE TO MALE COUPLER



ITEM # CFC-7120 DESCRIPTION F MALE FOR RG-11 PVC W/SEPARATE RING



ITEM # CAD-1036 DESCRIPTION F FEMALE TO UHF MALE ADAPTER



ITEM # CFC-7119 DESCRIPTION F.MALE FOR RG-11 PVC -1PC CONSTRUCTION



ITEM # CAD-1037 DESCRIPTION F FEMALE TO N MALE ADAPTER

RF CONNECTOR LINE

50 OHM BNC 3PC. MALE CRIMP UNIVERSAL



Item # DESCRIPTION
 CBN-3117 DUAL FERRULE BNC 3PC MALE FOR RG-59 PVC & PLENUM

MINI-UHF 3PC. MALE CRIMP



Item # DESCRIPTION
 CMU-3110 MINI-UHF 3 PC. MALE CRIMP FOR RG-59 PVC
 CMU-3122 MINI-UHF 3 PC. MALE CRIMP FOR RG-8X

50 OHM BNC 3PC. MALE CRIMP



Item # DESCRIPTION
 CBN-3310 BNC 3PC MALE FOR RG-59 PVC W/20 GA. CNTR.
 CBN-3219 BNC 3PC MALE FOR BELDEN 8218 MINI COAX
 CBN-3122 BNC 3PC MALE CRIMP FOR RG-8X

TNC 3PC. MALE CRIMP



Item # DESCRIPTION
 CTN-2110 TNC 3PC. MALE CRIMP FOR RG-59
 CTN-2122 TNC 3PC. MALE CRIMP FOR RG-8X

75 OHM BNC 3PC. MALE CRIMP



Item # DESCRIPTION
 CBB-3221 75 OHM BNC 3 PC. MALE CRIMP FOR RG-179

TNC FEMALE CRIMP AND SOLDIER



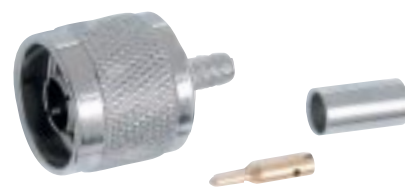
Item # DESCRIPTION FIG.
 CTN-3212 TNC 3 PC. FEMALE CRIMP FEMALE FOR RG-58 1
 CTN-3312 TNC FEMALE SOLDER CHASSIS MOUNT 3/8" MTG. 2

50 OHM BNC 2PC. MALE RIGHT ANGLE CRIMP



Item # DESCRIPTION
 CBN-2123 BNC 2PC. RIGHT ANGLE CRIMP FOR RG-59 PVC
 CBN-2124 BNC 2PC. RIGHT ANGLE CRIMP FOR RG-6 PVC

N 3PC. MALE CRIMP



Item # DESCRIPTION
 CNC-3192 N 3PC. MALE CRIMP RG8/11/213 W/ 10 AWG CENTER
 CNC-3024 N 3PC. FEMALE CRIMP FOR RG-58

50 OHM BNC 3PC. SOLDER



ITEM #	DESCRIPTION
CBN-6110	BNC 3PC. SOLDER/CLAMP FOR RG-59
CBN-6112	BNC 3PC. SOLDER/CLAMP FOR RG-58

TWINAXIAL CONNECTORS



FIG.	ITEM #	DESCRIPTION
1	CTW-1000	TWIN-AX MALE CLAMP CONNECTOR
2	CTW-1001	TWIN-AX FEMALE/FEMALE IN-LINE SPLICE
3	CTW-1002	TWIN-AX FEMALE CLAMP CONNECTOR



ITEM #	DESCRIPTION
CAD-1003	BNC MALE TO BNC MALE COUPLER



ITEM #	DESCRIPTION
CAD-1071	N MALE TO UHF FEMALE ADAPTER



ITEM #	DESCRIPTION
CAD-1057	BNC MALE TO RCA MALE ADAPTER



ITEM #	DESCRIPTION
CAD-1200	SMA FEMALE TO N MALE ADAPTER



ITEM #	DESCRIPTION
CAD-1056	BNC FEMALE TO N FEMALE ADAPTER



ITEM #	DESCRIPTION
CAD-1060	N MALE TO FEMALE RIGHT ANGLE ADAPTER



ITEM #

CAD-1201

DESCRIPTION

SMA MALE TO BNC FEMALE ADAPTER



ITEM #

CAD-1068

DESCRIPTION

TNC FEMALE TO MINI-UHF MALE ADAPTER



ITEM #

CAD-1082

DESCRIPTION

BNC FEMALE TO MINI UHF MALE ADAPTER



ITEM #

CAD-1081

DESCRIPTION

MINI UHF FEMALE TO TNC MALE ADAPTER



ITEM #

CAD-1067

DESCRIPTION

N FEMALE TO MINI-UHF MALE ADAPTER



ITEM #

CAD-1069

DESCRIPTION

TNC MALE TO FEMALE RIGHT ANGLE ADAPTER



ITEM #

CAD-1066

DESCRIPTION

N-FEMALE TO UHF MALE ADAPTER



ITEM #

CAD-1072

DESCRIPTION

UHF MALE TO RCA FEMALE ADAPTER