

Color-coded compression connectors

Type C – Compression connectors covers



- Hinged polyethylene cover
- Installs easily, quickly – less expensive than taping
- Positive snap-locks fasten securely
- Drain ports prevent accumulation of corrosion-causing moisture
- Ultra-violet stabilized

Type C – Compression connectors covers

Cat. no.	Capacity*	Dimensions (in.)		
		Height	Length	Width
C2BB	All $\frac{5}{8}$ in. and O.D. Die taps, 2 in. long or less	1.10	4.00	1.05
C5C	All "O" Die taps, $1\frac{3}{4}$ in. long or less	1.60	3.75	1.25
C7C	All "D" Die taps, $2\frac{1}{2}$ in. long or less	1.80	5.00	1.45
C9	All "N" and "D" Die taps, up to 2 in. long	2.75	4.25	2.00
C9L	All "N" and "D" Die taps, up to 5 in. long	2.75	7.25	2.00

* Before compression.

Color-coded compression connectors

Type CTL – Copper lugs, one-hole mount, short barrel



Copper compression connectors

- For use with copper conductors: AWG stranded, flexible cable, welding cable and portable cord
- Specially designed for industrial and building applications
- Made of high-conductivity seamless copper tubing
- Tin-plated for corrosion resistance
- Specially chamfered barrel for ease of installation
- Color-coded for matching die identification
- Can be used for medium voltage application up to 35 kV, provided proper insulation techniques are used

- CSA certified and UL listed for AWG conductors when installed with Blackburn, Burndy, ABB or Anderson tools, as specified by CSA
- Comply with Subpart 111.60-17 of Federal Register's Coast Guard Electrical Engineering Rules and Regulations

Short barrel connectors

- Short barrel connectors designed for regular-duty applications
- Ideal for confined areas

Type CTL – Copper lugs, one-hole mount, short barrel



Cat. no.	Conductor size (Cu)	Stud size (in.)	Dimensions (in.)						Color code
			A	B	C	L	W	T	
CTL8-10	8 str.	10	13/32	1/2	7/32	1 3/32	3/8	1/16	Red
CTL8-14	8 str.	1/4	13/32	19/32	1/4	1 3/16	7/16	1/16	
CTL8-516	8 str.	5/16	13/32	5/8	9/32	1 1/16	9/16	1/16	
CTL6-10	6 str.	10	7/16	17/32	7/32	1 7/32	7/16	1/16	Blue
CTL6-14	6 str.	1/4	7/16	17/32	7/32	1 7/32	7/16	1/16	
CTL6-516	6 str.	5/16	7/16	21/32	9/32	1 13/32	19/32	1/16	
CTL6-38	6 str.	3/8	7/16	21/32	9/32	1 13/32	19/32	1/16	Gray
CTL4-10	4 str.	10	1/2	19/32	1/4	1 3/8	17/32	3/32	
CTL4-14	4 str.	1/4	1/2	19/32	1/4	1 3/8	17/32	3/32	
CTL4-516	4 str.	5/16	1/2	21/32	5/16	1 13/32	19/32	1/16	
CTL4-38	4 str.	3/8	1/2	21/32	5/16	1 13/32	19/32	1/16	Brown
CTL2-14	2 + 3 str.	1/4	19/32	21/32	1/4	1 1/2	9/16	3/32	
CTL2-516	2 + 3 str.	5/16	19/32	7/8	3/8	1 23/32	9/16	3/32	
CTL2-38	2 + 3 str.	3/8	19/32	29/32	3/8	1 3/4	9/16	3/32	
CTL2-12	2 + 3 str.	1/2	19/32	1 1/16	1/2	1 29/32	3/4	1/16	Green
CTL114	1 str.	1/4	19/32	21/32	1/4	1 1/2	21/32	3/32	
CTL1516	1 str.	5/16	19/32	7/8	3/8	1 23/32	21/32	3/32	
CTL138	1 str.	3/8	19/32	29/32	3/32	1 3/4	21/32	3/32	
CTL112	1 str.	1/2	19/32	1 1/4	1/2	2 3/32	3/4	3/32	Pink
CTL10-516	1/0 str.	5/16	11/16	7/8	3/8	1 13/16	3/4	1/8	
CTL10-38	1/0 str.	3/8	11/16	29/32	3/8	1 7/8	3/4	1/8	
CTL10-12	1/0 str.	1/2	11/16	1 1/4	1/2	2 3/16	3/4	1/8	Black
CTL20-38	2/0 str.	3/8	13/16	29/32	3/8	2 1/32	13/16	1/8	
CTL20-12	2/0 str.	1/2	13/16	1 1/4	1/2	2 11/32	13/16	1/8	
CTL30-38	3/0 str.	3/8	13/16	29/32	3/8	2 1/32	29/32	1/8	Orange
CTL30-12	3/0 str.	1/2	13/16	1 1/4	1/2	2 11/32	29/32	1/8	

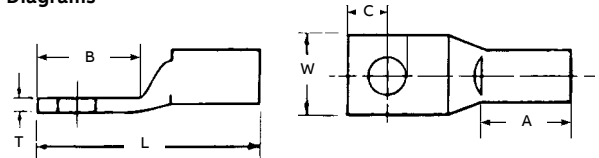
See the Color-Keyed tools, dies and kits catalogue for more tool and die information.

Blackburn and ABB are registered trademarks of ABB Installation Products, Ltd. All other trademarks are the property of their respective owners.



Cat. no.	Conductor size (Cu)	Stud size (in.)	Dimensions (in.)						Color code
			A	B	C	L	W	T	
CTL40-38	4/0 str. or 3/0 weld	3/8	15/16	29/32	3/8	2 5/32	1 3/32	1/8	Purple
CTL40-12	4/0 str. or 3/0 weld	1/2	15/16	1 1/4	1/2	2 1/2	1 1/32	1/8	
CTL250-12	250 kcmil or 4/0 weld	1/2	1 1/32	1 1/4	1/2	2 19/32	1 1/8	1/8	Yellow
CTL300-12	300 kcmil	1/2	1 1/32	1 1/4	1/2	2 25/32	1 3/16	5/32	White
CTL350-12	350 kcmil	1/2	1 1/32	1 1/4	1/2	2 25/32	1 11/32	5/32	Red
CTL400-12	400 kcmil	1/2	1 1/32	1 1/4	1/2	3 3/16	1 13/32	5/32	Blue
CTL400-58	400 kcmil	5/8	1 1/32	1 9/16	5/8	3 1/2	1 13/32	5/32	Brown
CTL500-12	500 kcmil	1/2	1 1/32	1 1/4	1/2	3 1/4	1 19/32	7/32	
CTL500-58	500 kcmil	5/8	1 1/32	1 9/16	5/8	3 9/16	1 19/32	7/32	Green
CTL600-58	600 kcmil	5/8	1 9/16	1 9/16	5/8	3 23/32	1 3/4	7/32	
CTL750-58	750 kcmil	5/8	1 1/2	1 9/16	5/8	3 25/32	1 29/32	1/4	Black
CTL1000-58	1,000 kcmil	5/8	1 3/4	1 9/16	5/8	4 1/32	2 1/4	9/32	-

Diagrams



Color-coded compression connectors

Type CTL – Copper lugs, two-hole mount, short barrel



Copper compression connectors

- For use with copper conductors: AWG stranded, flexible cable, welding cable and portable cord
- Specially designed for industrial and building applications
- Made of high-conductivity seamless copper tubing
- Tin-plated for corrosion resistance
- Specially chamfered barrel for ease of installation
- Color-coded for matching die identification
- Can be used for medium voltage application up to 35 kV, provided proper insulation techniques are used

- CSA certified and UL listed for AWG conductors when installed with Blackburn, Burndy, ABB or Anderson tools, as specified by CSA
- Comply with Subpart 111.60-17 of Federal Register's Coast Guard Electrical Engineering Rules and Regulations

Short barrel connectors

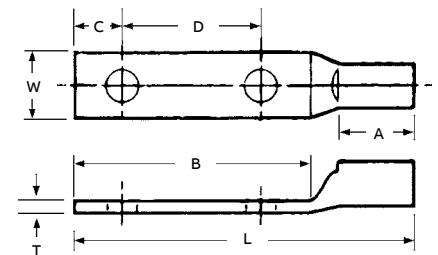
- Short barrel connectors designed for regular-duty applications
- Ideal for confined areas

Type CTL – Copper lugs, two-hole mount, short barrel



Cat. no.	Conductor size (Cu)	Stud size (in.)	Dimensions (in.)							Color code
			A	B	C	D	L	W	T	
CTL6-214	6 str.	¼	½	1¼	¼	⅝	1 ³¹ / ₃₂	¹³ / ₃₂	¹ / ₁₆	Blue
CTL4-214	4 str.	¼	½	1¼	¼	⅝	2 ¹ / ₃₂	½	³ / ₃₂	Gray
CTL2-2516	2 + 3 str.	⁵ / ₁₆	¹⁹ / ₃₂	1 ⁵ / ₈	³ / ₈	³ / ₄	2 ¹⁵ / ₃₂	⁹ / ₁₆	³ / ₃₂	Brown
CTL1-2516	1 str.	⁵ / ₁₆	¹⁹ / ₃₂	1¾	³ / ₈	⁷ / ₈	2 ¹⁹ / ₃₂	2 ¹ / ₃₂	³ / ₃₂	Green
CTL10-2516	1/0 str.	⁵ / ₁₆	¹¹ / ₁₆	1¾	³ / ₈	⁷ / ₈	2 ¹¹ / ₁₆	³ / ₄	¹ / ₈	Pink
CTL202	2/0 str.	½	¹³ / ₁₆	2 ¹³ / ₁₆	½	1¾	3 ¹³ / ₁₆	¹³ / ₁₆	¹ / ₈	Black
CTL302	3/0 str.	½	²⁵ / ₃₂	2 ¹³ / ₁₆	½	1¾	3 ¹⁵ / ₁₆	¹⁵ / ₁₆	¹ / ₈	Orange
CTL402	4/0 str.	½	¹⁵ / ₁₆	3	½	1¾	4¼	1 ³ / ₃₂	¹ / ₈	Purple
CTL2502	250 kcmil	½	1 ¹ / ₃₂	3	½	1¾	4 ¹¹ / ₃₂	1 ¹ / ₈	⁵ / ₃₂	Yellow
CTL3002	300 kcmil	½	1 ¹ / ₃₂	3	½	1¾	4 ¹⁷ / ₃₂	1 ³ / ₁₆	⁵ / ₃₂	White
CTL3502	350 kcmil	½	1 ¹ / ₃₂	3	½	1¾	4 ¹⁷ / ₃₂	1 ¹¹ / ₃₂	⁵ / ₃₂	Red
CTL4002	400 kcmil	½	1 ¹¹ / ₃₂	3	½	1¾	4 ¹⁵ / ₁₆	1 ¹³ / ₃₂	⁵ / ₃₂	Blue
CTL5002	500 kcmil	½	1 ³ / ₈	3	½	1¾	5	1 ¹⁷ / ₃₂	⁷ / ₃₂	Brown
CTL6002-38	600 kcmil	³ / ₈	1 ¹⁷ / ₃₂	1 ²⁹ / ₃₂	³ / ₈	1¾	5 ¹ / ₈	1 ²³ / ₃₂	⁷ / ₃₂	Green
CTL6002-12	600 kcmil	½	1 ¹⁷ / ₃₂	3	½	1¾	5 ¹ / ₈	1 ²³ / ₃₂	⁷ / ₃₂	Green
CTL7502	750 kcmil	½	1½	3	½	1¾	5 ⁷ / ₃₂	1 ²⁹ / ₃₂	¹ / ₄	Black
CTL10002	1,000 kcmil	½	1¾	3	½	1¾	5 ⁷ / ₁₆	2¼	⁹ / ₃₂	-

Diagrams



See the Color-Keyed tools, dies and kits catalogue for more tool and die information.

Blackburn and ABB are registered trademarks of ABB Installation Products, Ltd.
All other trademarks are the property of their respective owners.

Color-coded compression connectors

Type CTL – Copper lugs, one-hole mount, long barrel



Copper compression connectors

- For use with copper conductors: AWG stranded, flexible cable, welding cable and portable cord
- Specially designed for industrial and building applications
- Made of high-conductivity seamless copper tubing
- Tin-plated for corrosion resistance
- Specially chamfered barrel for ease of installation
- Color-coded for matching die identification
- Can be used for medium voltage application up to 35 kV, provided proper insulation techniques are used

- CSA certified and UL listed for AWG conductors when installed with Blackburn, Burndy, ABB or Anderson tools, as specified by CSA
- Comply with Subpart 111.60-17 of Federal Register's Coast Guard Electrical Engineering Rules and Regulations

Long barrel connectors

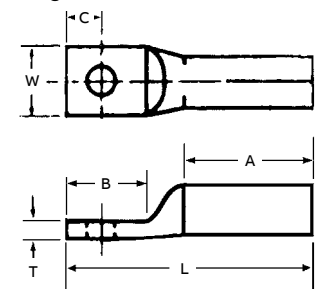
- Ideal for industrial, oil rig, mining, welding and transportation electrical termination applications
- Heavy-duty design which permits additional crimp for added mechanical strength

Type CTL – Copper lugs, one-hole mount, long barrel



Cat. no.	Conductor size (Cu)	Flexible conductor size	Stranded	Stud size (in.)	Dimensions (in.)						Color code
					A	B	C	L	W	T	
CTL8L-14	8 str.	¼	37/24	¼	25/32	5/8	¼	1-5/8	13/32	1/16	Red
CTL6L-14	6 str.	¼	61/24	¼	25/32	5/8	¼	1-5/8	13/32	1/16	Blue
CTL4L-14	4 str.	5/16	91/24	¼	25/32	5/8	¼	1 11/16	½	3/32	Gray
CTL2L-516	2 + 3 str.	5/16	125/24	5/16	7/8	7/8	3/8	2 1/2	9/16	3/32	Brown
CTL1L-516	1 str.	5/16	150/24	5/16	1 3/32	7/8	3/8	2 5/32	21/32	3/32	Green
CTL10L-516	1/0 str.	½	225/24	5/16	1 3/32	7/8	3/8	2 7/32	¾	1/8	Pink
CTL20L-38	2/0 str.	½	275/24	3/8	1 3/32	29/32	3/8	2 ¼	13/16	1/8	Black
CTL30L-12	3/0 str.	½	325/24	½	1 1/8	1 ¼	½	2 11/16	29/32	1/8	Orange
CTL40L-12	4/0 str.	½	–	½	1 3/8	1 ¼	½	2 15/16	1 1/32	1/8	Purple
CTL250L-12	250 kcmil	½	450/24	½	1 19/32	1 ¼	½	3 3/8	1 1/8	1/8	Yellow
CTL300L-12	300 kcmil	½	550/24	½	1 25/32	1 ¼	½	3 17/32	1 3/16	1/8	White
CTL350L-12	350 kcmil	½	650/24	½	1 27/32	1 ¼	5/8	3 19/32	1 11/32	5/32	Red
CTL400L-58	400 kcmil	5/8	775/24	5/8	1 27/32	1 9/16	5/8	4 1/32	1 13/32	5/32	Blue
CTL500L-58	500 kcmil	5/8	925/24	5/8	2 11/32	1 9/16	5/8	4 1/2	1 19/32	3/16	Brown
CTL600L-58	600 kcmil	5/8	1,100/24	5/8	2 1/8	1 9/16	5/8	4 5/16	1 23/32	7/32	Green
CTL750L-58	750 kcmil	5/8	1,325/24	5/8	2 3/8	1 9/16	5/8	4 21/32	1 29/32	¼	Black
CTL1000L-58	1,000 kcmil	5/8	1,600/24 1,925/24	5/8	2 7/8	1 9/16	5/8	5 3/32	2 ¼	3/32	–

Diagrams



See the Color-Keyed tools, dies and kits catalogue for more tool and die information.

Blackburn and ABB are registered trademarks of ABB Installation Products, Ltd. All other trademarks are the property of their respective owners.

Color-coded compression connectors

Type LCN – Copper lugs, two-hole mount, long barrel



Copper compression connectors

- For use with copper conductors: AWG stranded, flexible cable, welding cable and portable cord
- Specially designed for industrial and building applications
- Made of high-conductivity seamless copper tubing
- Tin-plated for corrosion resistance
- Specially chamfered barrel for ease of installation
- Color-coded for matching die identification
- Can be used for medium voltage application up to 35 kV, provided proper insulation techniques are used

- CSA certified and UL listed for AWG conductors when installed with Blackburn, Burndy, ABB or Anderson tools, as specified by CSA
- Comply with Subpart 111.60-17 of Federal Register's Coast Guard Electrical Engineering Rules and Regulations

Long barrel connectors

- Ideal for industrial, oil rig, mining, welding and transportation electrical termination applications
- Heavy-duty design which permits additional crimp for added mechanical strength

Type LCN – Copper lugs, two-hole mount, long barrel



Cat. no.	Conductor size (Cu)	Flexible conductor size	Stranded	Stud size (in.)	Dimensions (in.)							Color code
					A	B	C	D	L	W	T	
LCN8-14	8 str.	8	37/24	1/4	25/32	13/16	1/4	5/8	2 1/8	15/32	1/16	Red
LCN6-14	6 str.	6	61/24	1/4	25/32	1 1/4	1/4	5/8	1 1/4	13/32	1/16	Blue
LCN6-12	6 str.	6	61/24	1/2	25/32	3	1/2	1 3/4	4 3/32	7/8	3/32	Blue
LCN4-14	4 str.	5	91/24	1/4	25/32	1 3/16	1/4	5/8	2 3/16	17/32	3/16	Gray
LCN4-12	4 str.	5	91/24	1/2	25/32	3	1/2	1 3/4	4 3/32	7/8	3/32	Gray
LCN2-516	2 + 3 str.	3	125/24	5/16	7/8	1 5/8	3/8	3/4	2 15/16	9/16	3/32	Brown
LCN2-12	2 str.	3	125/24	1/2	7/8	3	1/2	1 3/4	4 1/4	7/8	3/32	Brown
LCN1-516	1 str.	2	150/24	5/16	1 1/32	1 5/8	3/8	7/8	2 31/32	21/32	3/32	Green
LCN1-12	1 str.	2	150/24	1/2	1 1/32	3	1/2	1 3/4	4 13/32	7/8	3/32	Green
LCN10	1/0 str.	1	225/24	1/2	1 1/32	3	1/2	1 3/4	3 31/32	3/4	1/8	Pink
LCN20	2/0 str.	1/0	275/24	1/2	1 5/16	3	1/2	1 3/4	4 3/16	13/16	1/8	Black
LCN30	3/0 str.	2/0	325/24	1/2	1 1/8	2 15/16	1/2	1 3/4	4 7/16	15/16	1/8	Orange
LCN40	4/0 str.	–	–	1/2	1 3/8	3	1/2	1 3/4	4 11/16	1 1/32	1/8	Purple
LCN250	250 kcmil	3/0	450/24	1/2	1 19/32	3	1/2	1 3/4	4 29/32	1 1/16	1/8	Yellow
LCN300	300 kcmil	4/0	550/24	1/2	1 25/32	3	1/2	1 3/4	5 9/32	1 3/16	1/8	White
LCN350	350 kcmil	263	650/24	1/2	1 27/32	3	1/2	1 3/4	5 11/32	1 11/32	5/32	Red
LCN400	400 kcmil	313	775/24	1/2	1 27/32	3	1/2	1 3/4	5 7/16	1 13/32	5/32	Blue
LCN500	500 kcmil	373	925/24	1/2	2 11/32	3	1/2	1 3/4	5 15/16	1 19/32	3/16	Brown
LCN600	600 kcmil	444	1,100/24	1/2	2 1/8	3	1/2	1 3/4	5 3/4	1 23/32	7/32	Green
LCN75	750 kcmil	535	1,325/24	1/2	2 3/8	3	1/2	1 3/4	6 3/32	1 29/32	1/4	Black
LCN99	1,000 kcmil	646 777	1,600/24 1,925/24	1/2	2 7/8	3	1/2	1 3/4	6 19/32	2 - 1/4	9/32	–

See the Color-Keyed tools, dies and kits catalogue for more tool and die information.

Blackburn and ABB are registered trademarks of ABB Installation Products, Ltd.
All other trademarks are the property of their respective owners.

Color-coded compression connectors

Type CSP – Copper splices, short barrel



Copper compression connectors

- For use with copper conductors: AWG stranded, flexible cable, welding cable and portable cord
- Specially designed for industrial and building applications
- Made of high-conductivity seamless copper tubing
- Tin-plated for corrosion resistance
- Specially chamfered barrel for ease of installation
- Color-coded for matching die identification
- Can be used for medium voltage application up to 35 kV, provided proper insulation techniques are used

- CSA certified and UL listed for AWG conductors when installed with Blackburn, Burndy, ABB or Anderson tools, as specified by CSA
- Comply with Subpart 111.60-17 of Federal Register’s Coast Guard Electrical Engineering Rules and Regulations

Short barrel connectors

- Short barrel connectors designed for regular-duty applications
- Ideal for confined areas

Type CSP – Copper splices, short barrel



Cat. no.	Conductor size (Cu)	Length (in.)	Color code
CSP8	8 str.	1	Red
CSP6	6 str.	1	Blue
CSP4	4 str.	1	Gray
CSP2	2 + 3 str.	1¼	Brown
CSP1	1 str.	1½	Green
CSP10	1/0 str.	1⅝	Pink
CSP20	2/0 str.	1¾	Black
CSP30	3/0 str.	1¾	Orange
CSP40	4/0 str.	1⅞	Purple
CSP250	250 kcmil	2¼	Yellow
CSP300	300 kcmil	1⅞	White
CSP350	350 kcmil	2¼	Red
CSP400	400 kcmil	2¾	Blue
CSP500	500 kcmil	2¾	Brown
CSP600	600 kcmil	3	Green
CSP750	750 kcmil	3	Black
CSP1000	1,000 kcmil	3⅝	

See the Color-Keyed tools, dies and kits catalogue for more tool and die information.

Blackburn and ABB are registered trademarks of ABB Installation Products, Ltd.
All other trademarks are the property of their respective owners.

Color-coded compression connectors

Type CU – Copper splices, long barrel



Copper Compression Connectors

- For use with copper conductors: AWG stranded, flexible cable, welding cable and portable cord
- Specially designed for industrial and building applications
- Made of high-conductivity seamless copper tubing
- Tin-plated for corrosion resistance
- Specially chamfered barrel for ease of installation
- Color-coded for matching die identification
- Can be used for medium voltage application up to 35 kV, provided proper insulation techniques are used

- CSA certified and UL listed for AWG conductors when installed with Blackburn, Burndy, ABB or Anderson tools, as specified by CSA
- Comply with Subpart 111.60-17 of Federal Register's Coast Guard Electrical Engineering Rules and Regulations

Long Barrel Connectors

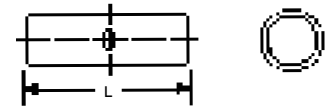
- Ideal for industrial, oil rig, mining, welding and transportation electrical termination applications
- Heavy-duty design which permits additional crimp for added mechanical strength

Type CU – Copper splices, long barrel



Cat. no.	Conductor size (Cu)	Flexible conductor		Stud size (in.)	Length (in.)	Color code
		CMA	Stranded			
CU8	8 str.	8	37/24	¼	1¾	Red
CU6	6 str.	6	61/24	¼	1¾	Blue
CU4	4 str.	5	91/24	¼	1¾	Gray
CU2	2 + 3 str.	3	125/24	¼ ₁₆	1 ¹ / ₈	Brown
CU1	1 str.	2	150/24	¼ ₁₆	2	Green
CU10	1/0 str.	1	225/24	¼ ₁₆	2	Pink
CU20	2/0 str.	1/2	275/24	¾ ₈	2 ¹ / ₈	Black
CU30	3/0 str.	2/0	325/24	½	2¼	Orange
CU40	4/0 str.	–	–	½	2¾	Purple
CU250	250 kcmil	3/0	450/24	½	3¾	Yellow
CU300	300 kcmil	4/0	550/24	½	3½	White
CU350	350 kcmil	263	650/24	½	3¾	Red
CU400	400 kcmil	313	775/24	⅝	3¾	Blue
CU500	500 kcmil	373	925/24	⅝	4¾	Brown
CU600	600 kcmil	444	1,100/24	⅝	4¼	Green
CU750	750 kcmil	535	1,325/24	⅝	4¾	Black
CU1000	1,000 kcmil	646 777	1,600/24 1,925/24	⅝	5¾	

Diagrams



See the Color-Keyed tools, dies and kits catalogue for more tool and die information.

Blackburn and ABB are registered trademarks of ABB Installation Products, Ltd.
All other trademarks are the property of their respective owners.

Color-coded compression connectors

Type ATL – Aluminum lugs, one-hole



Aluminum compression connectors

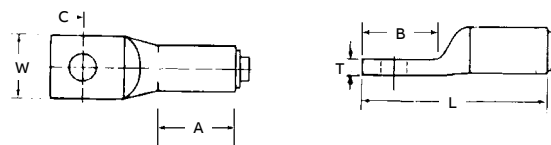
- Specifically designed for use with aluminum conductors (concentric, compressed or compact)
- Also listed for use with copper conductors
- Made of high-conductivity seamless aluminum tubing
- Tin-plated for corrosion resistance
- Chamfered barrels for ease of installation
- Can be used for medium voltage applications up to 35 kV, provided proper insulation techniques are used
- CSA certified and UL listed for AWG conductors when installed with Blackburn, Burndy, ABB or Anderson tools, as specified by CSA
- Color-coded for quick, easy die identification
- Pre-filled with oxide inhibiting compound

Type ATL – Aluminum lugs, one-hole



Cat. no.	Conductor size		Stud size (in.)	Dimensions (in.)				Color code		
	(Al)	(Cu)		A	B	C	L			
ATL8-10	8 str.	6 AWG	10	1/2	19/32	7/32	1 9/32	13/32	3/32	Blue
ATL8-14	8 str.	6 AWG	1/4	1/2	11/16	11/32	1 3/8	7/16	3/32	Blue
ATL6-10	6 str.	4 AWG	10	25/32	9/16	7/32	1 1/2	15/32	1/8	Gray
ATL6-14	6 str.	4 AWG	1/4	25/32	23/32	15/32	1 21/32	15/32	1/8	Gray
ATL6-38	6 str.	4 AWG	3/8	27/32	29/32	7/16	1 27/32	5/8	3/32	Gray
ATL4-14	4 str.	1 AWG	1/4	27/32	13/16	11/32	1 29/32	5/8	3/16	Green
ATL4-516	4 str.	1 AWG	5/16	27/32	1	7/16	2 1/16	5/8	3/16	Green
ATL4-38	4 str.	1 AWG	3/8	27/32	29/32	7/16	2	5/8	3/16	Green
ATL2-14	2 + 3 str.	1/0 AWG	1/4	27/32	25/32	11/32	1 15/16	23/32	3/16	Pink
ATL2-516	2 + 3 str.	1/0 AWG	5/16	27/32	7/8	7/16	2 11/32	3/4	3/16	Pink
ATL2-38	2 + 3 str.	1/0 AWG	3/5	27/32	29/32	7/16	2 1/16	23/32	3/16	Pink
ATL1-516	1 str.	-	5/16	27/32	7/8	7/16	2 1/32	23/32	3/16	Gold
ATL1-38	1 str.	-	3/8	27/32	29/32	7/16	2 3/8	3/4	3/16	Gold
ATL10-516	1/0 str.	-	5/16	1 5/32	1	7/16	2 17/32	7/8	3/16	Tan
ATL10-38	1/0 str.	-	3/8	1 5/32	1 1/16	7/16	2 19/32	7/8	3/16	Tan
ATL10-12	1/0 str.	-	1/2	1 5/32	1 3/8	11/16	2 15/16	15/16	3/16	Tan
ATL20-38	2/0 str.	-	3/8	1 3/16	1	7/16	2 5/8	31/32	7/32	Olive
ATL20-12	2/0 str.	-	1/2	1 3/16	1 3/8	11/16	3	1 1/32	7/32	Olive
ATL30-38	3/0 str.	-	3/8	1 11/32	1 1/2	7/16	2 13/16	1 1/16	7/32	Ruby
ATL30-12	3/0 str.	-	1/5	1 11/32	1 3/8	11/16	3 3/8	1 1/16	7/32	Ruby
ATL40-38	4/0 str.	300 kcmil	3/8	1 7/8	1 3/2	3/8	3 3/4	1 3/16	1/4	White
ATL40-12	4/0 str.	300 kcmil	1/2	1 7/8	1 1/4	1/2	3 7/8	1 3/16	1/4	White
ATL250-12	250 kcmil	350 kcmil	1/2	2 1/32	1 1/4	1/2	4 1/32	1 9/32	1/4	Red
ATL300-38	300 kcmil	400 kcmil	3/8	2	1 5/16	3/8	4 3/16	1 3/8	9/32	Blue
ATL300-12	300 kcmil	400 kcmil	1/2	2	1 5/16	1/2	4 3/16	1 3/8	9/32	Blue
ATL350-12	350 kcmil	500 kcmil	1/2	2 11/16	1 5/16	1/2	4 7/8	1 1/2	3/16	Brown
ATL400-58	400 kcmil	600 kcmil	5/8	2 11/16	1 1/4	1/2	4 15/16	1 5/8	3/8	Green
ATL500-12	500 kcmil	700 kcmil	1/2	2 11/16	1 1/4	1/2	4 15/16	1 25/32	3/8	Pink
ATL500-58	500 kcmil		5/8	2 11/16	2	3/4	5 11/16	1 25/32	3/8	Pink
ATL600-12	-	600 kcmil	1/2	2 11/16	2	3/4	5 13/16	1 29/32	11/32	Black
ATL750-12	750 kcmil	900 kcmil	1/2	2 7/8	1 1/4	1/2	5 1/4	2 1/8	3/8	-
ATL750-58	750 kcmil	900 kcmil	5/8	2 7/8	2	3/4	6 1/32	2 1/8	3/8	-

Diagrams



Color-coded compression connectors

Type ATL – Aluminum lugs, two-hole



Aluminum compression connectors

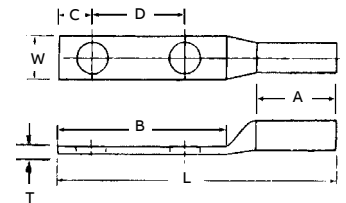
- Specifically designed for use with aluminum conductors (concentric, compressed or compact)
 - Also listed for use with copper conductors
 - Made of high-conductivity seamless aluminum tubing
 - Tin-plated for corrosion resistance
 - Chamfered barrels for ease of installation
- Can be used for medium voltage applications up to 35 kV, provided proper insulation techniques are used
 - Color-coded for quick, easy die identification
 - Pre-filled with oxide inhibiting compound
 - CSA certified and UL listed for AWG conductors when installed with Blackburn, Burndy, ABB or Anderson tools, as specified by CSA

Type ATL – Aluminum lugs, two-hole



Cat. no.	Conductor size		Stud size (in.)	Dimensions (in.)							Color code
	(Al)	(Cu)		A	B	C	D	L	W	T	
ATL102-38	1/0 str.	–	3/8	1 5/32	2 1/16	3/8	1	3 19/32	7/8	3/16	Tan
ATL102	1/0 str.	–	1/2	1 3/16	3	1/2	1 3/4	4 9/16	1 5/16	3/16	
ATL202	2/0 str.	–	1/2	1 3/16	3 3/8	3/4	1 3/4	5	3 1/32	7/32	Olive
ATL302	3/0 str.	–	1/2	1 11/32	3 3/8	3/4	1 3/4	5 5/32	1 1/16	7/32	Ruby
ATL402	4/0 str.	300 kcmil	1/2	1 7/8	3	1/2	1 3/4	5 5/8	1 3/16	1/4	White
ATL2502	250 kcmil	350 kcmil	1/2	2 1/32	3	1/2	1 3/4	5 25/32	1 9/32	1/4	Red
ATL3002	300 kcmil	400 kcmil	1/2	2	3	1/2	1 3/4	5 7/8	1 3/8	9/32	Blue
ATL3502	350 kcmil	500 kcmil	1/2	2 11/16	3	1/2	1 3/4	6 9/16	1 1/2	5/16	Brown
ATL4002	400 kcmil	600 kcmil	1/2	2 11/16	3	1/2	1 3/4	6 11/16	1 5/8	3/8	Green
ATL5002	500 kcmil	700 kcmil	1/2	2 11/16	3	1/2	1 3/4	6 11/16	1 25/32	3/8	Pink
ATL6002	–	600 kcmil	1/2	2 11/16	3	1/2	1 3/4	6 13/16	1 29/32	11/32	Black
ATL7502	750 kcmil	900 kcmil	1/2	2 7/8	3	1/2	1 3/4	7 - 1/8	2 1/8	3/8	–

Diagrams



See the Color-Keyed tools, dies and kits catalogue for more tool and die information.

Color-coded compression connectors

Type ASP – Aluminum splices



Aluminum compression connectors

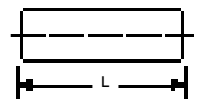
- Specifically designed for use with aluminum conductors (concentric, compressed or compact)
- Also listed for use with copper conductors
- Made of high-conductivity seamless aluminum tubing
- Tin-plated for corrosion resistance
- Chamfered barrels for ease of installation
- Can be used for medium voltage applications up to 35 kV, provided proper insulation techniques are used
- Color-coded for quick, easy die identification
- Pre-filled with oxide inhibiting compound
- CSA certified and UL listed when installed with Blackburn, Burndy, ABB or Anderson tools, as specified by CSA

Type ASP – Aluminum splices



Cat. no.	Conductor size		Length (in.)	Color code
	(Al)	(Cu)		
ASP8	8 str.	6 AWG	1¼	Blue
ASP6	6 str.	4 AWG	1½	Gray
ASP4	4 str.	1 AWG	1¾	Green
ASP2	2 + 3 str.	1/0 AWG	1¾	Pink
ASP1	1 str.	–	2¾	Gold
ASP10	1/0 str.	–	2¾	Tan
ASP20	2/0 str.	–	2½	Olive
ASP30	3/0 str.	–	2¾	Ruby
ASP40	4/0 str.	300 kcmil	3¾	White
ASP250	250 kcmil	350 kcmil	4	Red
ASP300	300 kcmil	400 kcmil	4	Blue
ASP350	350 kcmil	500 kcmil	3¾	Brown
ASP400	400 kcmil	600 kcmil	4¾	Green
ASP500	500 kcmil	700 kcmil	5	Pink
ASP600	–	600 kcmil	5¾	Black
ASP750	750 kcmil	900 kcmil	5¾	
ASP1000	1,000 kcmil	–	6	

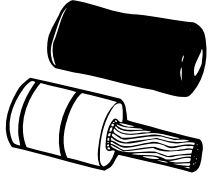
Diagram



See the Color-Keyed tools, dies and kits catalogue for more tool and die information.

Color-coded compression connectors

Type PA – Pin adapter terminals



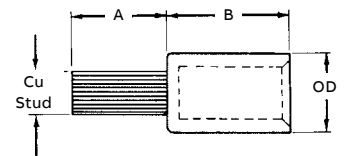
- Connector for aluminum conductors only; pigtail may be inserted into either aluminum or copper connectors
- Insulating cover included
- 90°C rating per UL standard
- Tin-plated stranded copper wire pigtail
- Tin-plated aluminum barrel pre-filled with oxide inhibitor and capped

Type PA – Pin adapter terminals



Cat. no.	Conductor size (Al)	Copper stud size	Dimensions (in.)			Color code	Die #
			A	B	O.D.		
PA06	6 str.	8	$\frac{7}{8}$	$1\frac{11}{32}$	0.640	Orange	50
PA04	4 str.	6	$\frac{7}{8}$	$1\frac{11}{32}$	0.640		50
PA02	2 str.	4	$\frac{7}{8}$	$1\frac{11}{32}$	0.640		50
PA01	1 str.	3	1	$1\frac{11}{32}$	0.640		50
PA11	1/0 str.	2	$1\frac{1}{4}$	$1\frac{19}{32}$	0.906	Red	76
PA21	2/0 str.	1	$1\frac{1}{4}$	$1\frac{19}{32}$	0.906		76
PA31	3/0 str.	1/0	$1\frac{3}{8}$	$1\frac{7}{8}$	0.906		76
PA41	4/0 str.	2/0	$1\frac{3}{8}$	$1\frac{7}{8}$	0.906		76
PA25	250 kcmil	3/0	$1\frac{1}{2}$	$2\frac{1}{16}$	1.155	Brown	87H
PA30	300 kcmil	4/0	$1\frac{5}{8}$	$2\frac{1}{16}$	1.155		87H
PA35	350 kcmil	4/0	$1\frac{5}{8}$	$2\frac{1}{16}$	1.155		87H
PA40	400 kcmil	250 kcmil	$1\frac{7}{8}$	$2\frac{3}{32}$	1.375	Black	106H
PA50	500 kcmil	350 kcmil	$1\frac{7}{8}$	$2\frac{3}{32}$	1.375		106H
PA60	600 kcmil	350 kcmil	$1\frac{7}{8}$	$2\frac{3}{4}$	1.500	Yellow	115H
PA75	750 kcmil	500 kcmil	2	$2\frac{3}{4}$	1.500		115H

Diagram



UL listed.
CSA not applicable.

Alum. wire size	Die code	ABB dies							
		UT3	UT5	TBM5	TBM6	TBM8	13642 12-ton	TBM15 UT15	21920 20-ton
#6 – #1	50	5/8	TU	Orange	–	–	–	15529	–
1/0 – 4/0	76 or 76H	–	TX	–	13472 Red 13476 Red	13467	11744	15512	11170
250 kcmil – 350 kcmil	87H	–	TH	–	–	13468	11746	15506	11176
400 kcmil – 500 kcmil	106H	–	–	–	–	–	11749	15515	11140
600 kcmil – 750 kcmil	115H	–	–	–	–	–	11753	15504	11157

Color-coded compression connectors

Type OAPA – Offset pin style and type APA center pin style



Optimum design to allow a reliable termination of aluminum or copper

- Easily transition large aluminum cables into mechanical lugs
- Simplify installations in tight working spaces
- Knurled pins provide a solid contact area to ensure low-resistance connection
- Manufactured from high-conductivity aluminum alloy
- Tin plated to eliminate the possibility of galvanic corrosion
- Pre-filled with oxide inhibitor to ensure airtight termination
- Kitted with an insulating boot to eliminate taping

Material: High-conductivity aluminum alloy

Plating: Electro-tin plated

Insulating boot: EPDM rubber except APA-1000 and OAPA-1000 boot are PVC

Type OAPA – Offset pin style and type APA center pin style



Cat. no. Center pin style	Cat. no. Offset pin style	Wire size	A Overall length (in.)	B Pin length (in.)	C Pin dia. (in.)	D Barrell dia. (in.)	E Boot length (in.)	F Boot dia. (in.)	Die/Color code
APA-6	-	#6 AWG	1.85	0.68	0.24	0.60	3.06	0.81	50/Tan
APA-4	-	#4 AWG	1.85	0.68	0.24	0.60	3.06	0.81	
APA-2	-	#2 AWG	1.85	0.68	0.24	0.60	3.06	0.81	
APA-1	-	#1 AWG	2.01	0.84	0.26	0.60	3.06	0.81	
APA-1/0	-	1/0 AWG	2.21	0.84	0.29	0.85	3.22	1.08	66/White
APA-2/0	OAPA-2/0	2/0 AWG	2.21	0.84	0.33	0.85	3.22	1.08	
APA-3/0	OAPA-3/0	3/0 AWG	2.59	1.22	0.37	0.85	3.22	1.08	
APA-4/0	OAPA-4/0	4/0 AWG	2.59	1.22	0.42	0.85	3.22	1.08	
APA-250	OAPA-250	250 kcmil	2.63	1.22	0.47	1.10	3.50	1.30	87/Brown
APA-300	OAPA-300	300 kcmil	2.75	1.34	0.53	1.10	3.50	1.30	
APA-350	OAPA-350	350 kcmil	2.75	1.34	0.57	1.10	3.50	1.30	
APA-400	OAPA-400	400 kcmil	3.63	1.60	0.68	1.32	3.75	1.47	99/Pink
APA-500	OAPA-500	500 kcmil	3.63	1.60	0.68	1.32	3.75	1.47	
APA-600	OAPA-600	600 kcmil	3.67	1.64	0.73	1.46	4.06	1.72	115/Yellow
APA-750	OAPA-750	750 kcmil	3.79	1.76	0.81	1.46	4.06	1.72	
APA-1000	OAPA-1000	1,000 kcmil	4.03	2.00	0.90	1.70	3.33	2.04	140/-

Diagrams

