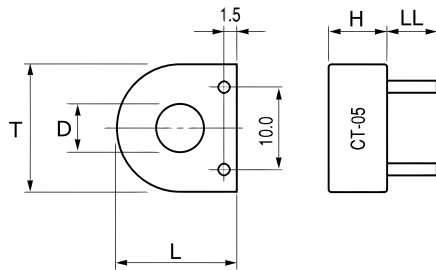


KEMET Part Number: CT-05
(USEN0500000000)

KEMET, CT, Current, Round - Toroidal, AC, Overcurrent/Current Detection, High Sensitivity, High Performance



General Information	
Series:	CT
Type:	Current
Style:	Round - Toroidal
Description:	Low Alternating Current Sensor
Features:	Overcurrent/Current Detection, High Sensitivity, High Performance
Lead:	Wire Leads
RoHS:	Yes
Notes:	0.6 mm Diameter Pin Connectors

Dimensions	
D	5.5mm NOM
L	17.5mm +/-0.4mm
H	10mm NOM
T	17.5mm +/-0.4mm
LL	10mm +/-0.1mm

Specifications	
Temperature Range:	-20/+80°C
Miscellaneous:	Materials = Phenolic Resin Case, Epoxy-Filled. 500 turns.

Packaging Specifications	
Packaging:	Tray
Packaging Quantity:	1200
Component Weight:	4.4 g

Statements of suitability for certain applications are based on our knowledge of typical operating conditions for such applications, but are not intended to constitute - and we specifically disclaim - any warranty concerning suitability for a specific customer application or use. This Information is intended for use only by customers who have the requisite experience and capability to determine the correct products for their application. Any technical advice inferred from this Information or otherwise provided by us with reference to the use of our products is given gratis, and we assume no obligation or liability for the advice given or results obtained.