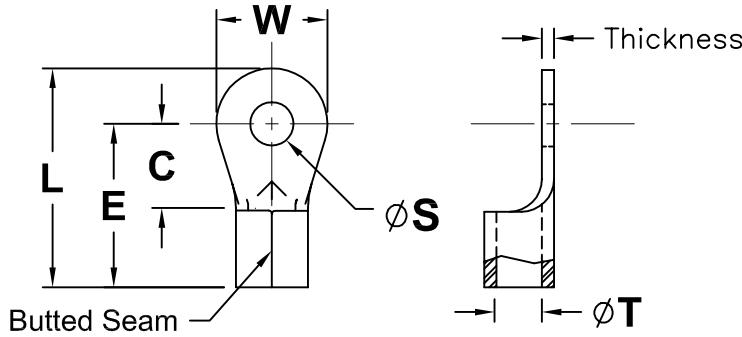


DCP #	REV	DESCRIPTION	DRAWN	DATE	CHECKD	DATE	APPRVD	DATE
1116	B	Drawing was CRS-TO-****	JWM	6/13/01	JC	6/20/01	JC	6/20/01
1369	C	Bulk items added	JWM	12/10/02	JC	2/19/02	JC	2/19/03



- NOTES:
 1. Electro-plated Copper
 2. Voltage Rating: 600V

SPC Type No.	Pkg. Qty	Wire Range (AWG)	Stud Size	L	W	E	C	S	T	Thickness						
CRS-TO-1006	50	12 ~ 10	6	.68	.28	.54	.29	.143	.135	.040						
SPC3731	500		8	.68	.28	.54	.29	.174								
CRS-TO-1008	50		10	.73	.38	.54	.29	.200								
SPC3732	500		1/4	.96	.53	.69	.44	.264								
CRS-TO-1010	50		5/16	.96	.53	.69	.44	.328								
SPC3733	500		3/8	.96	.54	.69	.44	.390								
CRS-TO-1025	50		16 ~ 14	6	.60	.25	.47	.22			.148	.090				
SPC3734	500			8	.74	.31	.58	.33			.174					
CRS-TO-1031	50			10	.74	.31	.58	.33			.200					
SPC3735	500			1/4	.89	.47	.65	.40			.265					
CRS-TO-1037	50	22 ~ 18		2	.60	.25	.47	.22	.144	.070						
SPC3736	500			4	.60	.25	.47	.22	.118							
CRS-TO-1406	100			6	.60	.25	.47	.22	.144							
SPC3727	1000			8	.74	.31	.58	.33	.174							
CRS-TO-1408	100			10	.74	.31	.58	.33	.195							
SPC3728	1000			1/4	.88	.47	.65	.40	.265							
CRS-TO-1410	100		26 ~ 24	0	.32	.14	.24	.11	.060			.030	.020			
SPC3729	1000			2	.31	.14	.24	.11	.090							
CRS-TO-1425	100			4	.45	.20	.35	.21	.116							
SPC3730	1000			6	.45	.20	.35	.21	.143							
CRS-TO-1802	100	22 ~ 18		2	.60	.25	.47	.22	.144	.070						
SPC3721	1000			4	.60	.25	.47	.22	.118							
CRS-TO-1804	100			6	.60	.25	.47	.22	.144							
SPC3722	1000			8	.74	.31	.58	.33	.174							
CRS-TO-1806	100			10	.74	.31	.58	.33	.195							
SPC3723	1000			1/4	.88	.47	.65	.40	.265							
CRS-TO-1808	100		26 ~ 24	0	.32	.14	.24	.11	.060			.030	.020			
SPC3724	1000			2	.31	.14	.24	.11	.090							
CRS-TO-1810	100			4	.45	.20	.35	.21	.116							
SPC3725	1000			6	.45	.20	.35	.21	.143							
CRS-TO-1825	100	26 ~ 24		0	.32	.14	.24	.11	.060	.030	.020					
SPC3726	1000			2	.31	.14	.24	.11	.090							
CRS-TO-2200	100			4	.45	.20	.35	.21	.116							
SPC3717	1000			6	.45	.20	.35	.21	.143							
CRS-TO-2202	100			26 ~ 24	0	.32	.14	.24	.11					.060	.030	.020
SPC3718	1000				2	.31	.14	.24	.11					.090		
CRS-TO-2204	100		4		.45	.20	.35	.21	.116							
SPC3719	1000		6		.45	.20	.35	.21	.143							
CRS-TO-2206	100		26 ~ 24		0	.32	.14	.24	.11			.060	.030	.020		
SPC3720	1000				2	.31	.14	.24	.11			.090				

SPC-F004.DWG

TOLERANCES: UNLESS OTHERWISE SPECIFIED, DIMENSIONS ARE FOR REFERENCE PURPOSES ONLY.	DRAWN BY:	DATE:	DRAWING TITLE:			
	JC	3/1/91	Non-Insulated Ring Tongue Terminals			
	CHECKED BY:	DATE:	SIZE	DWG. NO.	ELECTRONIC FILE	REV
	JOHN COLE	11/21/91	A	TA-354	TA-354.dwg	C
	APPROVED BY:	DATE:	SCALE: NTS		U.O.M.: INCHES [mm]	SHEET: 1 OF 1
Jliska	11/21/91					