

Ring cable lug - C-RCI 2,5/M3,5 - 3240022

Please be informed that the data shown in this PDF Document is generated from our Online Catalog. Please find the complete data in the user's documentation. Our General Terms of Use for Downloads are valid (<http://phoenixcontact.com/download>)




Ring cable lug, blue, 1.5 ... 2.5 mm², M3.5

Why buy this product

- The insulated ring cable lugs with plastic sleeve are hard-soldered and feature the 'EASY ENTRY' system
- The sleeves are conically tapered to facilitate easy and correct insertion of the conductor

Key Commercial Data

| | |
|--------------|---|
| Packing unit | 100 STK |
| GTIN |  4 046356 451994 |

Technical data

Dimensions

| | |
|---|---------|
| Length (b) | 20.6 mm |
| Width (a) | 6.6 mm |
| Maximum stripping length | 8 mm |
| Length of insulation sleeve (c) | 11 mm |
| Inner dimension of the insulating collar (d) | 4.5 mm |
| Distance between the center and the insulation sleeve (e) | 6.3 mm |
| Inner diameter (f) | 3.7 mm |
| Material thickness (g) | 0.8 mm |

Ambient conditions

| | |
|---|---|
| Ambient temperature (operation) | -20 °C ... 105 °C |
| Ambient temperature (assembly) | -20 °C ... 100 °C |
| Optimum ambient temperature (storage/transport) | 20 °C 50 % Humidity (RH), store inside sealed original packaging. Avoid direct sunlight and heat. |
| Short-term temperature | 100 °C |

General

| | |
|------------------|--------------|
| Color | blue |
| Stripping length | 8 mm |
| Components | Halogen-free |

Ring cable lug - C-RCI 2,5/M3,5 - 3240022

Technical data

General

| | |
|--|------------|
| Flammability rating according to UL 94 | V2 |
| Material | Copper |
| Insulating material | PA |
| Coating | Tin-plated |

Standards and Regulations

| | |
|--|----|
| Flammability rating according to UL 94 | V2 |
|--|----|

Classifications

eCl@ss

| | |
|------------|----------|
| eCl@ss 4.0 | 27060701 |
| eCl@ss 4.1 | 27060701 |
| eCl@ss 5.0 | 27400201 |
| eCl@ss 5.1 | 27400201 |
| eCl@ss 6.0 | 27400201 |
| eCl@ss 7.0 | 27400201 |
| eCl@ss 8.0 | 27400204 |

ETIM

| | |
|----------|----------|
| ETIM 2.0 | EC000005 |
| ETIM 3.0 | EC000005 |
| ETIM 4.0 | EC001052 |
| ETIM 5.0 | EC001052 |

UNSPSC

| | |
|---------------|----------|
| UNSPSC 6.01 | 27113201 |
| UNSPSC 7.0901 | 27121703 |
| UNSPSC 11 | 27121703 |
| UNSPSC 12.01 | 27121703 |
| UNSPSC 13.2 | 27121703 |

Approvals

Approvals

Approvals

EAC / EAC

Ex Approvals

Ring cable lug - C-RCI 2,5/M3,5 - 3240022

Approvals

Approvals submitted

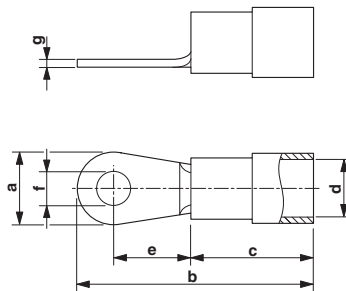
Approval details

EAC

EAC

Drawings

Dimensional drawing



Phoenix Contact 2016 © - all rights reserved
<http://www.phoenixcontact.com>

PHOENIX CONTACT GmbH & Co. KG
Flachsmarktstr. 8
32825 Blomberg
Germany
Tel. +49 5235 300
Fax +49 5235 3 41200
<http://www.phoenixcontact.com>