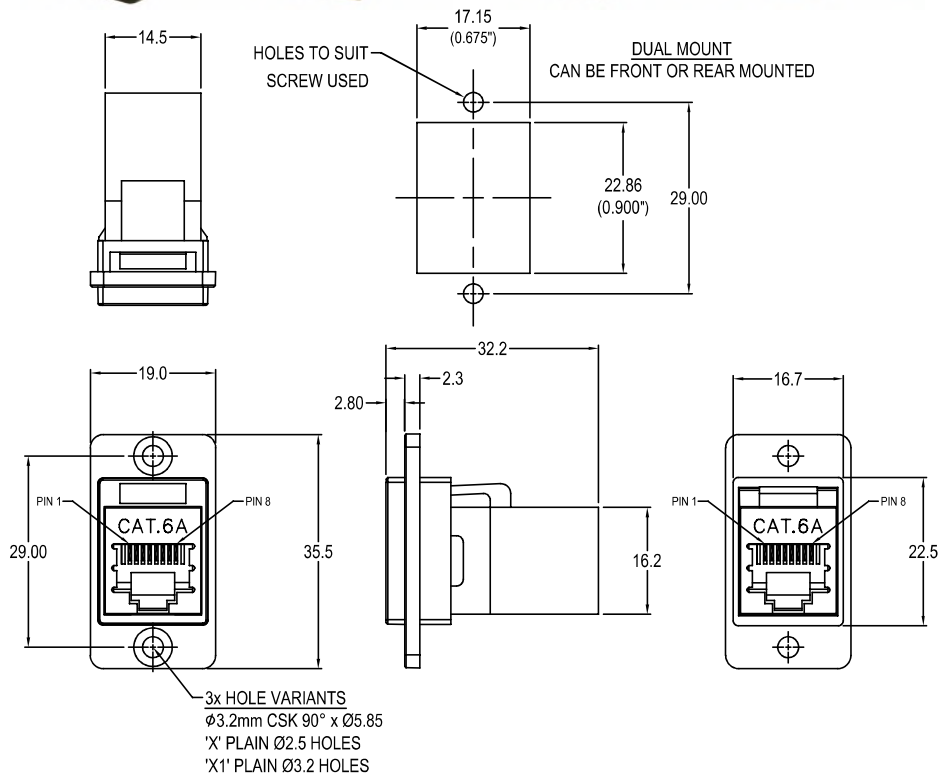


CLIFF

DUALSLIM CAT.6A SHIELDED RJ45 FEEDTHROUGH CONNECTOR

Can be front or rear mounted in the panel



Part No.

- CP30725S** DUALSLIM Cat.6A Shielded RJ45 Black plastic frame, CSK holes
- CP30725SX** DUALSLIM Cat.6A Shielded RJ45 Black plastic frame, Ø2.5 PLAIN holes
- CP30725SX1** DUALSLIM Cat.6A Shielded RJ45 Black plastic frame, Ø3.2 PLAIN holes

Feedthrough Features

- Fits standard rectangular cutout.
- Front or rear mounting through the panel.
- Various hole mounting options.
- No soldering or punch termination. Use standard cable for each connector style.
- Low rear profile.

General:

Please note: Functionality is affected by cable quality, length and cable wiring configuration.

Material:

- 1.RJ45 In-Line Coupler:
PC/ABS, UL 94V-0, Black colour
- 2.RJ45 In-Line Coupler Contact:
Phosphor Bronze, 3-50 micro inches gold plating over nickel plate.
- 3.PCB: FR4, UL 94V-0
- 4.Plastic Frame: Polyamide UL94 V-2

Performance:

- 1.T568A & T568B wiring.
- 2.Meet ISO/IEC 11801 and EN50173
- 3.Meet ANSI/TIA/EIA 568B.2
- 4.Operating temperature: Min -10°C Max +70°C