

# CLIFF

## METAL FEEDTHROUGH CONNECTORS FT Series

The Metal FT Series of true feed through connectors are perfect for developing custom I/O configurations for wall-plates, rack panels, etc. ALL fit within a standard XLR panel cutout, and use common cabling for front and back connections. No soldering, no punch terminations, just use the standard cable for that particular connector style. Mount from the front or back, low rear profile accommodates the tightest “behind the panel” spaces. Available in a wide variety of styles.

These frames are made from diecast metal with a nickel finish.



- | Part No.          | Description                                     |
|-------------------|-------------------------------------------------|
| <b>CP30200GM</b>  | HDMI A Female to HDMI A, Gold Plated, CSK hole. |
| <b>CP30200GM3</b> | HDMI A Female to HDMI A, Gold Plated, M3 hole.  |

- | Part No.         | Description                 |
|------------------|-----------------------------|
| <b>CP30202M</b>  | Mini Displayport, CSK hole. |
| <b>CP30202M3</b> | Mini Displayport, M3 hole.  |

- | Part No.          | Description                                      |
|-------------------|--------------------------------------------------|
| <b>CP30203NM</b>  | USB 2.0 B to USB 2.0 B, Nickel Plated, CSK hole. |
| <b>CP30203NM3</b> | USB 2.0 B to USB 2.0 B, Nickel Plated, M3 hole.  |

- | Part No.          | Description                                      |
|-------------------|--------------------------------------------------|
| <b>CP30204NM</b>  | USB 3.0 B to USB 3.0 B, Nickel Plated, CSK hole. |
| <b>CP30204NM3</b> | USB 3.0 B to USB 3.0 B, Nickel Plated, M3 hole.  |



**Part No. Description**  
**CP30205NM** USB 3.0 A to USB 3.0 A, Nickel Plated, CSK hole.  
**CP30205NM3** USB 3.0 A to USB 3.0 A, Nickel Plated, M3 hole.



**Part No. Description**  
**CP30206NM** USB 3.0 B to USB 3.0 A, Nickel Plated, CSK hole.  
**CP30206NM3** USB 3.0 B to USB 3.0 A, Nickel Plated, M3 hole.



**Part No. Description**  
**CP30207NM** USB 2.0 B to USB 2.0 A, Nickel Plated, CSK hole.  
**CP30207NM3** USB 2.0 B to USB 2.0 A, Nickel Plated, M3 hole.



**Part No. Description**  
**CP30208NM** USB 2.0 A to USB 2.0 A, Nickel Plated, CSK hole.  
**CP30208NM3** USB 2.0 A to USB 2.0 A, Nickel Plated, M3 hole.



**Part No. Description**  
**CP30209NM** USB 2.0 A to USB 2.0 B, Nickel Plated, CSK hole.  
**CP30209NM3** USB 2.0 A to USB 2.0 B, Nickel Plated, M3 hole.



**Part No. Description**  
**CP30210NM** USB 3.0 A to USB 3.0 B, Nickel Plated, CSK hole.  
**CP30210NM3** USB 3.0 A to USB 3.0 B, Nickel Plated, M3 hole.



**Part No. Description**  
**CP30211M** USB C Female to Male, Nickel Plated, CSK hole.  
**CP30211M3** USB C Female to Male, Nickel Plated, M3 hole.



**Part No. Description**  
**CP30212M** Dual USB C Female to Male, Nickel Plated, CSK hole.  
**CP30212M3** Dual USB C Female to Male, Nickel Plated, M3 hole.



**Part No.**  
**CP30213M**  
**CP30213M3**

**Description**  
 LC Duplex SM adaptor, Nickel Plated, CSK Hole  
 LC Duplex SM adaptor, Nickel Plated, M3 Hole



**Part No.**  
**CP30214M**  
**CP30214M3**

**Description**  
 LC Duplex MM, Nickel Plated, CSK Hole  
 LC Duplex MM, Nickel Plated, M3 Hole



**Part No.**  
**CP30215M**  
**CP30215M3**

**Description**  
 SC Simplex SM, Nickel Plated, CSK Hole  
 SC Simplex SM, Nickel Plated, M3 Hole



**Part No.**  
**CP30216M**  
**CP30216M3**

**Description**  
 SC Simplex MM, Nickel Plated, CSK Hole  
 SC Simplex MM, Nickel Plated, M3 Hole



**Part No.**  
**CP30217M**  
**CP30217M3**

**Description**  
 Toslink, CSK Hole  
 Toslink, M3 Hole



**Part No.**  
**CP30218M**  
**CP30218M3**

**Description**  
 ST Fibre, CSK Hole  
 ST Fibre, M3 Hole



**Part No.**  
**CP30219M**  
**CP30219M3**

**Description**  
 FC Fibre, CSK Hole  
 FC Fibre, M3 Hole



**Part No.**  
**CP30220M**  
**CP30220M3**

**Description**  
 UTP Cat5e RJ45-RJ45, CSK Hole  
 UTP Cat5e RJ45-RJ45, M3 Hole

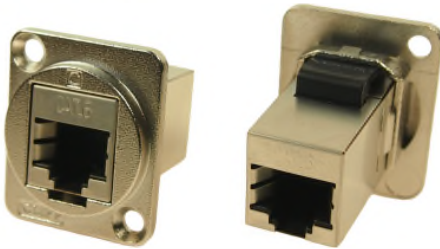




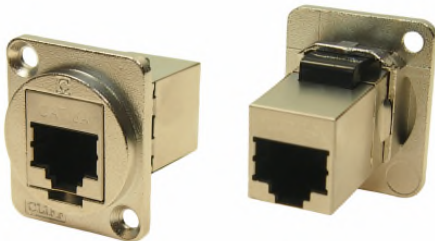
**Part No. Description**  
**CP30220SM** FTP Cat5e RJ45-RJ45, Shielded, CSK Hole  
**CP30220SM3** FTP Cat5e RJ45-RJ45, Shielded, M3 Hole



**Part No. Description**  
**CP30222M** UTP Cat6 RJ45-RJ45, CSK Hole  
**CP30222M3** UTP Cat6 RJ45-RJ45, M3 Hole



**Part No. Description**  
**CP30222SM** FTP Cat6 RJ45-RJ45, Shielded, CSK Hole  
**CP30222SM3** FTP Cat6 RJ45-RJ45, Shielded, M3 Hole



**Part No. Description**  
**CP30225SM** FTP Cat6A RJ45-RJ45, Shielded, CSK Hole  
**CP30225SM3** FTP Cat6A RJ45-RJ45, Shielded, M3 Hole



**Part No. Description**  
**CP30229M** 15 pin VGA Female - Female, Front mounting only



**Part No. Description**  
**CP30230M** RCA Phono RED, CSK Hole  
**CP30230M3** RCA Phono RED, M3 Hole



**Part No. Description**  
**CP30231M** RCA Phono WHITE, CSK Hole  
**CP30231M3** RCA Phono WHITE, M3 Hole



**Part No. Description**  
**CP30232M** RCA Phono YELLOW, CSK Hole  
**CP30232M3** RCA Phono YELLOW, M3 Hole  
 Other colours available on request.



**Part No.**  
**CP30241M**  
**CP30241M3**

**Description**  
 Blanking Plate, CSK Hole  
 Blanking Plate, M3 Hole



**Part No.**  
**CP30110**

**Description**  
 XLR USB A Female to USB B Female, CSK Hole



**Part No.**  
**CP30111**

**Description**  
 XLR USB B Female to USB A Female, CSK Hole



**Part No.**  
**CP30116**

**Description**  
 XLR HDMI A-A, CSK Hole



**Part No.**  
**CP30117**

**Description**  
 XLR Firewire, CSK Hole



**Part No.** **Description**  
**CP30112** - Cover for models CP30110, CP30111, CP30116, CP30117 only.



**Part No.**  
**CP30118**

**Description**  
 XLR 50 OHM BNC, CSK Hole



**Part No.**  
**CP30119**

**Description**  
 XLR 75 OHM BNC, CSK Hole



**Part No.**  
**CP30123**

**Description**  
 XLR 50 OHM INSULATED BNC, CSK Hole



**Part No.**  
**CP30124**

**Description**  
XLR 75 OHM INSULATED BNC, CSK Hole



**Part No.**  
**CP303112GM**

**Description**  
12GHz Gold BNC 75 Ohm, CSK Hole

For further information, contact [sales@cliffuk.co.uk](mailto:sales@cliffuk.co.uk)

**Cliff Electronic Components Limited**

76 Holmethorpe Avenue, Holmethorpe Ind. Estate,  
Redhill, Surrey RH1 2PF U.K.

Tel: +44 (0)1737 771375 Fax: +44 (0)1737 766012



[www.cliffuk.co.uk](http://www.cliffuk.co.uk)