

Type CNR-01 PC Board Type Fuse Clip Standard Auto Blade Fuses



www.optifuse.com (619) 593-5050

Specifications:

Voltage Rating: 500V AC / 250V DC

Amperage Rating: See Chart

Body Material: See Chart

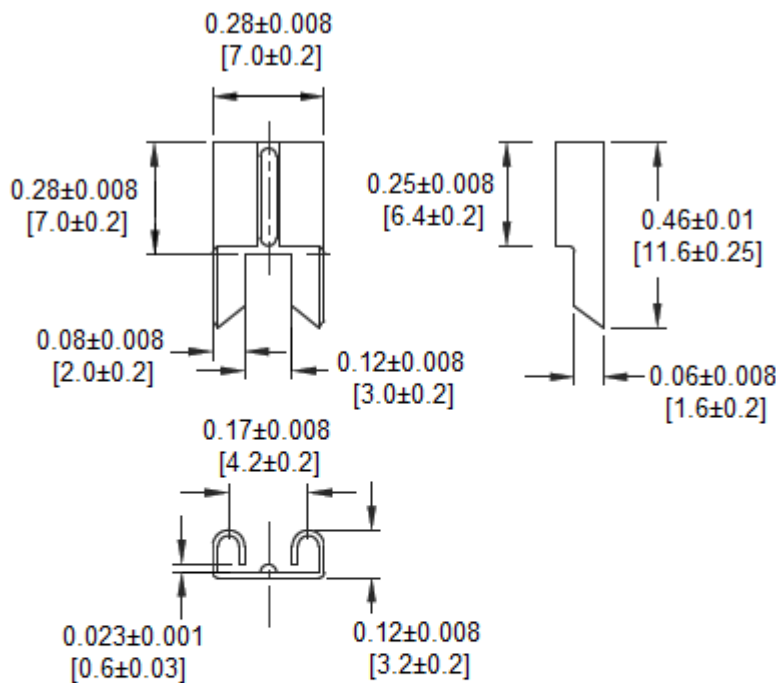
Finish: Bright Tin-plated

(For Matte Tin-plated add -CE at end of part number ...ie. CNR-01-PCU-CE)

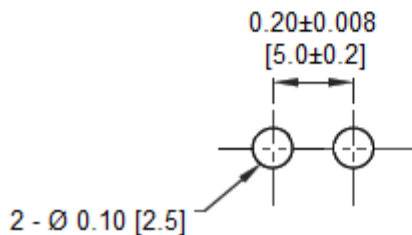
For use with Type APR Fuses (Standard-Automotive Blade Type)

Part number:	Material	Amperage Rating
CNR-01	Spring Bronze	15A Max.
CNR-01-PCU	Phosphor Bronze	20A Max.
CNR-01-BECU	Beryllium Bronze	30A Max.

Mechanical Dimensions: Inches [mm]



MOUNTING DETAILS



Warning:



-Operation beyond the specified maximum ratings or improper use may result in damage and possible electrical arcing and/or flame.

-Avoid contact of device with chemical solvent. Prolonged contact will damage the device performance.

Note: All specifications subject to change without notice.

Rev C 02/2014 - Page: 1/1
Code G02 - 01H